



3rd European Conference on Schizophrenia Research – Facts and Visions

Joint thematic congress of the Competence Network on Schizophrenia, the German Association for Psychiatry and Psychotherapy, and the European Psychiatric Association

29 September – 1 October 2011
Berlin, Germany

in cooperation with



WPA World Psychiatric Association
and its Section on Schizophrenia

ASIAN NETWORK FOR
SCHIZOPHRENIA
RESEARCH

Final Programme

accredited by the European Council for Continuing Education
(EACCME) with 15 CME credits

www.schizophrenianet.eu

TABLE OF CONTENT

	Page
Welcome Address.....	3
Conference Organisation.....	4
Conference Information.....	5
Format Descriptions /CME Credits	8
Opening Ceremony and	
Welcome Reception.....	10
Overview Scientific Programme.....	11
Scientific Programme	
Thursday, 29 September	14
Friday, 30 September.....	24
Saturday, 1 October	38
Acknowledgements.....	50
Floorplan.....	50
Index Chairpersons, Authors and Presenters	52



Dear Colleagues,

Schizophrenia is a very complex disorder and even now, 100 years after it was first described, we know very little about its causes and origins. The available treatments often do not adequately meet the heterogeneous needs of schizophrenia patients. In recent years, controversies about the aetiology of schizophrenia, the significance of the symptomatology, reliable diagnosis and appropriate classification systems and, of course, optimal and personalized treatment have initiated much research in this field and created a vast amount of data. The development of new technologies has provided new insights into some of the pathogenetic pathways of the disorder.

For the above reasons, it is vital to critically discuss recent advances and to regularly update the scientific knowledge about schizophrenia and translate it into clinical practice. The identification of emerging issues for schizophrenia research and, as a consequence, the outlining of a research agenda and initiation of respective collaborations and networking activities are forward-looking tasks for the scientific community. In addition, it is necessary to promote the implementation of evidence-based strategies to meet challenges such as treatment non-adherence, stigma and social exclusion as well as to ensure the quality of care.

The Competence Network on Schizophrenia initiated and has meanwhile established the European Conference on Schizophrenia Research (ECSR) as a forum to promote these comprehensive and significant issues. Accordingly, the scientific programme of this year's 3rd ECSR includes high quality contributions from acknowledged experts, young scientists, and clinicians, all of whom have the common goal of improving the situation of patients. A broad range of topics will be presented in plenary lectures, prearranged and submitted symposia, workshops, and oral presentation and poster sessions. As in previous years, the co-organising psychiatric associations and their respective schizophrenia sections play a valuable role in this joint thematic conference. We are delighted that the Asian Network for Schizophrenia Research has now also become one of our partners.

On behalf of the scientific committee and the organisers, I cordially welcome you to this biennial European Schizophrenia Research Conference.

Sincerely yours,

Wolfgang Gaebel
*Congress President and
Speaker of the Competence Network on Schizophrenia*

CONFERENCE ORGANISATION

ORGANISERS



Competence Network
on Schizophrenia (CNS)



European Psychiatric Association (EPA)



German Association for Psychiatry
and Psychotherapy (DGPPN)



in cooperation with

WPA World Psychiatric Association
and its Section on Schizophrenia

ASIAN NETWORK FOR
SCHIZOPHRENIA
RESEARCH

LOCAL ORGANISER

PsychoseNetz e.V.
Wolfgang Gaebel, Wolfgang Wölwer,
Viktoria Toeller
c/o Department of Psychiatry
and Psychotherapy
Heinrich-Heine-University Düsseldorf
LVR Clinic Center
Bergische Landstraße 2
40629 Düsseldorf, Germany

PROFESSIONAL CONFERENCE ORGANISER

Hanser & Co GmbH
Postfach 12 21
22882 Barsbüttel, Germany
Phone: +49 – 40 – 670 88 20
Fax: +49 – 40 – 670 32 83
Email: schizophrenia@cpo-hanser.de

SCIENTIFIC PROGRAMME COMMITTEE

Wolfgang Gaebel, Germany
Congress President

George Awad, Canada
Finn Bengtsson, Sweden
Dinesh Bhugra, UK
Gerd Buchkremer, Germany
George Christodoulou, Greece
Peter Falkai, Germany
Silvana Galderisi, Italy
Wagner F. Gattaz, Brazil
Birte Glenthøj, Denmark
Philippe Gorwood, France
Heinz Häfner, Germany
Cyril Höschl, Czech Republic
Joachim Klosterkötter, Germany
Valery Krasnov, Russia
Shôn Lewis, UK
Jan Libiger, Czech Republic
Wolfgang Maier, Germany
Mario Maj, Italy
Stephen Marder, USA
Patrick McGorry, Australia
Hans-Jürgen Möller, Germany
Merete Nordentoft, Denmark
Michael Owen, UK
Victor Peralta, Spain
Wulf Rössler, Switzerland
Pedro Ruiz, USA
Bernard Sabbe, Belgium
Norman Sartorius, Switzerland
Frank Schneider, Germany
Wolfgang Wölwer, Germany
Til Wykes, UK

CONFERENCE VENUE

The Dahlem Cube
Seminaris Science & Conference Center
Takustraße 39
14195 Berlin, Germany

CONFERENCE REGISTRATION COUNTER

All conference material and documentation are available at the conference registration counter located in the foyer on the ground floor of the Dahlem Cube.

OPENING HOURS

Thursday, 29 Sept. 2011	08.00 – 18.00 h
Friday, 30 Sept. 2011	08.00 – 18.30 h
Saturday, 1 Oct. 2011	08.00 – 16.00 h

During these opening hours the conference counter can be reached at:
Phone: +49 – 30 – 55 77 97 480

REGISTRATION FEE

On-site Registration

Competence Network members and members of CNS, EPA, DGPPN, WPA	EUR 440,00
Non-members	EUR 490,00
Trainees *	EUR 390,00

* Non-tenured junior scientists or clinical residents in training under 35 years (Trainee status must be confirmed by a certificate in writing by head of department and copy of passport).

ON-SITE REGISTRATION

On-site registration will be processed on a first-come, first-served basis. Priority will be given to pre-registered delegates. Depending on the number of on-site registered delegates, availability of conference documentation may be limited.

NAME BADGES

Participants are kindly requested to wear their name badge at all times during the conference including the Opening Ceremony and Welcome Reception.

CONFERENCE LANGUAGE

The conference language is English. Simultaneous translation will not be provided.

PROGRAMME CHANGES

The organisers cannot assume liability for any changes in the conference programme due to external or unforeseen circumstances.

CERTIFICATE OF ATTENDANCE

A certificate of attendance will be handed out upon demand at the registration counter.

ABSTRACT BOOK

All accepted abstracts are published in an abstract book as a supplement of the European Archives of Psychiatry and Clinical Neurosciences (EAPCN). The abstract book will be handed out together with the conference documentation at the registration counter.

MEDIA CHECK

The Media Check is located in room Yale 1 on the first floor of the Seminaris Science & Conference Center. Speakers are asked to hand in their CD ROM or USB stick, containing the PowerPoint presentation (IBM format or compatible, no multisession) preferably one day before their session but at the latest 90 minutes prior to the presentation. The presentation will be transferred to a special conference notebook in the hall of the presentation. Due to time and technical reasons we kindly ask the speakers not to use their own notebook.

OPENING HOURS

Thursday, 29 Sept. 2011	08.00 – 18.00 h
Friday, 30 Sept. 2011	08.00 – 18.30 h
Saturday, 1 Oct. 2011	08.00 – 15.00 h

CONFERENCE INFORMATION

POSTER EXHIBITION

The poster exhibition is located in the foyer on the ground floor of the Dahlem Cube. Posters will be changed daily and are on display for the entire day of the according poster tour. They will be sorted by topics and will be numbered within those topics. The poster exhibition is open to all registered delegates:

Poster Exhibition Times for P-01 to P-03

Thursday, 29 Sept. 2011:	10.00 – 18.00 h
Guided Poster Tour:	13.30 – 14.30 h

Poster Exhibition Times for P-04 to P-07

Friday, 30 Sept. 2011:	09.00 – 18.00 h
Guided Poster Tour:	13.30 – 14.30 h

Poster Exhibition Times for P-08 to P-11

Saturday, 1 Oct. 2011:	09.00 – 16.00 h
Guided Poster Tour:	13.30 – 14.30 h

Interested participants can meet the authors for discussions of their poster presentation during the time of the poster tour.

Set-up and dismantling times for posters

Posters need to be set up and dismantled on the day of the respective poster tour within the following times:

Set-up:

Thursday, 29 Sept. 2011:	08.00 – 10.00 h
Friday, 30 Sept. 2011:	08.00 – 09.00 h
Saturday, 1 Oct. 2011:	08.00 – 09.00 h

Dismantling

Thursday, 29 Sept. 2011 and	
Friday, 30 Sept. 2011:	18.00 – 19.00 h
Saturday, 1 Oct. 2011:	16.00 – 17.00 h

on the day of the presentation

Posters which have not been removed within the indicated dismantling time will be disposed.

COFFEE BREAKS

Coffee, tea and mineral water will be served free of charge to all registered delegates during the morning and afternoon coffee breaks from Thursday, 29 September to Saturday, 1 October 2011. Coffee bar stations are located on the first floor and in the foyer of the ground floor next to the poster exhibition.

LUNCH AND RESTAURANTS

A lunch snack will be served to all registered delegates during the lunch breaks from Thursday, 29 September to Saturday, 1 October 2011 in the foyer of the ground floor next to the poster exhibition. The conference venue further provides a restaurant where lunch is available on cash basis.

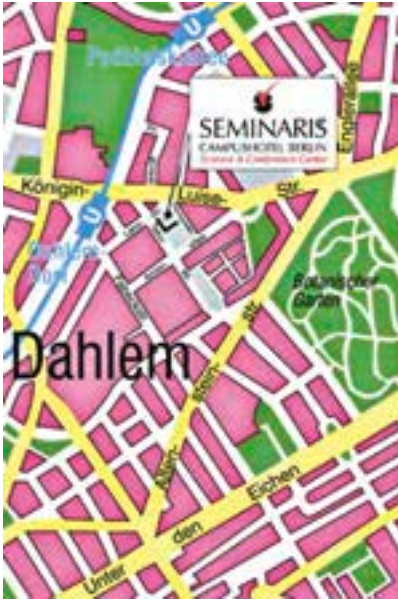
MOBILE PHONES

Participants are kindly requested to keep their mobile phones turned off while attending the scientific sessions in the meeting rooms.

INSURANCE

The conference fee does not include insurance. All participants are advised to arrange for their own insurance. Health and accident insurance is recommended and has to be purchased in your country of residence.

How to get to the Seminaris Campus Hotel:



By car:

From the North: A 115 southward, AS 2 Hüttenweg direction city, turn left Clayallee, right into Königin-Louise-Straße, right into Takustraße/Lansstraße

From the West: A2/A 10/A 115 direction Potsdam/Berlin/AS 4 Zehlendorf/B1 Potsdamer Chaussee/ turn left Clayallee/right Königin-Louise-Straße/right into Takustraße/Lansstraße

From the South: via A 103/AS 5 Schlosstraße to the B1, Unter den Eichen, turn right into Fabeckstraße then Lansstraße

From the East: via A 12/A 10/A 113 direction airport BBI (Schönefeld)/A 100/A 103/exit 5 Wolfensteindamm, turn right into Schlosstraße direction Dahlem/left into Grunewaldstraße/Königin-Luise-Straße/Lansstraße

Distance to the airport:

Berlin Tegel: Transfer time by taxi approximately 30 minutes depending on traffic

Berlin Schönefeld: Transfer time by taxi approximately 45 minutes depending on traffic

By train:

Berlin main station (ICE, IC-, RE- und RB-Station), then take the underground U3 to station "Dahlem-Dorf". Exit the station towards Königin-Louise-Straße. Follow the road for 300 m until you reach the crossroad Takustraße.

City hotels Kurfürstendamm:

Point of departure: Heidelberger Platz
Take the underground U3 to Krumme Lanke and get off at Dahlem-Dorf towards direction Königin-Louise-Straße. From here 300 m walk to the Seminaris Campushotel.

PARKING

There is an underground car park with direct access to the Seminaris Campus Hotel. The parking fee is 2 Euros per hour and 12 Euros per night.

The scientific programme will comprise the following formats:

PLENARY LECTURES

Invited lectures of 45 min each, covering current hot spots in schizophrenia research and given by leading European experts.

SYMPOSIA

Pre-arranged or submitted symposia of 90 min each, including four presentations and time for discussion covering major topics of the conference. Both symposia with a clear scientific focus and those with a clear clinical focus will be included.

WORKSHOPS

Pre-arranged workshops allowing for detailed discussion on scientific topics in particular serving transnational collaboration within Europe. Participation included in the registration fee.

ORAL PRESENTATION SESSIONS

Submitted presentations grouped by topics into thematic oral sessions of 90 min, including six papers each.

POSTER SESSIONS

Submitted presentations grouped by topics into thematic guided poster sessions.

CME ACCREDITATION

The Competence Network on Schizophrenia c/o LVR Clinic Center, Department of Psychiatry and Psychotherapy, Düsseldorf University is accredited by the European Accreditation Council for Continuing Medical Education (EACCME) to provide the following CME activity for medical specialists.

The 3rd European Conference on Schizophrenia Research – Facts and Visions is designated for a maximum of (or 'for up to') **15 hours = 15 CME credit points** of European external CME credits. Each medical specialist should claim only those hours of credit that he/she actually spent in the educational activity.

The EACCME is an institution of the European Union of Medical Specialists (UEMS), www.uems.net.

EACCME credits are recognized by the German Chamber of Physicians as well as the American Medical Association towards the Physician's Recognition Award (PRA). To convert EACCME credit contact your regional chamber of physicians or with respect to AMA PRA category 1 credit, contact the AMA.



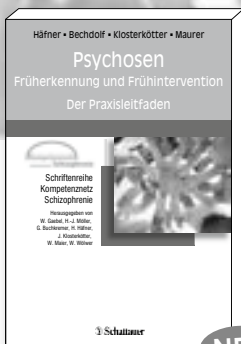
NEU

Sachs, Volz (Hrsg.) Neurokognition und Affektregulierung bei schizophrenen Psychosen

Neuropsychologie, Bildgebung, Testdiagnostik und Behandlung

- **Praxisorientiert:** Darstellung kognitiver Defizite und diagnostischer Instrumente
- **Einblicke:** Funktionsweise betroffener Hirnareale anhand neurobiologischer Grundlagen und bildgebender Verfahren verständlich gemacht
- **Umfassend:** Integrative Therapiekonzepte mit kognitiver Remediation, psychologischer Behandlung und atypischen Antipsychotika sowie mit neu entwickelten Medikamenten

2012. Ca. 170 Seiten, ca. 50 Abb., kart.
Ca. € 49,- (D) / € 50,40 (A)
ISBN 978-3-7945-2783-0



NEU

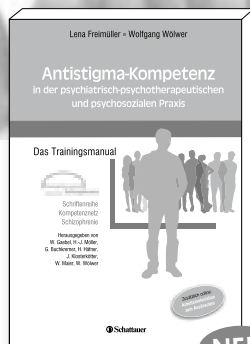
Häfner, Bechdolf, Klosterkötter, Maurer Psychosen – Früher- kennung und Früh- intervention

Der Praxisleitfaden

Schriftenreihe Kompetenznetz
Schizophrenie (Hrsg. v. W. Gaebel,
H.-J. Möller, G. Buchkremer, H. Häfner,
J. Klosterkötter, W. Maier, W. Wölwer)

- **Einmalig:** Erstveröffentlichung deutschsprachiger Materialien zur Abschätzung des individuellen Psychoserisikos (ERIRAos: Mannheimer Früherkennungsinventar)
- **An der Praxis ausgerichtet:** Checklisten zur Früherkennung, detailliertes Interviewheft zur Gesprächsführung, Fallberichte
- **Inklusive Online-Zugang:** Umfangreiches Zusatzmaterial exklusiv im Netz abrufbar

2011. Ca. 112 Seiten, 11 Abb., 23 Tab., kart.
Ca. € 24,95 (D) / € 25,70 (A)
ISBN 978-3-7945-2704-5



NEU

Lena Freimüller • Wolfgang Wölwer Antistigma-Kompetenz in der psychiatrisch- psychotherapeutischen und psychosozialen Praxis

Das Trainingsmanual

Schriftenreihe Kompetenznetz
Schizophrenie (Hrsg. v. W. Gaebel,
H.-J. Möller, G. Buchkremer, H. Häfner,
J. Klosterkötter, W. Maier, W. Wölwer)

- **Mit Manual für die Gruppenleitung:** Inklusive umfangreicher praxisorientierter Zusatzmaterialien
- **Mit Online-Zugang:** Zahlreiche Arbeitsmaterialien exklusiv im Netz abrufbar
- **Gemeinsam gegen Diskriminierung:** Entstanden in Zusammenarbeit mit Betroffenen

2011. Ca. 136 Seiten, ca. 39 Abb., ca. 24 Tab., kart.
Ca. € 24,95 (D) / € 25,70 (A)
ISBN 978-3-7945-2861-5

OPENING CEREMONY AND WELCOME RECEPTION

Thursday, 29 September 2011

Opening Ceremony

09.30 – 10.15 h

Plenary Room

► **Presidential Address**
Professor Wolfgang Gaebel, Düsseldorf, Germany
*Congress President, Speaker of the
Competence Network on Schizophrenia (CNS)*

► **Welcome Addresses**
Professor Patrice Boyer, Paris, France
President of the European Psychiatric Association (EPA)

Professor Peter Falkai, Göttingen, Germany
*President of the German Association for
Psychiatry and Psychotherapy (DGPPN)*

► **Award Ceremony of the Aretaeus-Award Winner 2011**

Welcome Reception

18.00 – 19.00 h

Foyer

At the end of the scientific sessions participants are invited to join the Welcome Reception in the Foyer of the Dahlem Cube. Finger food and drinks will be provided.

Room Time	Plenary	Harvard	Stanford	Princeton	Yale 2	Foyer
09.30 – 10.15	Opening Ceremony					Registration Counter Opening Hours: 08.00 – 18.00
10.15 – 11.00	PL-01 A hundred years of schizophrenia: from Bleuler to DSM-V/ ICD-11					
	Coffee Break					
11.30 – 13.00	S-01 Developments in DSM-V and ICD-11 with respect to schizophrenia	S-02 Suicide and suicidal behavior in recent onset psychotic disorders	S-03 Brain imaging in the early stages of schizophrenia	S-04 Advances in animal models of schizophrenia: genes, environment, and prevention to biological foundations		
13.00 – 14.30	Lunch Break 13.30 – 14.30 h ► Guided Poster Sessions P-01 to P-03 P-01: Drug treatment I: Clinical P-02: Co-morbidity P-03: Neuroimaging					
14.30 – 16.00	S-05 The future of psychiatric genetics beyond GWAS	S-06 Efficacy and mechanisms of cognitive behavior therapy for psychosis results of the POSITIVE network	S-07 Insight in psychosis: cognitive and neural basis, and implications for treatment	S-08 Neuroprotective strategies in schizophrenia	W-01 MedicaWiki: a webbased independent evidence based psychopharmacological prescription decision system	
	Coffee Break					
16.30 – 18.00	S-09 Novel therapeutic targets for treating schizophrenia	S-10 Cognitive behaviour therapy for psychosis: what do we know about its effectiveness and neural correlates?	O-01 Co-morbidity	S-11 Motor symptoms as an intrinsic component of schizophrenia pathobiology		
18.00 – 19.00	Welcome Reception in the Foyer					

Abbreviations

PL – Plenary Lecture

S – Symposium

W – Workshop

O – Oral Presentation

OVERVIEW – Friday, 30 September 2011

Room Time	Plenary	Harvard	Stanford	Princeton	Yale 2	Foyer	
08.30 – 10.00	S-12 Negative symptoms of schizophrenia: assessment, domains and relationships with outcome	S-13 Antipsychotics in the elderly	S-14 Glutamate dysfunction in schizophrenia and bipolar disorder: evidence from genetics and brain imaging	O-02 Epidemiology and clinical phenotypes		Registration Counter Opening Hours: 08.00 – 18.30	
	Coffee Break						
10.30 – 12.00	S-15 Cognition in schizophrenia: from neural mechanisms to psychological interventions	S-16 EPA position statements concerning schizophrenia and beyond	S-17 Social cognition and violent behavior in schizophrenia	O-03 Early stages of schizophrenia			
12.15 – 13.00	PL-02 Schizophrenia treatment and prevention – facts and visions						
13.00 – 14.30	Lunch Break 13.30 – 14.30 h ▶ Guided Poster Sessions P-04 to P-07 P-04: Epidemiology, diagnosis P-05: Genetics, neurotransmission P-06: Neurobiology P-07: Drug treatment II: Basic						
14.30 – 16.00	W-02 Past, current and future European schizophrenia research projects	O-04 Drug and other somatic treatments	S-18 Schizophrenia – a mild encephalitis?	S-19 Psychomotor symptoms in schizophrenia	W-03 Writing manuscripts for publication in English language scientific journals		
	Coffee Break						
16.30 – 18.00	S-20 Toxicity of relapse	S-21 Co-morbidity of schizophrenia and physical illness	S-22 Advances in understanding the causes of schizophrenia	S-23 PREVENT: a multidimensional study of people at risk to develop first episode psychosis:...	until 17.30 h		
18.15 – 19.45		S-24 Strength based treatment in an early psychosis ACT team: engaging the troublesome avoiders	S-25 Psychotic symptoms in schizophrenia – biological correlates, clinical outcome and therapeutic consequences	O-05 Psychosocial treatment			

Room Time	Plenary	Harvard	Stanford	Princeton	Foyer
08.30 – 10.00	S-26 Psychosis: psycho- logical therapies and their mecha- nisms of action	S-27 First-episode programmes: concepts and proven evidence	S-28 Dopaminergic and glutamatergic dysfunction in schizophrenia	O-06 Genetics and neurobiology	Registration Counter Opening Hours: 08.00 – 16.00
	Coffee Break				
10.30 – 12.00	W-04 European practice guidelines: a need for harmonisation?	S-29 Understanding minds: a concep- tual framework in the research and clinical features of schizophrenia	S-30 Early recognition and early intervention: facts and visions	S-31 Animal models of schizophrenia between genotype, endophenotype, nongenetic second hit and the disease	
12.15 – 13.00	PL-03 Social cognition and schizophrenia				
13.00 – 14.30	Lunch Break 13.30 – 14.30 h ► Guided Poster Sessions P-08 to P-11 P-08: Outcome P-09: Neuropsychology I: Basic P-10: Neuropsychology II: Clinical P-11: Psychosocial treatment				
14.30 – 16.00	S-32 Classification of different long- term outcomes of psychosis in schizo- phrenia spectrum – a need for re- conceptualization	S-33 Molecular linkage between energy metabolism and oligodendrocyte pathology in schizophrenia	S-34 Heterogeneity and functional signi- ficance of white matter changes in schizophrenia	O-07 Neuropsychology and neuroimaging	

PL-01	PLENARY LECTURES
10.15 – 11.00 h	Plenary Room
A hundred years of schizophrenia: from Bleuler to DSM-V / ICD-11	
<i>Chair: P. Falkai, Göttingen, Germany</i>	

PL-01-001
A hundred years of schizophrenia: from Bleuler to DSM-V / ICD-11
A. Jablensky, Perth, Australia

S-01	SYMPOSIA
11.30 – 13.00 h	Plenary Room
Developments in DSM-V and ICD-11 with respect to schizophrenia	
Jointly organised by the Competence Network on Schizophrenia (CNS) and the Section on Schizophrenia of the World Psychiatric Association (WPA)	
<i>Chairs: W. Gaebel, Düsseldorf, Germany R. Tandon, Gainesville, USA</i>	

S-01-001
Trends, perspectives and problems of classification systems
N. Sartorius, Geneva, Switzerland

S-01-002
Defining schizophrenia: from Kraepelin to DSM-V
R. Tandon, Gainesville, USA

S-01-003
Recent developments on the way to ICD-11
W. Gaebel, Düsseldorf, Germany

S-02	SYMPOSIA
11.30 – 13.00 h	Harvard
Suicide and suicidal behavior in recent onset psychotic disorders	
<i>Chairs: I. Melle, Oslo, Norway M. Nordentoft, Copenhagen, Denmark</i>	

S-02-001
Risk and suicidal behavior in recent onset psychotic disorders
*M. Nordentoft, Copenhagen, Denmark
M. Pompili, P. Mortensen, C. Pedersen, T. M. Laursen*

S-02-002
Development of suicidal behavior in first episode psychosis
*I. Melle, Oslo, Norway
J. O. Johannessen, J. I. Røssberg, I. Joa, U. Haahr, S. Friis, T. K. Larsen, S. Opjordsmoen, E. Simon- sen, P. Vaglum, B. Rund, T. McGlashan*

S-02-003
Self-disorders and suicidality in recent on- set psychotic disorders
E. Haug, Ottestad, Norway

S-02-004
Insight, subjective experiences and suicidal behavior in first episode psychosis
E. Barrett, Oslo, Norway

S-03	SYMPOSIA
11.30 – 13.00 h	Stanford
Brain imaging in the early stages of schizophrenia	
Jointly organised by the Competence Network on Schizophrenia (CNS) and the Asian Network for Schizophrenia Research (ANSR)	
<i>Chairs: J. S. Kwon, Seoul, Republic of Korea</i>	
<i>O. Howes, London, United Kingdom</i>	

S-03-001

Structural and functional brain alterations in individuals at ultra-high risk for psychosis: an overview and future directions

J. S. Kwon, Seoul, Republic of Korea

S-03-002

Brain alterations and cognitive correlates in individuals at ultra-high risk psychosis

E. Meisenzahl, Munich, Germany

N. Koutsouleris

S-03-003

Brain alterations in individuals at ultra-high risk for psychosis: emotional correlates

A. Aleman, Groningen, The Netherlands

E. Opmeer, E. Liemburg, R. Nieboer, L. Wunderink

S-03-004

Fronto-striatal interactions in individuals at ultra-high risk for psychosis

O. Howes, London, United Kingdom

S-04	SYMPOSIA
11.30 – 13.00 h	Princeton
Advances in animal models of schizophrenia: genes, environment, and prevention to biological foundations	
<i>Chairs: J. Feldon, Zurich, Switzerland</i>	
<i>M. Pletnikov, Baltimore, USA</i>	

S-04-001

A mouse model for the study of synergistic interactions between prenatal immune activation and peri-pubertal stress in the development of schizophrenia-relevant disease

U. Meyer, Schwerzenbach, Switzerland

S. Giovanoli, J. Feldon

S-04-002

Prevention of schizophrenia-relevant brain and behavioral pathology by adolescent antipsychotic drug administration in an infection-based rat model of schizophrenia

I. Weiner, Tel-Aviv, Israel

S-04-003

DISC1 modulates immune response in the brain

M. Pletnikov, Baltimore, USA

S-04-004

Combining pharmacological and genetic approaches to animal models of schizophrenia: experimental approaches in dopamine receptor deficient mice

P. Moran, Nottingham, United Kingdom

M. O'Callaghan, C. Bay-Richter, C. O'Tuathaigh, J. Waddington

P-01 POSTER SESSIONS

13.30 – 14.30 h

Foyer

Drug treatment I: Clinical

Chair: H.-J. Möller, Munich, Germany

P-01-001

Comparative effect of typical and atypical antipsychotic medication on cognitive functions in schizophrenia – cross-sectional study on patients admitted in a psychiatric unit in Bucharest in a 3 months period

A. I. Mihailescu, Bucharest, Romania

T. Donisan, B. Caval, M. Ilie, O. Dumitru

P-01-002

Impact on creativity of typical vs. atypical antipsychotic medication in schizophrenia – cross-sectional study on patients admitted in a psychiatric unit in Bucharest in a 3 months period

A. I. Mihailescu, Bucharest, Romania

B. Caval, T. Donisan, V. Volovici, R. Radu, O. Popa Velea

P-01-003

Comparative assessment of haloperidol and risperidone effect on neuromarkers and endothelium dysfunction indices in patients with the first psychotic episode

A. Vasilyeva, Chita, Russia

N. Govorin

P-01-004

Predicting dopamine D2 receptor occupancy following antipsychotic dose reduction: a pilot PET study

H. Uchida, Tokyo, Japan

R. Bies, T. Suzuki, A. Graff-Guerrero, B. Pollock,

B. Mulsant, D. Mamo

P-01-005

Pharmacological daily dose and cognitive impairment in patients with schizophrenia spectrum disorders

D. Roesch-Ely, Heidelberg, Germany

M. Rehse, M. Bartolovic, D. Weigand, K. Rodewald, M. Weisbrod

P-01-007

Treatment with haloperidol and changes in glucose values in patient with schizophrenia

O. Kozumplik, Zagreb, Croatia

S. Uzun, N. Mimica, M. Jakovljevic

P-01-008

Lamotrigine withdrawal associated worsening of positive symptoms in patients with schizophrenia

T. Szafranski, Warszawa, Poland

P-01-009

Post-hoc analysis from two randomised studies: efficacy, tolerability and dose-response of quetiapine XR 400/600/800MG/day in acute schizophrenia

A. H. Kalali, San Diego, USA

R. Kahn, U. Gustafsson, S. Nyberg

P-01-010

Norquetiapine and depressive symptoms in schizophrenia

H. Rasmussen, Glostrup, Denmark

B. Ebdrup, B. Aggernaes, H. Lublin, B. Oranje,

L. Pinborg, G. Moos Knudsen, B. Glenthøj

P-01-011

Treatment with ziprasidone and changes in egg in patient with schizophrenia

S. Uzun, Zagreb, Croatia

O. Kozumplik, N. Mimica, M. Jakovljevic

P-01-012

Evolution of function and sleep in a sample of schizophrenics patients during one year of treatment with extended-release paliperidone

A. Benito Ruiz, Toledo, Spain

L. Donaire, R. Ochoa, G. Lahera, A. Benito Ruiz

P-02	POSTER SESSIONS
13.30 – 14.30 h	Foyer
Co-morbidity	
<i>Chair: B. Sabbe, Wilrijk, Belgium</i>	

P-02-001

Alcohol abuse and schizophrenia: possible predictors and consequences

S. Djordjevic, Kovin, Serbia

L. Leposavic, D. Kernican

P-02-002

The relationship between baseline prepulse inhibition levels and ethanol withdrawal severity in rats

H. Kayir, Ankara, Turkey

O. Yavuz, G. Goktalay, M. Yildirim, T. Uzbay

P-02-003

Relationship between smoking cessation and gender in first psychotic patients after long-term follow-up

M. Martinez-Cengotitabengoa, Vitoria, Spain

S. Alberich, B. Garcia, S. Barbeito, M. Karim,

C. Valcarcel, A. Gonzalez-Pinto

P-02-004

The increasing comorbidities in schizophrenic patients

A. Dangellia, Tirana, Albania

P-02-006

Alexithymia and psychopathology in schizophrenia

S. van Geert, Gent, Belgium

S. Vanheule, R. Kessels, P. Naert

P-02-007

Suicidality level correlated with borderline personality traits in patients with depressive disorder and schizophrenia

A. Petek Eric, Osijek, Croatia

K. Dodig Urkovi, V. Kova, J. Ivanušić, P. Filakovi,

M. Petek

P-02-008

Suicidal ideation among schizophrenic patients

T. Rahim, Erbil, Iraq

B. Saeed

P-02-009

Metabolic syndrome in patients treated with antipsychotics: a follow-up study

P. Steylen, Venray, The Netherlands

F. van der Heijden, W. Verhoeven

P-02-011

Cardiovascular risk factors in patients with schizophrenia; do we detect and treat it?

A. Pose Cabarcos, Madrid, Spain

J. J. de Frutos Guijarro, F. García Sánchez

P-02-012

Dental hygiene in schizophrenia: a large-scale cross-sectional survey

H. Tani, Asahi-Machi Nirasaki-Shi, Japan

T. Suzuki, Y. Shibuya, H. Shimanuki, K. Watanabe, R. Den, M. Nishimoto, J. Hirano, H. Uchida

P-02-013

Thyroid abnormalities in schizophrenia

S. C. Nova Bethania, Bangalore, India

P-03	POSTER SESSIONS
13.30 – 14.30 h	Foyer
Neuroimaging	
<i>Chair: W. Strik, Bern, Switzerland</i>	

P-03-001

Alterations of the brain reward system in antipsychotic naïve schizophrenic patients

M. Ø. Nielsen, Glostrup, Denmark

E. Rostrup, S. Wulff, S. Kapur, B. Glenthøj

P-03-002

Dopamine disturbances in relation to reward processing in schizophrenia

S. Wulff, Glostrup, Denmark

M. Ø. Nielsen, H. Rasmussen, E. Rostrup, L. T. Jensen, G. M. Knudsen, B. Glenthøj

P-03-003

Association of serum BDNF levels with hippocampal volumes in first psychotic episode drug-naïve schizophrenic patients

E. Rizos, Athens, Greece

M. Papathanasiou, P. Michalopoulou, A. Mazioti, A. Kastania, P. Nikolaidou, E. Laskos, V. Miridakis, V. Kontaxakis, L. Lykouras

P-03-004

Against an unitary view of schizophrenia: commonalities and differences of two phenotypes using connectivity fMRI

J. Foucher, Strasbourg, France

F. Berna, G. Stöber

P-03-005

Dysfunctional neural networks of time perception in schizophrenia

F. Ortuno, Pamplona, Spain

J. Gómez, M. Valejjo

P-03-006

Task positive and task negative network in schizophrenia: decreased deactivation is related to structural deficits

N. Pujol, Barcelona, Spain

R. Penadés, R. Catalán, M. Bernardo, C. Junqué

P-03-007

Contribution of the mirror neuron system to joint action perception

B. Backasch, Marburg, Germany

B. Straube, F. Klöhn-Saghatolislam, T. Kircher, D. Leube

P-03-008

Auditory oddball P300 and 1H-magnetic resonance spectroscopy of the dorsolateral prefrontal cortex in young male patients with schizophrenia

I. Lebedeva, Moscow, Russia

N. Semenova, S. Sidorin, V. Kaleda, A. Barkhatova, E. Rummyantseva, T. Akhadov

P-03-009

Auditory hallucinations in first episode psychotic subjects: a diffusion tensor imaging study of the arcuate fasciculus

F. Marques-Teixeira, Porto, Portugal

T. Reis Marques

P-03-010

Hippocampal gray matter density correlates with disorganized symptoms in schizophrenia

J. Siemerus, Zurich, Switzerland

I. Eva, R. Mirjana, L. Claudia, W. Godehard

P-03-011

Increased midline noise power in the gamma band in schizophrenia related to negative symptoms, working memory deficit and insular activity

V. Suazo, Salamanca, Spain

V. Molina, A. Diez, C. Martín, A. Ballesteros, P. Casado, M. Martín loeches, P. Tamayo, C. Montes

P-03-012

Combination of morphological features for recognition analysis of first-episode schizophrenia patients

T. Kasperek, Brno, Czech Republic

D. Schwarz, E. Janoušová, R. Prikryl, E. Češková

P-03-013

Neural correlates of cognitive behavioral therapy effects in schizophrenia

M. Cabanis, Marburg, Germany

A. Krug, M. Pyka, H. Walter, W. Wölwer, B. Müller, G. Wiedemann, K. Vogeley, A. Wittorf, S. Klingberg, T. Kircher

P-03-014

Structural brain correlates of sensorimotor gating in first-episode antipsychotic-naïve schizophrenia patients

T. B. Hammer, Copenhagen, Denmark

B. Oranje, A. Skimminge, B. Ebdrup, H. Bro, H. R. Siebner, B. Fagerlund, B. Glenthøj, W. Baare

Submit Online Today!

Acta Psychiatrica Scandinavica

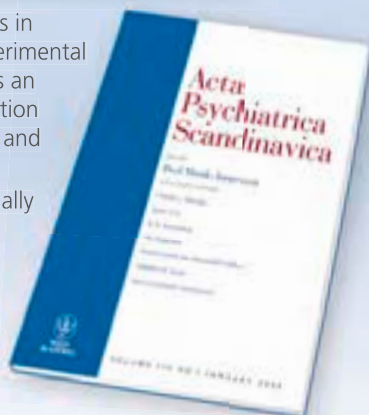
Contains high-quality scientific articles in English, representing clinical and experimental work in psychiatry. The journal acts as an international forum for the dissemination of information advancing the science and practice of psychiatry.

Original articles are welcomed, especially those that bring new knowledge or extend the present understanding of treatment. Equal priority is given to review articles and clinical overview articles.

Recent prominent authors include such world renowned researchers as: Leslie Citrome, Christoph U. Correll, Marc De Hert, Kenneth Kendler, Mario Maj, Gordon Parker, Stephen M. Stahl, David Taylor, Eduard Vieta and Jim van Os.

Topics covered in recent papers include:

- ADHD
- Autism
- Alzheimer disease
- Bipolar disorder
- Cannabis psychosis
- Depression
- Eating disorder
- Schizophrenia



Author Benefits:

- 1 **Quick and easy online submission** - via ScolarOne Manuscripts
- 1 **Advanced article tracking** - from submission through to acceptance and publication with Author Services
- 1 **Fast publication times** - articles are available online weeks ahead of print publication
- 1 **Online Open** - authors of articles in this journal can now choose to make their articles open access and available free for all readers through the payment of an author fee.

To submit your next paper to
Acta Psychiatrica Scandinavica, visit:
<http://mc.manuscriptcentral.com/actapsych>

For author guidelines and further information visit:
www.actapsychiatrica.com

S-05	SYMPOSIA
14.30 – 16.00 h	Plenary Room
The future of psychiatric genetics beyond GWAS	
Organised by the German Association for Psychiatry and Psychotherapy (DGPPN)	
Chairs: P. Falkai, Göttingen, Germany	
N.N.	

S-05-001

The future of the GWAS

T. Schulze, Göttingen, Germany

S-05-002

Proteomics and biomarkers

D. Martins-de-Souza, Cambridge, United Kingdom

S-05-003

Back to the phenotype or endophenotype?

O. Gruber, Göttingen, Germany

S-06	SYMPOSIA
14.30 – 16.00 h	Harvard
Efficacy and mechanisms of cognitive behavior therapy for psychosis: results of the POSITIVE network	
Chairs: S. Klingberg, Tübingen, Germany	
M. Wagner, Bonn, Germany	

S-06-001

Cognitive behavioral therapy versus supportive therapy for persistent positive symptoms in psychotic disorders: major results of the POSITIVE study

S. Klingberg, Tübingen, Germany

A. Wittorf, C. Meisner, W. Wölwer, G. Wiedemann, J. Herrlich, A. Bechdolf, B. Müller, G. Sartory, M. Wagner, G. Buchkremer

S-06-002

The therapeutic alliance in CBT for psychoses: course and predictive value for outcome

A. Wittorf, Tübingen, Germany

S. Klingberg

S-06-003

Cognitive biases and cognitive deficits in patients with positive symptoms: relationship with symptoms and with symptom change during psychotherapy

M. Wagner, Bonn, Germany

S-06-004

Cognitive behavior therapy in adolescents with persistent psychotic symptoms: results of randomised controlled trial

A. Bechdolf, Cologne, Germany

T. Tecic, G. Lehmkuhl, P. Walger, K. Mueller, G. Wiedemann, D. Stoesser, S. Klingberg

S-07	SYMPOSIA
14.30 – 16.00 h	Stanford
Insight in psychosis: cognitive and neural basis, and implications for treatment	
<i>Chairs: A. Aleman, Groningen, The Netherlands</i>	
<i>A. David, London, United Kingdom</i>	

S-07-001

Is there a neurological basis for poor insight in schizophrenia?

A. David, London, United Kingdom

N. Bedford, B. Wiffen, J. Gilleen

S-07-002

The association between self-reflective processing and insight in psychosis in schizophrenia patients: an fMRI study

L. van der Meer, Groningen, The Netherlands

M. Pijnenborg, A. Aleman

S-07-003

Neuropsychological dysfunction and poor insight in psychosis

A. Aleman, Groningen, The Netherlands

P. Quee, R. Bruggeman, M. Pijnenborg

S-07-004

Treatment of insight in schizophrenia: meta-analysis

M. Pijnenborg, Assen, The Netherlands

R. Donkersgoed, A. Aleman

S-08	SYMPOSIA
14.30 – 16.00 h	Princeton
Neuroprotective strategies in schizophrenia	
<i>Chairs: J. Priller, Berlin, Germany</i>	
<i>T. Wüstenberg, Berlin, Germany</i>	

S-08-001

Neuroprotection in schizophrenia: novel candidates and perspectives

J. Priller, Berlin, Germany

S-08-002

Brain-derived neurotrophic factor: also playing a neuroprotective role in schizophrenia?

R. Hellweg, Berlin, Germany

S-08-003

EPO treatment preserves gray matter in discrete brain regions of chronic schizophrenic patients

T. Wüstenberg, Berlin, Germany

M. Begemann, C. Bartels, O. Gefeller, S. Stawicki, D. Hinze-Selch, A. Mohr, P. Falkai, J. B. Al-denhoff, M. Knauth, K.-A. Nave, H. Ehrenreich

S-08-004

EPO: a new treatment for cognitive dysfunction and depressive symptoms in patients with affective disorder?

K. Miskowiak, Copenhagen, Denmark

W-01	WORKSHOPS
14.30 – 16.00 h	Yale 2
MedicaWiki: a webbased independent evidence based psychopharmacological prescription decision system – “decide & prescribe”	
<i>Chair: W. Broekema, Amersfoort, The Netherlands</i>	

S-09	SYMPOSIA
16.30 – 18.00 h	Plenary Room
Novel therapeutic targets for treating schizophrenia	
<i>Chairs: W. Maier, Bonn, Germany</i>	
<i>H.-J. Möller, Munich, Germany</i>	

S-09-001

Novel approaches for treating schizophrenia
G. Gründer, Aachen, Germany

S-09-002

Methodological challenges of demonstrating cognitive improvements with broad spectrum agents: a novel approach
A. H. Kalali, San Diego, USA
Y. Geffen, M. Davidson, M. R. Hufford, R. M. Gendreau, S. G. Rao, R. Zablocki, J. D. Kranzler

S-09-003

Selective phosphodiesterase inhibitors as a target for cognition enhancement in schizophrenia
J. Prickaerts, Maastricht, The Netherlands

S-09-004

LY2140023 Monohydrate: preclinical and clinical update on the development of a mGluR2/3 agonist treatment for schizophrenia
J.-C. Gomez, Indianapolis, USA

S-10	SYMPOSIA
16.30 – 18.00 h	Harvard
Cognitive behaviour therapy for psychosis: what do we know about its effectiveness and neural correlates?	
<i>Chairs: T. Kircher, Marburg, Germany</i>	
<i>T. Lincoln, Marburg, Germany</i>	

S-10-001

The effects of CBT in persons with ultra high risk: the Dutch EDIE trial
M. van der Gaag, Amsterdam, The Netherlands

S-10-002

Targeting social and symptomatic outcomes using CBT for psychosis: effectiveness, strategies and mediators
D. Fowler, Norwich, United Kingdom

S-10-003

Effectiveness of CBT in a German outpatient setting. Short and long term results of a controlled randomised trial
T. Lincoln, Marburg, Germany
M. Ziegler, S. Mehl, E. Luellmann, M.-L. Kesting, S. Westermann, W. Rief

S-10-004

How does CBT effect the brain of patients of schizophrenia: a multicenter fMRI study
T. Kircher, Marburg, Germany

O-01 ORAL PRESENTATIONS

16.30 – 18.00 h **Stanford**

Co-morbidity

*Chairs: N. Sartorius, Geneva, Switzerland
A. G. Awad, Toronto, Canada*

O-01-001

Is it time to consider comorbid substance abuse in schizophrenia as a dimension and indication for new antipsychotic drug development

A. G. Awad, Toronto, Canada

O-01-002

Cardiovascular risk factors in patients treated with antipsychotics: a follow-up study

*P. Steylen, Venray, The Netherlands
F. van der Heijden, W. Verhoeven*

O-01-003

Relationship between functionality and metabolic syndrome in schizophrenia

*J. M. Pelayo Teran, Madrid, Spain
Y. Zapico-Merayo, P. Trabajo-Vega, M. M. Martínez-Pérez, J. Martínez-Diez, C. Fernández-Borregan, M. J. Castelao-Lorenzo, P. Álvarez-Tejero*

O-01-004

Long term maintenance of weight loss in patients with severe mental illness through a behavioural programme in the UK. Results at 10 years of follow up

*J. Pendlebury, Manchester, United Kingdom
R. Holt, H. Wildgust, C. Bushe*

O-01-005

Cancer co-mortality profile in schizophrenia and psychotic disorders

*V. Ajdacic-Gross, Zurich, Switzerland
A. Tschopp, M. Bopp, F. Gutzwiller, W. Rössler*

O-01-006

Panic attacks, alexithymia and hallucinations in schizophrenia

*S. van Geert, Gent, Belgium
S. Vanheule, R. Kessels, P. Naert*

S-11 SYMPOSIA

16.30 – 18.00 h **Princeton**

Motor symptoms as an intrinsic component of schizophrenia pathobiology

*Chairs: S. Walther, Bern, Switzerland
J. Waddington, Dublin, Ireland*

S-11-001

Spontaneous involuntary movements as an integral component of network dysfunction in schizophrenia

*J. Waddington, Dublin, Ireland
K. Tomiyama, N. Koshikawa*

S-11-002

Dyskinesia and parkinsonism in antipsychotic naïve schizophrenia, first-degree relatives and controls; prevalence and methods of measurement

J. Koning, Amersfoort, The Netherlands

S-11-003

Neuromotor abnormalities in first-episode psychosis patients: status at antipsychotic naïve state and response to anti-psychotic drugs

M. J. Cuesta, Pamplona, Spain

S-11-004

Neurobiology and clinical correlates of quantitative motor activity in schizophrenia

S. Walther, Bern, Switzerland

S-12	SYMPOSIA
08.30 – 10.00 h	Plenary Room
Negative symptoms of schizophrenia: assessment, domains and relationships with outcome	
<i>Chairs: S. Galderisi, Naples, Italy</i>	
<i>W. Gaebel, Düsseldorf, Germany</i>	

S-12-001

Assessment of negative symptoms in schizophrenia

B. Kirkpatrick, Temple, USA

S-12-002

Are abnormalities of reward processing a key component of negative symptoms in schizophrenia?

F. Schlagenhauf, Berlin, Germany

G. Juckel, A. Heinz

S-12-003

The relationship between negative symptoms and neuropsychological impairment across psychotic disorders

A. Reichenberg, London, United Kingdom

M. Russo

S-12-004

Persistent negative symptoms in first episode psychosis patients

S. Galderisi, Naples, Italy

A. Mucci

S-13	SYMPOSIA
08.30 – 10.00 h	Harvard
Antipsychotics in the elderly	
<i>Chairs: W. Maier, Bonn, Germany</i>	
<i>C. Turrina, Brescia, Italy</i>	

S-13-001

Antipsychotics in treatment of behavioral and psychological symptoms in dementias

P. H. Robert, Nice, France

E. Mulin, R. David

S-13-002

Pharmacotherapy of neuropsychiatric symptoms in dementia in nursing homes

M. Rapp, Berlin, Germany

T. Majic, J.-P. Pluta, T. Mell, J. Kalbitzer, Y. Treusch,

A. Heinz, H. Gutzmann

S-13-003

Vascular side effects of neuroleptics and their prevention

C. Turrina, Brescia, Italy

E. Sacchetti

S-13-004

Use of antipsychotics in the elderly: regulatory aspects

K. Broich, Bonn, Germany

S-14	SYMPOSIA
08.30 – 10.00 h	Stanford
Glutamate dysfunction in schizophrenia and bipolar disorder: evidence from genetics and brain imaging	
<i>Chairs: J. Gallinat, Berlin, Germany</i>	
<i>D. Rujescu, Munich, Germany</i>	

S-14-001

GWAS, sequencing, systems biology, gene-environment studies: how to navigate through the jungle of contemporary psychiatric genetics

T. Schulze, Göttingen, Germany

S-14-002

Gamma oscillations, cognition and interaction of glutamatergic and GABAergic neurons

C. Mulert, Hamburg, Germany

S-14-003

Glutamatergic genes of schizophrenia and neuropsychological intermediate phenotypes

D. Rujescu, Munich, Germany

S-14-004

Dysfunction of dopamine-glutamate interaction: evidence from multimodal imaging

J. Gallinat, Berlin, Germany

M. Schäfer, F. Schubert

O-02	ORAL PRESENTATIONS
08.30 – 10.00 h	Princeton
Epidemiology and clinical phenotypes	
<i>Chairs: A. David, London, United Kingdom</i>	
<i>P. Bebbington, London, United Kingdom</i>	

O-02-001

COMT genotype and poor cognition is associated with a negative/disorganised schizophrenia subtype

M. Green, Darlinghurst, Australia

M. Dragovic, A. Jablensky, M. Cairns, P. Tooney,

R. Scott, C. Loughland, V. J. Carr

O-02-002

Psychosis dimensions and corollary scales in young and middle-aged adults in Zurich

V. Ajdacic-Gross, Zurich, Switzerland

M. P. Hengartner, K. Landolt, S. A. Rodgers,

M. Müller, I. Warnke, W. Kawohl, W. Rössler

O-02-003

Neurocognitive features in subgroups of bipolar disorder

S. R. Aminoff, Oslo, Norway

T. Hellvin, T. V. Lagerberg, A. O. Berg, O. A. Andreassen, I. Melle

O-02-004

Schizophrenia and autism – overlap and difference

M. Fitzgerald, Dublin, Ireland

O-02-005

Midlife progression and its clinical correlates in schizophrenia: a 43-year follow-up in the Northern Finland 1966 birth cohort

M. Isohanni, Oulu, Finland

E. Jääskeläinen, A. Alaräisänen, I. Isohanni,

J. Miettunen

O-02-006

What is the standard of living among clients in community early intervention programs? Data from the Matryoshka Project

C. Cheng, Thunder Bay, Canada

C. S. Dewa, L. Trojanowski, D. Loong

S-15	SYMPOSIA
10.30 – 12.00 h	Plenary Room
Cognition in schizophrenia: from neural mechanisms to psychological interventions	
<i>Chairs: W. Strik, Bern, Switzerland</i>	
<i>V. Roder, Bern, Switzerland</i>	

S-15-001

Brain circuits involved in thought and movement disorders

W. Strik, Bern, Switzerland

S. Walther

S-15-002

Brain-behaviour relation of emotion in schizophrenia

F. Schneider, Aachen, Germany

S-15-003

New approaches to cognitive remediation

A. Medalia, New York, USA

S-15-004

Integrated cognitive therapies: update and perspective

V. Roder, Bern, Switzerland

S. J. Schmidt, D. R. Müller

S-16	SYMPOSIA
10.30 – 12.00 h	Harvard
EPA position statements concerning schizophrenia and beyond	
Organised by the European Psychiatric Association (EPA)	
<i>Chairs: H.-J. Möller, Munich, Germany</i>	
<i>M. de Hert, Kortenberg, Belgium</i>	

S-16-001

Quality of mental health

W. Gaebel, Düsseldorf, Germany

S-16-002

Prevention of mental illness and promotion of mental health

D. Bhugra, London, United Kingdom

S-16-003

Cardiovascular disease in people with severe mental illness

M. de Hert, Kortenberg, Belgium

S-16-004

Value of antidepressants in the treatment of unipolar depression

H.-J. Möller, Munich, Germany

S-17	SYMPOSIA
10.30 – 12.00 h	Stanford
Social cognition and violent behavior in schizophrenia	
<i>Chairs: W. Wölwer, Düsseldorf, Germany</i>	
<i>S. Hodgins, London, United Kingdom</i>	

S-17-001

Violent behavior among people with schizophrenia: a framework for investigations of causes, prevention and treatment

S. Hodgins, London, United Kingdom

S-17-002

Social cognition and violence in schizophrenia: is there a link?

M. Brüne, Bochum, Germany

E. Brown

S-17-003

Childhood disruptive behavior disorders: phenotypes, neuropsychiatric predictors, and genetic background effects

N. Kerekes, Gothenburg, Sweden

S. Lundström, P. Jern, A. Tajnia, S. Brändström,

M. Råstam, P. Lichtenstein, H. Anckarsäter

S-17-004

Disturbed social cognition as a treatment target in schizophrenia patients with a history of violence

N. Frommann, Düsseldorf, Germany

F. Lüneborg, S. Stroth, J. Brinkmeyer, C. Luck-

haus, W. Wölwer

O-03	ORAL PRESENTATIONS
10.30 – 12.00 h	Princeton
Early stages of schizophrenia	
<i>Chairs: S. Ruhrmann, Cologne, Germany</i>	
<i>R. K. R. Salokangas, Turku, Finland</i>	

O-03-001

The period of prodromal symptoms to acute phase of illness: untreated schizophrenia

G. Bogojevic, Belgrade, Serbia

L. Žiravac

O-03-002

Duration of untreated psychosis and its relation to outcome in schizophrenia within the Northern Finland 1966 birth cohort

M. Penttilä, Oulu, Finland

J. Miettunen, H. Koponen, J. Veijola, M. Isohan-

ni, E. Jääskeläinen

O-03-003

How does childhood adversity impact on schizophrenia? Findings from the Australian Schizophrenia Research Bank (ASRB)

K. McCabe, Darlinghurst, Australia

E. Maloney, H. Stain, C. Loughland, V. Carr

O-03-004

Severe social anxiety in early psychosis is associated with poor premorbid functioning, depression and reduced quality of life

K. L. Romm, Oslo, Norway

I. Melle, C. Thoresen, O. A. Andreassen, J. I. Røssberg

O-03-005

Fullness of life reduces risk of psychosis in high-risk patients

R. K. R. Salokangas, Turku, Finland

M. Heinimaa, S. Luutonen, J. Klosterkötter, S.

Ruhrmann, H. Graf von Reventlow, D. Linszen,

M. Birchwood

O-03-006

Indicated prevention with Omega-3 fatty acids in young people with 'at-risk-mental-state' for psychosis: design of a 5-year follow-up

K. Papageorgiou, Vienna, Austria

M. R. Schäfer, M. Schlögelhofer, N. Mossaheb,

G. P. Amminger

PL-02 PLENARY LECTURES

12.15 – 13.00 h Plenary Room

Schizophrenia treatment and prevention – facts and visions

Chair: A. G. Awad, Toronto, Canada

PL-02-001

Schizophrenia treatment and prevention – facts and visions. Providing the best treatment today and developing better treatments for tomorrow

R. Tandon, Gainesville, USA

P-04 POSTER SESSIONS

13.30 – 14.30 h Foyer

Epidemiology, diagnosis

Chair: D. Bhugra, London, United Kingdom

P-04-001

The epidemiology of schizophrenia and other psychotic disorders among Finnish prisoners

M. Joukamaa, Tampere, Finland

J. Aarnio, S. Hakamäki, T. Lintonen, A. Mattila, H. Vartiainen, P. Viitanen, T. Wuolijoki

P-04-002

Temperament in individuals with psychotic disorders before and after the onset of illness

J. Miettunen, Oulu, Finland

P. Juola, E. Roivainen, J. Veijola, A. Alaräisänen, M. Isohanni, E. Jääskeläinen

P-04-003

A new epidemiological survey on stress, mental health and psychotic symptoms in young and middle-aged adults in Zurich

S. A. Rodgers, Zurich, Switzerland

M. P. Hengartner, V. Ajdacic-Gross, K. Landolt, M. Müller, I. Warnke, W. Kawohl, W. Rössler

P-04-004

Concordance rates and early risk factors in schizophrenia; a set-up for a twin study, including preliminary data on concordance rates from linking the Danish Twin Register and the Danish Psychiatric Central Register

R. Hilker, Glostrup, Denmark

B. Fagerlund, K. Christensen, M. Nordentoft, B. Glenthøj

P-04-005

Does reduced facial affect bias clinicians to overrate depression in patients with schizophrenia? Prevalence and explanatory factors of discordance between self- and observer rated depression in schizophrenia

M. Hartmann, Hamburg, Germany

T. Lincoln

P-04-006

Cycloid psychoses: where are they in ICD-10 and DSM-IV?

N. van de Kerkhof, Venray, The Netherlands

M. Schneider, F. van der Heijden, W. Verhoeven, G. Stöber

P-04-007

Klinefelter syndrome in a male identical twin and chronic schizophrenia-like psychosis

W. Verhoeven, Venray, The Netherlands

J. Egger, E. Wingbermühle, N. van de Kerkhof

P-04-008

Psychiatric disorders in children with cerebral palsy

C. Bertoncelli, Nice, France

D. Bertoncelli

P-04-009

Influence of child and adolescent psychiatric disorders on neurological development pathologies

C. Bertoncelli, Nice, France

M. Bertoncelli

P-04-010

Psychosis in herpes encephalitis

J. de Santiago, Barcelona, Spain

A. Sánchez Peña

P-05	POSTER SESSIONS
13.30 – 14.30 h	Foyer
Genetics, neurotransmission	
<i>Chair: A. Papassotiropoulos, Basel, Switzerland</i>	

P-05-001

The Australian Schizophrenia Research Bank (ASRB): the first 650 sample profile

*C. Loughland, Darlinghurst, Australia
K. McCabe, S. Catts, A. Jablensky, F. Hensken,
P. Michie, B. Mowry, C. Pantelis, U. Schall,
R. Scott, V. Carr, P. Tooney*

P-05-002

Association of Dystrobrevin-binding protein 1 gene with cognitive functioning in schizophrenic patients

*G. Bakanidze, Berlin, Germany
C. Hutzler, F. AuraB, S. Onken, M. Rapp, I. Puls*

P-05-004

Genome-wide significant association with negative mood delusions in 3q26.1

*S. Meier, Mannheim, Germany
J. Strohmaier, J. Frank, J. Treutlein, R. Breuer, M. Mattheisen, T. Mühleisen, S. Cichon, M. Nöthen, M. Rietschel*

P-05-005

Early visual processing measured with backward masking: The new endophenotype of schizophrenia?

*G. Bakanidze, Berlin, Germany
M. Roinishvili, E. Chkonia, M. Herzog, A. Brand, I. Puls*

P-05-006

Association of polymorphisms rs2055314, rs2272522 and rs331894 in close homologue of L1 gene with schizophrenia in state of Qatar

*N. Rizk, Doha, Qatar
K. Abdulla Al-ali, A. Alkaseri, S. Zainul Abdeen, E. Jose, T. Shaltout*

P-05-007

Association of the CTLA-4 gene with schizophrenia in Coimbatore, South Indian population

*P. Manikantan, Coimbatore, India
V. Balachnadar, K. Sasikala, S. Mohanadevi*

P-05-008

DTNBP1, HSPs and TAAR6 variations influence schizophrenic phenotype and treatment response

*T. Jun, Seoul, Republic of Korea
C. U. Pae, H. R. Wang, H. R. Song, Y. S. Woo, W.-M. Bahk*

P-05-009

Protein of metabotropic glutamate receptor has been detected in plasma of blood in schizophrenia

*L. Smirnova, Tomsk, Russia
L. Loginova*

P-05-010

CB2 cannabinoid receptor is involved in schizophrenia-like behaviours

*F. Navarrete Rueda, San Juan De Alicante, Spain
A. Ortega-Alvaro, A. Aracil-Fernandez, M. Garcia Gutierrez, J. Manzanares Robles*

P-05-011

Ketamine affects gene expression of key brain molecules at crossroads of glucose metabolism and neurotoxicity: possible implications in psychosis

*C. Tomasetti, Naples, Italy
A. de Bartolomeis, F. Iasevoli, G. Latte, R. Rossi*

P-06 POSTER SESSIONS

13.30 – 14.30 h

Foyer

Neurobiology

Chair: C. Höschl, Prague, Czech Republic

P-06-001

White blood cell count in first episode non smoking patients

C. Garcia Rizo, Barcelona, Spain

E. Fernandez-Egea, C. Olivera, M. Bernardo,

B. Kirkpatrick

P-06-002

Influence of acute psychosis on breathing regulation and its impact on heart rate variability

T. Rachow, Jena, Germany

S. Berger, A. K. Israel, K. Bär

P-06-003

Peripheral endothelial dysfunction in patients suffering from acute schizophrenia: a potential marker for cardiovascular morbidity?

A. K. Israel, Jena, Germany

S. Berger, T. Rachow, A. Voss, K. Bär

P-06-004

Catalytic activity of abzymes in patients with schizophrenia with movement disorders was increased

L. Smirnova, Toms, Russia

N. Fattahov

P-06-005

Oxidative and inflammatory status in first-episode psychoses and its relationship with cognitive impairment

M. Martinez-Cengotitabengoa, Vitoria, Spain

A. Ugarte, M. Fernandez, P. Vega, M. Saenz,

I. Zorrilla, A. Gonzalez-Pinto

P-06-006

Methods and composition for modulation of activity of voltage gated ion channels

A. Elayyan, Amman, Jordan

P-06-007

The synesthetic phenomenology in the schizophrenic organization

E. Venga, Naples, Italy

D. Venga

P-06-008

Alterations in hippocampal function in a maternal immune activation animal model of schizophrenia

A. Wolff, Dunedin, New Zealand

D. Dickerson, D. Bilkey

P-06-009

Clozapine administration ameliorates disrupted prefrontal-hippocampal synchrony in an animal model of schizophrenia

D. Dickerson, Dunedin, New Zealand

A. Restieaux, D. Bilkey

P-06-010

Impaired cortical excitability in schizophrenia is related to the disease course – a cross-sectional study

A. Hasan, Göttingen, Germany

B. Rein, M. Herrmann, Y. Heine, S. Heyer, T. Schneider-Axmann, B. Guse, P. Falkai, T. Wobrock

P-07	POSTER SESSIONS
13.30 – 14.30 h	Foyer
Drug treatment II: Basic	
<i>Chair: W. Maier, Bonn, Germany</i>	

P-07-001

In-vivo pharmacological evaluation of novel olanzapine analogues in rat: potential novel antipsychotic drugs with lower obesogenic effect

S. Afari, Wollongong, Australia

F. Fernandez, X.-F. Huang

P-07-002

Neurobehavioral adaptations to steady state dose of haloperidol associated to treatment efficacy and failure

D. Amato, Erlangen, Germany

S. Natesan, L. Yavich, S. Kapur, C. Mueller

P-07-003

Comparative study on animal model of neuroprotection and cardioprotection for long-acting antipsychotics

D. Marinescu, Craiova, Romania

L. Mogoanta, I. Udristoiu, I. Marinescu, M. C. Pirlog, D. Pirici

P-07-004

The effect of cannabidiol in a MK-801-induced rat model of aspects of schizophrenia

A. Gururajan, Melbourne, Australia

D. Taylor, D. Malone

P-07-005

Attention deficit induced by deletion of CB1 cannabinoid receptor is not reversed by haloperidol and risperidone treatment in the prepulse inhibition test

A. Ortega-Alvaro, Albacete, Spain

A. Ternianov, J. Manzanares

P-07-006

T-817MA, a novel neurotrophic agent, prevents loss of GABAergic parvalbumin-positive neurons and sensorimotor gating deficits in rats transiently exposed to MK-801 in the neonatal period

T. Uehara, Toyama, Japan

T. Sumiyoshi, H. Hattori, H. Itoh, T. Matsuoka,

N. Iwakami, M. Suzuki, M. Kurachi

P-07-007

Effects of risperidone on development and expression of nicotine-induced locomotor sensitization in rats

T. Uzbay, Ankara, Turkey

E. Akdag, H. Kayir

P-07-008

Effects of cannabidiol on schizophrenia-like behavioral deficits presented by spontaneously hypertensive rats (shr)

R. Levin, Sao Paulo, Brazil

V. Almeida, M. Calzavara, F. Peres, S. Niigaki,

J. Hallak, A. Zuardi, J. A. Crippa, V. Abilio

P-07-009

New hydroxysulfonamide with analgesic, anticonvulsant and tranquilizer activity

H. Zlenko, Dnipropetrovsk, Ukraine

L. Kasyan, V. Palchikov, I. Prishlyak

W-02 WORKSHOPS

14.30 – 16.00 h Plenary Room

Past, current and future European schizophrenia research projects

*Chairs: W. Gaebel, Düsseldorf, Germany
S. Galderisi, Naples, Italy*

W-02-001

Transition and beyond – findings of the European prediction of psychosis study (EPOS)

*S. Ruhrmann, Cologne, Germany
F. Schultze-Lutter, R. K. Salokangas, D. Linszen,
M. Birchwood, G. Juckel, A. Heinz, S. Lewis,
A. Morrison, J. Klosterkötter*

W-02-002

Novel methods leading to new medications in depression and schizophrenia (NEWMEDS)

A. Reichenberg, London, United Kingdom

W-02-003

European twin study network on schizophrenia (EUTwinsS)

*I. Nenadic, Jena, Germany
H. Sauer*

W-02-004

Genomic variations underlying common behavior diseases and cognition trait in human populations (ADAMS)

A. Papassotiropoulos, Basel, Switzerland

O-04 ORAL PRESENTATIONS

14.30 – 16.00 h Harvard

Drug and other somatic treatments

*Chairs: J. Libiger, Hradec Kralove,
Czech Republic
W. Cahn, Utrecht, The Netherlands*

O-04-001

Comparative assessment of haloperidol and risperidone effect on neuromarkers and endothelium dysfunction indices in patients with the first psychotic episode

*N. Govorin, Chita, Russia
A. Vasilyeva*

O-04-002

Dopamine D2 receptor occupancy with risperidone or olanzapine needed for the maintenance treatment of schizophrenia: a cross-sectional study

*Y. Mizuno, Kawasaki, Japan
R. R. Bies, G. Remington, D. C. Mamo, T. Suzuki,
B. G. Pollock, T. Tsuboi, H. Takeuchi, M. Mimura,
H. Uchida*

O-04-003

Mentalizing skills deficits in schizophrenia as a cue for drug choice? Clozapine vs other antipsychotic profiles on keeping outpatients stable

*R. Duñó, Barcelona, Spain
K. Langohr, D. Palao, A. Tobeña*

O-04-004

Neuroleptic-induced movement disorders: a cross-cultural perspective

E. Pi, Los Angeles, USA

O-04-005

A clinical trial to evaluate the pharmacokinetics, safety and tolerability of single doses of risperidone with the novel long-acting injectable technology ISM® in healthy subjects

*I. Gutierrez, Granada, Spain
M. Farré, J. Martinez-Gonzalez, P. Cordero, F. Martinez-Rodriguez, I. Ayani, F. Fonseca, L. Ochoa, J. L. Pedraz*

O-04-006

Effect of cardiovascular exercise on global brain volumes in patients with schizophrenia and matched healthy controls

*T. Scheewe, Utrecht, The Netherlands
N. van Haren, G. Sarkisyan, T. Takken, H. Hulshoff Pol, F. Backx, R. Kahn, W. Cahn*

S-18	SYMPOSIA
14.30 – 16.00 h	Stanford
Schizophrenia – a mild encephalitis?	
<i>Chairs: K. Bechter, Göttingen, Germany</i>	
<i>N. Müller, Munich, Germany</i>	

S-18-001

The mild encephalitis hypothesis, specified for schizophrenia based on CSF investigation
K. Bechter, Göttingen, Germany

S-18-002

Inflammation in schizophrenia: results from neuropathological studies
B. Bogerts, Magdeburg, Germany

S-18-003

Neuroinflammation in schizophrenia: a PET study
H. C. Klein, Groningen, The Netherlands
J. Doorduyn, R. Dierckx, I. Jonker, E. de Vries

S-18-004

Therapeutic consequences of inflammation in schizophrenia
N. Müller, Munich, Germany

S-19	SYMPOSIA
14.30 – 16.00 h	Princeton
Psychomotor symptoms in schizophrenia	
<i>Chairs: M. Morrens, Wilrijk, Belgium</i>	
<i>B. Sabbe, Wilrijk, Belgium</i>	

S-19-001

Neural correlates of psychomotor functioning in schizophrenia
L. Docx, Wilrijk, Belgium

S-19-002

The impact of negative and depressive symptoms on psychomotor functioning in schizophrenia
M. Morrens, Wilrijk, Belgium

S-19-003

State and trait aspects of section monitoring in schizophrenia
E. de Bruijn, Nijmegen, The Netherlands

S-19-004

The effect of nicotine on cognitive and psychomotor functioning in smoking and non smoking schizophrenic patients
C. Quisenbary, Wilrijk, Belgium

W-03	WORKSHOPS
14.30 – 17.30 h	Yale 2
Writing manuscripts for publication in English language scientific journals: a workshop	
<i>Chair: S. Hodgins, London, United Kingdom</i>	

S-20	SYMPOSIA
16.30 – 18.00 h	Plenary Room
Toxicity of relapse	
<i>Chairs: C. Höschl, Prague, Czech Republic</i>	
<i>M. Birchwood, Birmingham, United Kingdom</i>	

S-20-001
Anatomy of relapse
M. Birchwood, Birmingham, United Kingdom

S-20-002
Disorganisation and its association with progressive brain volume changes in schizophrenia
W. Cahn, Utrecht, The Netherlands
G. Collin, E. Derks, N. van Haren, H. Schnack, H. Hulshoff Pol, R. Kahn

S-20-003
Relapses of schizophrenia and structural changes in the brain
N. van Haren, Utrecht, The Netherlands

S-20-004
ITAREPS: information technology aided relapse prevention programme in schizophrenia
F. Spaniel, Prague, Czech Republic

S-21	SYMPOSIA
16.30 – 18.00 h	Harvard
Co-morbidity of schizophrenia and physical illness	
<i>Chairs: N. Sartorius, Geneva, Switzerland</i>	
<i>W. Gaebel, Düsseldorf, Germany</i>	

S-21-001
Review of evidence concerning co-morbidity of schizophrenia and physical illness
M. de Hert, Kortenberg, Belgium

S-21-002
Excess mortality, causes of death and life expectancy in main groups of patients with recent onset of mental disorders in 2000–2006 in Denmark, Finland and Sweden
M. Nordentoft, Copenhagen, Denmark
K. Wahlbeck, M. Gissler, J. Westman, H. Ali-naghizadeh, T. M. Laursen

S-21-003
Co-morbidity of schizophrenia and physical illness
H. Parmentier, Purley, United Kingdom

S-22	SYMPOSIA
16.30 – 18.00 h	Stanford
Advances in understanding the causes of schizophrenia	
<i>Chairs: R. Mössner, Bonn, Germany</i>	
<i>D. Rujescu, Munich, Germany</i>	

S-22-001

New genetic findings in schizophrenia

D. Rujescu, Munich, Germany

S-22-002

The genetics of sensorimotor gating: a core endophenotype of schizophrenia

B. Quednow, Zurich, Switzerland

S-22-003

Unraveling the pharmacogenomics of schizophrenia

R. Mössner, Bonn, Germany

S-22-004

Imaging genetics in schizophrenia

H. Walter, Berlin, Germany

S-23	SYMPOSIA
16.30 – 18.00 h	Princeton
PREVENT: a multidimensional study of people at risk to develop first episode psychosis – from the metabolic syndrome to the efficacy of CBT	
<i>Chairs: A. Bechdorf, Cologne, Germany</i>	
<i>J. Klosterkötter, Cologne, Germany</i>	

S-23-001

Cortical excitability in people at risk of psychosis

T. Wobrock, Göttingen, Germany

A. Hasan, B. Guse, M. Labusga, K. Levold, A. Bechdorf, J. Klosterkötter, C. Grefkes, J. Cordes, L. Kistorz, B. Janssen, W. Gaebel, P. Falkai

S-23-002

Stress experience and stress sensitivity in subjects at risk for psychosis

M. Wagner, Bonn, Germany

J. Drees, T. Lataster, A. Bechdorf, I. Myin-Germeys

S-23-003

Prevalence of the metabolic syndrome in men and women at risk of psychosis

J. Cordes, Düsseldorf, Germany

K. Kahl, M. Jänner, H. Müller, M. Wagner, W. Maier, M. Lautenschlager, A. Heinz, W. de Millas, B. Janssen, W. Gaebel, M. Michel, F. Schneider, M. Lambert, D. Naber, M. Brüne, S. Krüger-Özgürdal, T. Wobrock, M. Riedel, J. Klosterkötter, A. Bechdorf

S-23-004

Dysfunctional cognitive and emotional empathy in the prodromal phase of schizophrenia

J. Gallinat, Berlin, Germany

C. Montag, Y. Gudlowski

S-24	SYMPOSIA
18.15 – 19.45 h	Harvard
Strength based treatment in an early psychosis ACT team: engaging the troublesome avoiders	
<i>Chairs: B. Jacobsen, Nijmegen, The Netherlands</i>	
<i>M. Elfrink, Nijmegen, The Netherlands</i>	

S-24-001

ACT and recovery – a new perspective on treatment for early psychosis. The first three years: qualitative and quantitative data
M. Elfrink, Nijmegen, The Netherlands

S-24-002

The daily teamwork: what, how, with whom and why
B. Jacobsen, Nijmegen, The Netherlands

S-24-003

ACT approach, substance abuse, psychosis and recovery
M. van Niekerk, Nijmegen, The Netherlands

S-24-004

Medication: on the road to shared decision making
B. Jacobsen, Nijmegen, The Netherlands

S-25	SYMPOSIA
18.15 – 19.45 h	Stanford
Psychotic symptoms in schizophrenia – biological correlates, clinical outcome and therapeutic consequences	
<i>Chairs: R. Schennach-Wolff, Munich, Germany</i>	
<i>C. Mulert, Hamburg, Germany</i>	

S-25-001

Biological causes of psychotic symptoms such as auditory verbal hallucinations (AVH) – DTI and EEG phase coherence results
C. Mulert, Hamburg, Germany

S-25-002

Different patterns of response to psychotic symptoms in schizophrenia patients – implications for clinical practice
M. Jäger, Günzburg, Germany

S-25-003

Occurrence and treatment of residual symptoms in schizophrenia
R. Schennach-Wolff, Munich, Germany
M. Riedel, M. Obermeier, F. Seemueller, M. Jäger, M. Schmauss, G. Laux, H. Pfeiffer, D. Naber, L. G. Schmidt, W. Gaebel, J. Klosterkötter, I. Heuser, W. Maier, M. R. Lemke, E. Rüther, S. Klingberg, M. Gastpar, H.-J. Möller

S-25-004

Metacognitive training – latest results on its efficacy in treating psychotic symptoms in schizophrenia patients
S. Moritz, Hamburg, Germany

O-05 ORAL PRESENTATIONS

18.15 – 19.45 h

Princeton

Psychosocial treatment

Chairs: A. Medalia, New York, USA

D. R. Müller, Bern, Switzerland

O-05-001

Is social cognitive remediation therapy effective in the treatment of schizophrenia patients?

D. R. Müller, Bern, Switzerland

S. J. Schmidt, V. Roder

O-05-002

Mechanisms of functional recovery in Cognitive Remediation Therapy for schizophrenia patients

S. J. Schmidt, Bern, Switzerland

D. R. Müller, V. Roder

O-05-003

Remediation of social cognition deficits in schizophrenia: a proof of concept pilot study using biofeedback

K. McCabe, Darlinghurst, Australia

C. Loughland, T. Lewin, M. Hunter, V. Carr

O-05-004

Cognitive psychotherapy in early psychosis: metacognition and disorders remission

R. Popolo, Rome, Italy

M. Procacci, G. Salvatore, G. Dimaggio

O-05-005

The Opus-trial: Intensive, early, psychosocial intervention versus treatment as usual for first-episode psychosis patients. Results from the 10-year follow-up

R. G. Secher, Copenhagen, Denmark

S. F. Austin, N. P. O. Mors, M. Nordentoft

O-05-006

Day clinic treatment and recovery in patients with schizophrenia

I. Sibitz, Vienna, Austria

M. Lipp

S-26	SYMPOSIA
08.30 – 10.00 h	Plenary Room
Psychosis: psychological therapies and their mechanisms of action	
<i>Chairs: W. Tschacher, Bern, Switzerland</i>	
<i>S. Klingberg, Tübingen, Germany</i>	

S-26-001

Time-series based analysis of integrative psychotherapy of psychosis

W. Tschacher, Bern, Switzerland

F. Ramseyer

S-26-002

The role of Cognitive Behavioral Therapy and Cognitive Remediation for the treatment of negative symptoms

S. Klingberg, Tübingen, Germany

W. Wölwer, C. Engel, A. Wittorf, J. Herrlich, C. Meisner, G. Buchkremer, G. Wiedemann

S-26-003

What are the therapeutic ingredients of cognitive behaviour therapy for psychosis? A systematic review

U. M. Junghan, Bern, Switzerland

M. Pfammatter

S-26-004

CBT in persistent psychotic symptoms affects functioning and suffering

M. van der Gaag, Amsterdam, The Netherlands

S-27	SYMPOSIA
08.30 – 10.00 h	Harvard
First-episode programmes: concepts and proven evidence	
<i>Chairs: M. Birchwood, Birmingham, United Kingdom</i>	
<i>S. Friis, Oslo, Norway</i>	

S-27-001

The EIS-concept in UK and recent findings from the youth-SPACE project

M. Birchwood, Birmingham, United Kingdom

S-27-002

Programma2000 – concept and practical experience

A. Meneghelli, Milan, Italy

A. Cocchi

S-27-003

The TIPS-concept and recent findings

S. Friis, Oslo, Norway

J. O. Johannessen, H. Barder, J. Evensen, U. Haahr, W. ten Velden Hegelstad, I. Joa, J. Langeveld, T. K. Larsen, I. Melle, S. Opjordsmoen Illner, B. Rishovd Rund, J. I. Røssberg, E. Simonsen, K. Sundet, P. Vaglum, T. McGlashan

S-27-004

OPUS: concept and recent findings

M. Nordentoft, Copenhagen, Denmark

G. Secher, M. Bertelsen, A. Thorup, S. Austin, N. Albert, P. Jeppesen, G. Krarup, P. Jorgensen, L. Petersen

S-27-005

Specialised first episode psychosis services: are they worth it?

P. Power, Dublin, Ireland

(Discussant)

S-28	SYMPOSIA
08.30 – 10.00 h	Stanford
Dopaminergic and glutamatergic dysfunction in schizophrenia	
<i>Chairs: A. Heinz, Berlin, Germany</i>	
<i>N.N.</i>	

S-28-001

The influence of risk genes on the glutamate system in schizophrenia: evidence from post-mortem studies

A. Schmitt, Göttingen, Germany
P. Falkai

S-28-002

Functional dysregulations in the language and limbic system as a basis for specific symptoms of schizophrenia

W. Strik, Bern, Switzerland

S-28-003

Dopamine dysfunction and alterations of reward-related learning in schizophrenia

A. Heinz, Berlin, Germany
A. Pankow, A. Beck, F. Schlagenhauf

S-28-004

Dopamine: the final common pathway to psychosis? – New data from the prodrome and chronic schizophrenia

O. Howes, London, United Kingdom

O-06	ORAL PRESENTATIONS
08.30 – 10.00 h	Princeton
Genetics and neurobiology	
<i>Chairs: D. Rujescu, Munich, Germany</i>	
<i>U. Schall, Waratah, Australia</i>	

O-06-001

Rare variants in the schizophrenia-associated microdeletion region on 1q21.1

F. B. Basmanav, Bonn, Germany
A. J. Forstner, R. Breuer, T. Muehleisen, M. Alexander, S. Moebus, R. Mössner, D. Rujescu, M. Rietschel, M. M. Nothen, S. Cichon, M. V. Hollegaard, E. Strengman, F. Degenhardt, A. Borglum, X. Miro, F. Brockschmidt, S. Herms, L. Priebe, E. Janson, V. Nieratschker, M. Ludwig, J. Freudenberg, R. Ophoff, D. M. Hougaard

O-06-002

Gene expression and schizophrenia phenotype in the course of antipsychotic pharmacotherapy

U. Schall, Waratah, Australia
N. Kumarasinghe, P. Rasser, P. Tooney

O-06-003

Gene expression of HERG1, HERG2 and HERG3 isoforms in peripheral blood mononuclear cells of schizophrenia patients

F. Atalar, Istanbul, Turkey
T. T. Acuner, A. Colak, G. Akan, T. A. Tekiner, F. Oncu, D. Yesilbursa, S. Turkcan

O-06-004

BDNF and S100B as biomarkers in schizophrenia spectrum disorders?

N. van de Kerkhof, Venray, The Netherlands
F. van der Heijden, D. Fekkes, W. Verhoeven

O-06-005

Impaired long-term potentiation and long-term depression in schizophrenia: new insights towards reduced neuroplasticity

A. Hasan, Göttingen, Germany
M. Nitsche, B. Rein, M. Herrmann, R. Aborowa, T. Schneider-Axmann, B. Guse, O. Gruber, P. Falkai, T. Wobrock

O-06-006

Association of candidate genes with neuroimaging phenotypes: results from the Hamburg Multidiagnosis Study (HMS)

O. Gruber, Göttingen, Germany
P. Falkai

W-04	WORKSHOPS
10.30 – 12.00 h	Plenary Room
European practice guidelines: a need for hamonisation?	
<i>Chairs: W. Gaebel, Düsseldorf, Germany</i>	
<i>K. Wahlbeck, Helsinki, Finland</i>	

W-04-001

ADAPTE: a systematic approach to cross-cultural and cross-organizational guideline adaptation

J. A. Swinkels, Amsterdam, The Netherlands

W-04-002

Recommendations on pharmacological treatment – recent updates

W. Gaebel, Düsseldorf, Germany

W-04-003

NICE recommendations on psychological treatments – recent updates

E. Kuipers, London, United Kingdom

W-04-004

How much pan-European consensus is necessary?

K. Wahlbeck, Helsinki, Finland

Discussants:

A. Fink-Jensen, Copenhagen, Denmark

A. Gumley, Glasgow, Scotland

J. Libiger, Hradec Králové, Czech Republic

A. Meneghelli, Milan, Italy

R. K. R. Salokangas, Turku, Finland

S-29	SYMPOSIA
10.30 – 12.00 h	Harvard
Understanding minds: a conceptual framework in the research and clinical features of schizophrenia	
<i>Chairs: M. Proccacci, Rome, Italy</i>	
<i>R. Popolo, Rome, Italy</i>	

S-29-001

Theory of mind in at-risk stages of schizophrenia

M. Brüne, Bochum, Germany

S-29-002

Vulnerable self, poor understanding of others' mind, threat anticipation and cognitive biases as triggers for delusional experience in schizophrenia: a theoretical model

G. Salvatore, Rome, Italy

P. H. Lysaker, R. Popolo, M. Proccacci, A. Carcione, G. Dimaggio

S-29-003

Associations of mastery with daily function in schizophrenia

P. Lysaker, Indianapolis, USA

M. Proccacci, A. Carcione, G. Salvatore, R. Popolo, G. Dimaggio

S-29-004

Functional neuroimaging of Theory of Mind (ToM) abilities in patients with schizophrenia

K. Koelkebeck, Münster, Germany

A. Pedersen, J. Bauer, M. Brandt, P. Ohrmann

S-30	SYMPOSIA
10.30 – 12.00 h	Stanford
Early recognition and early intervention: facts and visions	
<i>Chairs: J. Klosterkötter, Cologne, Germany</i>	
<i>E. Meisenzahl, Munich, Germany</i>	

S-30-001

Prediction of psychosis – current state and future directions

S. Ruhrmann, Cologne, Germany

J. Klosterkötter

S-30-002

Prediction of psychosis with neurobiological markers

E. Meisenzahl, Munich, Germany

S-30-003

Neurophysiological paradigms in patients at ultra high risk for developing psychosis

D. Nieman, Amsterdam, The Netherlands

S. Dragt, M. van Tricht, J. Koelman, L. Bour,

E. Velthorst, D. Linszen, L. de Haan

S-30-004

Indicated prevention in people at-risk of psychosis: recent findings

A. Bechdolf, Cologne, Germany

S-31	SYMPOSIA
10.30 – 12.00 h	Princeton
Animal models of schizophrenia between genotype, endophenotype, nongenetic second hit and the disease	
<i>Chairs: R. Wolf, Bochum, Germany</i>	
<i>M. von Wilmsdorff, Düsseldorf, Germany</i>	

S-31-001

Schizophrenia-related behavioral and hippocampal morphological alterations after prenatal kainic acid lesions

M. von Wilmsdorff, Düsseldorf, Germany

M.-L. Bouvier, A. Schmitt, W. Gaebel

S-31-002

The reeler mouse model of schizophrenia: from behavior to proteomics

A. Schmitt, Göttingen, Germany

P. Pilz, D. Martins-de-Souza, M. von Wilmsdorff, P. Falkai

S-31-003

Region-specific alteration of GABAergic markers in the brain of heterozygous reeler mice

S. Nullmeier, Magdeburg, Germany

P. Panther, H. Dobrowolny, H. Schwegler, R. Wolf

S-31-004

Neurodevelopmental disorder in *Srgap3*^{-/-} mice leads to lethal hydrocephalus or 'schizophrenia-related' behaviors

R. Waltereit, Mannheim, Germany

U. Leimer, O. von Bohlen und Halbach, J. Panke,

S. Hölter, L. Garrett, K. Wittig, M. Schneider,

C. Schmitt, J. Calzada-Wack, F. Neff, L. Becker,

C. Prehn, V. Endris, G. Rappold, H. Fuchs, V. Gai-

lus-Durner, J. Adamski, T. Klopstock, I. Esposito,

T. Wieland, W. Wurst, M. Habre de Angelis,

D. Bartsch

PL-03 PLENARY LECTURES

12.15 – 13.00 h Plenary Room

Social cognition in schizophrenia

Chair: S. Galderisi, Naples, Italy

PL-03-001

Social cognition and schizophrenia

M. F. Green, Los Angeles, USA

P-08 POSTER SESSIONS

13.30 – 14.30 h Foyer

Outcome

Chair: M. Birchwood, Birmingham, United Kingdom

P-08-001

Clinical and social correlates of "Duration of Untreated Psychosis" (DUP): results from the Catalan Early Psychosis Specific Intervention Programme (EPSIP)

A. Barajas, Barcelona, Spain
M. San Emeterio, M. Teixido, N. Mantecon,
A. Escudero, E. Conesa, M. Carbonero, M. A. Ar-
gany, E. Sanchez, I. Alvarez, L. Lalucat

P-08-002

Severity of outcome in early psychosis: risk and protective factors in a 7-year retrospective study

S. Ingretoilli, Rome, Italy
D. Pucci, S. Ferracuti, G. Ducci

P-08-003

Predictors of short- and long-term clinical outcome in schizophrenic psychosis – the Northern Finland 1966 birth cohort study

P. Juola, Oulu, Finland
J. Miettunen, J. Veijola, M. Isohanni, E. Jääskel-
äinen

P-08-004

Clinical vs cognitive symptoms as predictors of outcome in psychosis: a longitudinal study

J. Peña, Bilbao, Spain
A. García Guerrero, N. Ojeda del Pozo, M. Alonso
Pinedo, R. Segarra Echevarria, M. Fernández
Hernandez, J. I. Eguiluz Uruchurtu, J. Cartón
Costa, I. Querejeta Ayerdi, M. Gutierrez Fraile

P-08-005

Early psychosis intervention: a recovery-oriented project in South Tyrol

K. Furlato, Bolzano, Italy
M. Perini, S. Doimo, A. Conca, S. Torresani

P-08-006

Key issues in recovering from first episode psychosis: a factor analysis of the Psychosis Recovery Inventory (PRI)

E. Y. Chen, Hong Kong
W. W. Tam, C. L. Hui, M. M. Lam, S. K. Chan,
W. Chang, G. H. Wong

P-08-007

Factors contributing to stigma resistance in patients with schizophrenia

W. Kollmann, Vienna, Austria
M. Amering, B. Schrank, I. Sibitz

P-08-008

The influence of self-stigma on success in work or study among people with schizophrenia

E. Horsselenberg, Assen, The Netherlands
M. Pijnenborg, C. Slooff, J. Arends, A. Aleman

P-08-009

Clinical and social dimensions of disability at schizophrenic spectrum disorders patients with anhedonia: impact on quality of life

N. Orlova, Kiev, Ukraine
M. Shkliar

P-08-010

The ITHACA-Toolkit (German version): validation of an interview manual and toolkit to assess human rights and physical health of residents in psychiatric and social care institutions

H. Zäske, Düsseldorf, Germany
W. Gaebel

P-09	POSTER SESSIONS
13.30 – 14.30 h	Foyer
Neuropsychology I: Basic	
<i>Chair: M. Rapp, Berlin, Germany</i>	

P-09-001

Age at onset and executive function in schizophrenia

A. Holmén, Lørenskog, Norway

M. Juuhl-Langseth, R. Thormødsen, K. Sundet, B. R. Rund, I. Melle

P-09-002

Cognition and functioning of patients with first psychotic episode and relation with the Brain Derived Neurotrophic Factor

M. Martínez-Cengotitabengoa, Vitoria, Spain

B. García-Lecumberri, S. Alberich, I. Gonzalez-Ortega, S. Ruiz de Azúa, P. Lopez, A. Gonzalez-Pinto

P-09-003

Sustained attention and working memory, but not executive function, deficits follow a familial pattern in schizophrenia

S. Giakoumaki, Rethymno, Greece

P. Roussos, E. G. Pallis, P. Bitsios

P-09-004

Impaired top-down processing in schizophrenia in the perception of a hollow mask revealed with fMRT and event-related-potentials

W. Dillo, Hannover, Germany

D. Dima, H. Emrich

P-09-005

Neural correlates of impaired volition in schizophrenia

J. Bender, Berlin, Germany

B. Reuter, C. Kaufmann, N. Kathmann

P-09-006

Mechanisms of prediction in patients with psychosis

R. Lencer, Münster, Germany

A. Sprenger, P. Trillenberg

P-09-007

Impaired pantomime in schizophrenia – association with frontal lobe function

S. Walther, Bern, Switzerland

T. Vanbellingen, S. Bohlhalter

P-09-008

Negative capability: a poetic-based cognitive resource in early psychosis

M. Lanzaro, Scunthorpe, United Kingdom

P-09-009

Data gathering reasoning bias in patients with at-risk mental states: cognitive and poetic techniques

M. Lanzaro, Scunthorpe, United Kingdom

P-09-010

Electrophysiological markers in bipolarity

A. Boxus, Thuir, France

P. Raynaud, C. Palix

P-09-011

Measuring mismatch negativity (MMN) in the rat – methodological considerations for translational studies of schizophrenia

P. Michie, Callaghan, Australia

T. Nakamura, W. Fulham, U. Schall, J. Todd,

T. Budd, D. Hodgson

P-10	POSTER SESSIONS
13.30 – 14.30 h	Foyer
Neuropsychology II: Clinical	
<i>Chair: M. Green, Darlinghurst, Australia</i>	

P-10-001
Differences in the internalizing attributional style of patients with a first episode psychosis depending on their cognitive and insight impairment
J. Peña, Bilbao, Spain
A. García Guerrero, J. García Ormaza, Y. Ballorca Arnaiz, A. Ugarte Ugarte, K. Haidar, L. Martín Otaño, E. Bengoetxea Noreña, M. Gutiérrez Fraile

P-10-002
Neurocognition and social cognition in early prodromal state of psychosis: preliminary results
M. Skuhareuskaya, Minsk, Belarus
N. Khamenka, O. Skugarevsky

P-10-003
Facial emotion recognition in subjects a ultra high risk for psychosis: a review
P. A. Martins, São Paulo, Brazil
P. Gonçalves, L. Monteiro, M. Louza

P-10-004
Mental states at risk of psychosis in youth adult: relationship between cognitive symptoms and basic symptoms
S. Ingretolli, Rome, Italy
C. Cannizzaro, D. Mallardi, F. Mola, G. Ducci, G. Scifoni

P-10-006
The efficacy of Integrated Psychological Therapy (IPT) for middle-aged schizophrenia patients
D. R. Müller, Bern, Switzerland
S. J. Schmidt, V. Roder

P-10-007
Clinical and cognitive outcomes in schizophrenia/psychosis after cognitive remediation with REHACOP
N. Ojeda, Bilbao, Spain
J. Peña, E. Bengoetxea, R. Segarra, P. M. Sánchez, E. Elizagárate, J. García, J. I. Eguiluz, A. García

P-10-008
Effect of cardiovascular exercise on mental and physical health in patients with schizophrenia
T. Scheewe, Utrecht, The Netherlands
A. Kroes, T. Takken, F. Backx, R. Kahn, W. Cahn

P-10-009
Enhancing synaptic plasticity and cognition by aerobic exercise and cognitive training in chronic schizophrenia: design for a randomised controlled trial
B. Malchow, Göttingen, Germany
T. Wobrock, P. Falkai

P-10-010
No effect of aerobic exercise on the amygdala and vermis cerebelli in patients with chronic schizophrenia
B. Malchow, Göttingen, Germany
M. Schnur, F.-G. B. Pajonk, P. Falkai

P-10-011
In schizophrenia requirements of stereopsis misguide foveal fixation of the target of attention
H. Korn, Eichstätt, Germany

P-11	POSTER SESSIONS
13.30 – 14.30 h	Foyer
Psychosocial treatment	
<i>Chair: E. Kuipers, London, United Kingdom</i>	

P-11-001

Processes of therapy in cognitive behavioural therapy for psychosis – a study in progress

M. Wiesjahn, Marburg, Germany

E. Jung, W. Rief, T. M. Lincoln

P-11-002

Predictors for the early therapeutic alliance in cognitive behavioural therapy for psychosis

E. Jung, Marburg, Germany

M. Wiesjahn, T. M. Lincoln

P-11-003

Eagerness to understand illness in adult first-episode psychosis patients

W. Tam, Hong Kong

E. Y. Chen, C. L. Hui, M. M. Lam, S. K. Chan, W. Chang, G. H. Wong

P-11-004

Psychoeducation in schizophrenia – results of a survey of all psychiatric providers in the Czech Republic in 2009

L. Bankovska Motlova, Prague, Czech Republic

E. Dragomirecka, A. Blabolova, F. Spaniel

P-11-005

The influence of psychoeducative family intervention in schizophrenic patients on perceived quality of life

W. Gassmann, Riedstadt, Germany

O. Christ, H. Berger

P-11-006

The effect of family psychoeducational intervention on family burden and patients' quality of life in Iranian outpatients with schizophrenia

M. Shaygan, Shiraz, Iran

F. Sharif

P-11-009

Identification of psychosocial necessities associated with aging in schizophrenia

M. L. Vargas, Segovia, Spain

P. Quintanilla, B. Bega, A. Lozano, J. M. Martinez Sanchez, D. Lopez Gomez, R. Martinez de Benito, C. Fernandez Atienza, M. Lorente Williams, A. de la Calle Sanz

P-11-010

A group treatment protocol for comorbid personality disorder

H. Wolters, Assen, The Netherlands

E. Horsellenberg

P-11-011

Psychological group therapy for panic disorder with or without agoraphobia

J. de Santiago, Barcelona, Spain

M. A. Sánchez

S-32	SYMPOSIA
14.30 – 16.00 h	Plenary Room
Classification of different long term outcomes of psychosis in schizophrenia spectrum – a need for re-conceptualization	
<i>Chairs: M. Nordentoft, Copenhagen, Denmark J. L. Vazquez Barquero, Madrid, Spain</i>	

S-32-001
Biological and social predictors of clinical outcome after the first psychotic episode: findings from the AESOP 10-year follow-up study
P. Dazzan, London, United Kingdom

S-32-002
Quality of life and recovery in psychotic disorders: ten-years follow-up of the TIPS study
*I. Melle, Oslo, Norway
J. Evensen, W. Hegelstad, U. Haahr, J. I. Røssberg, J. O. Johannessen, I. Joa, T. K. Larsen, S. Opjordsmoen, E. Simonsen, K. Sundet, P. Vaglum, S. Friis*

S-32-003
The clinical relevance of the different criteria of "outcome" in psychosis: a critical analysis from the Cantabria First Episode Study
*J. L. Vazquez Barquero, Madrid, Spain
B. Crespo-Facorro, R. Pérez-Iglesias, J. Vázquez-Bourgon*

S-32-004
Differences in course of illness and predictors of bad outcome and recovery in the OPUS I cohort after five and ten years
*R. G. Secher, Copenhagen, Denmark
S. Austin, N. Albert, M. Nordentoft*

S-33	SYMPOSIA
14.30 – 16.00 h	Harvard
Molecular linkage between energy metabolism and oligodendrocyte pathology in schizophrenia	
<i>Chairs: J. Steiner, Magdeburg, Germany A. Schmitt, Göttingen, Germany</i>	

S-33-001
Neurobiology of feeding and energy expenditure
T. L. Horvath, Magdeburg, Germany

S-33-002
Postmortem and PET studies are indicating impaired cerebral glucose metabolism in schizophrenia
*J. Steiner, Magdeburg, Germany
H.-G. Bernstein, B. Bogerts*

S-33-003
Histological studies of oligodendrocytes in psychiatric diseases
*A. Schmitt, Göttingen, Germany
C. Steyskal, S. Strocka, F. Frank, K. Wetzstein, H.-G. Bernstein, J. Steiner, B. Bogerts, P. Falkai*

S-33-004
Impaired biochemical pathways in schizophrenia: a proteomic overview
D. Martins-de-Souza, Cambridge, United Kingdom

S-34	SYMPOSIA
14.30 – 16.00 h	Stanford
Heterogeneity and functional significance of white matter changes in schizophrenia	
<i>Chairs: T. Kasperek, Brno, Czech Republic</i>	
<i>R. Mandl, Utrecht, The Netherlands</i>	

S-34-001

Heterogeneity of diffusion tensor imaging findings in schizophrenia

M. Kyriakopoulos, London, United Kingdom

S-34-002

Methods of white matter tracts integrity investigation

R. Mandl, Utrecht, The Netherlands

S-34-003

Microstructural alterations of the accurate fasciculus are associated with auditory verbal hallucinations in psychotic and in non-psychotic individuals

A. de Weijer, Utrecht, The Netherlands

S-34-004

Multimodal analysis (DTI, fMRI) neurobiological substrates of neurological soft signs in schizophrenia

T. Kasperek, Brno, Czech Republic

J. Rehulová, M. Kerkovský, P. Bednarik

O-07	ORAL PRESENTATIONS
14.30 – 16.00 h	Princeton
Neuropsychology and neuroimaging	
<i>Chairs: W. Wölwer, Düsseldorf, Germany</i>	
<i>S. Kaiser, Zurich, Switzerland</i>	

O-07-001

Verbal memory in first episode schizophrenia – a five year follow-up (TIPS study)

H. E. Barder, Oslo, Norway

K. Sundet, J. O. Johannessen, T. K. Larsen, I. Melle, J. I. Røssberg, B. R. Rund, E. Simonsen, S. Friis, T. McGlashan

O-07-002

Specificity and relevance of planning deficits in schizophrenia

S. Kaiser, Zurich, Switzerland

D. Holt, J. Wolf, K. Rodewald, M. Rentrop, J. Funke, M. Weisbrod

O-07-003

Cognitive identity: a dimensional cognition model for schizophrenia

S. Landgraf, Berlin, Germany

I. Amado, M.-O. Krebs, J.-P. Olié, E. van der Meer

O-07-004

Slowed response initiation in schizophrenia: evidence from lateralized movement-related and attention-related brain potentials

D. Möllers, Berlin, Germany

B. Reuter, N. Kathmann

O-07-005

Egocentric spatial navigation in schizophrenia. Differentiated impairment and challenge-dependent activation of mesiotemporal, retrosplenial and parietal regions

J. Siemerikus, Zurich, Switzerland

E. Irle, C. Schmidt-Samoa, M. Mehlitz, J. Bau-dewig, P. Dechent, G. Weniger

O-07-006

Trust versus paranoia: investigating the neural mechanisms of social reward learning in health and psychosis

P. Gromann, Amsterdam, The Netherlands

S. Shergill, D. Heslenfeld, D. Joyce, A.-K. Fett, L. Krabbendam



German Association
for Psychiatry and
Psychotherapy



PSYCHIATRY CONGRESS BERLIN

► Annual Congress of the German Association for Psychiatry and Psychotherapy
23 – 26 November 2011 // ICC Berlin, Germany

Personalised Psychiatry and Psychotherapy

- Special Sessions with
 - J. Raymond DePaulo Jr.** (Baltimore/ USA)
 - Arno Villringer** (Leipzig, Germany)
 - Wulf Rössler** (Zurich/Switzerland)
 - Niels Birbaumer** (Tübingen, Germany)
 - Günter Wallraff** (Cologne, Germany)
 - Manfred Lütz** (Cologne, Germany)
 - Angaangaq Angakkorsuaq**, Shaman of the Eskimo-Kallallit (Greenland)
- Video-Live-Interviews with
 - Eric Kandel** (New York, USA)
 - Stephen Bergman** (Boston, USA)
- More than 30 CME credits possible
- International Track (english)
- Educational Symposia
- Attendance is free to new members 2011
- Congress Kindergarten

Further information and the complete congress programme is now available at
www.psychiatry-congress-berlin.org



World Psychiatric
Association WPA



European Psychiatric
Association EPA

Beyond Diversity Towards Harmony

20th EUROPEAN CONGRESS OF PSYCHIATRY - EPA 2012

Prague, Czech Republic
3-6 March 2012



SUBMIT YOUR ABSTRACT
Deadline: 5 October 2011

Congress Secretariat:
EPA 2012
c/o Kenes International
1-3, Rue de Chantepoulet
PO Box 1726
CH-1211 Geneva 1, Switzerland
Tel: +41 22 908 0488
Fax: +41 22 906 9140
E-mail: epa@kenes.com

www.epa-congress.org

ACKNOWLEDGEMENTS

ACKNOWLEDGEMENTS

The organisers of the 3rd European Conference on Schizophrenia Research gratefully acknowledge the financial support of the following companies:

Lilly Deutschland GmbH



BioLineRx Ltd.



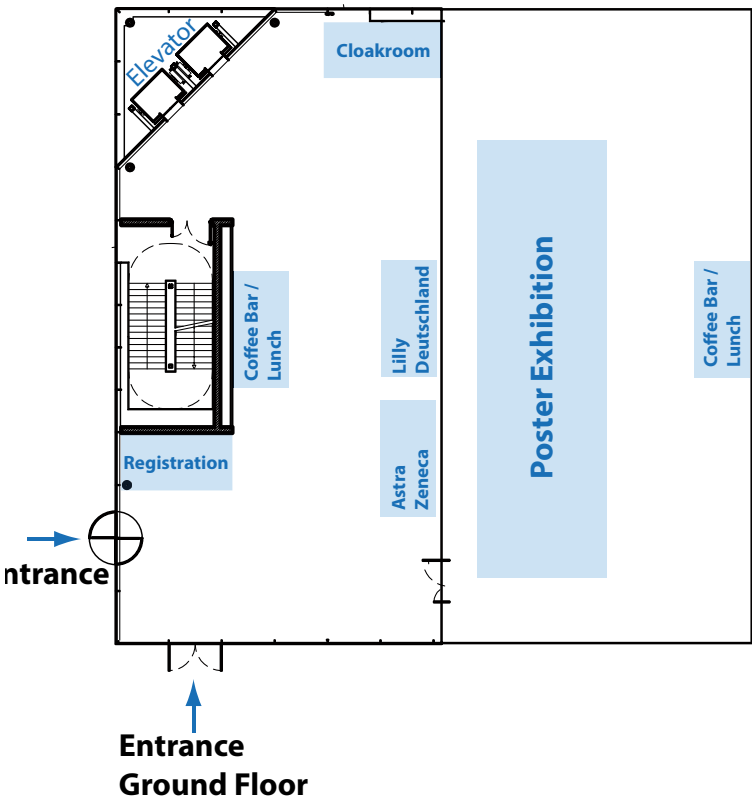
Schattauer GmbH

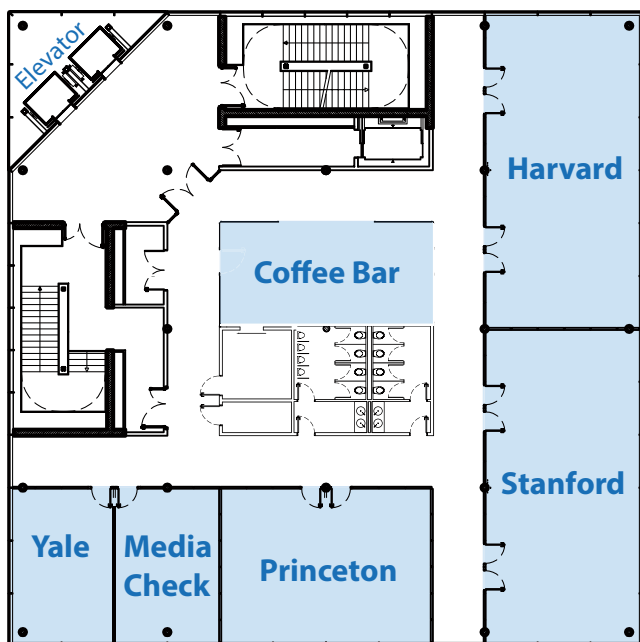


Lehmanns Media

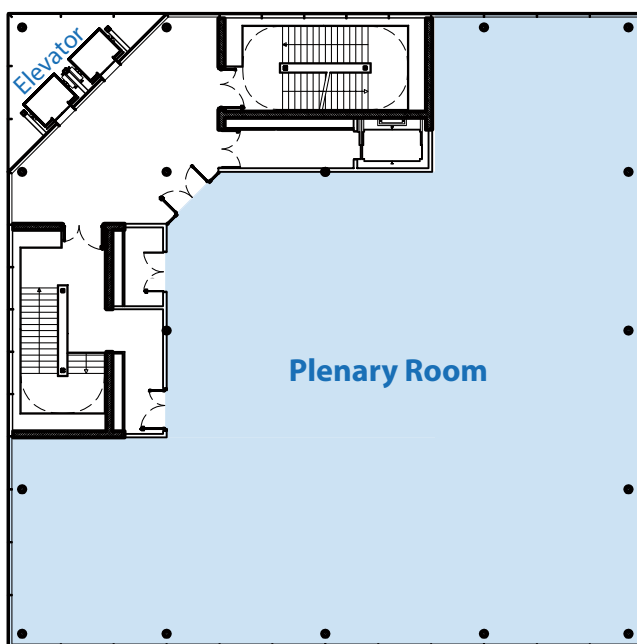


FLOORPLAN





First Floor



Second Floor

INDEX OF CHAIRPERSONS, AUTHORS AND PRESENTERS

A		E		J	
Ajdacic-Gross, V.	23, 25	Elayyan, A.	30	Jablensky, A.	14
Alberich, S.	17	Elfrink, M.	36	Jacobsen, B.	36
Aleman, A.	15, 21	F		Jafari, S.	31
Amato, D.	31	Falkai, P.	14, 20	Jäger, M.	36
Aminoff, S. R.	25	Farre, M.	32	Joukamaa, M.	28
Atalar, F.	39	Feldon, J.	15	Jung, E.	45
Awad, A. G.	23, 28	Fitzgerald, M.	25	Junghan, U. M.	38
B		Foucher, J.	18	Jun, T.	29
Backasch, B.	18	Fowler, D.	22	Juola, P.	42
Bakanidze, G.	29	Friis, S.	38	K	
Bankovska Motlova, L.	45	Frommann, N.	27	Kaiser, S.	47
Barajas, A.	42	Furlato, K.	42	Kalali, A. H.	16, 22
Barder, H. E.	47	G		Kasperek, T.	18, 47
Barrett, E.	14	Gaebel, W.	14, 24, 26, 32, 34, 40, 41	Kayir, H.	17
Basmanav, F. B.	39	Galderisi, S.	24, 32, 42	Kerekes, N.	27
Bebbington, P.	25	Gallinat, J.	25, 35	Kircher, T.	22
Bechdorf, A.	20, 35, 41	Garcia-Lecumberri, B.	43	Kirkpatrick, B.	24
Bechter, K.	33	Garcia Rizo, C.	30	Klein, H. C.	33
Bender, J.	43	Gassmann, W.	45	Klingberg, S.	20, 38
Benito Ruiz, A.	16	Geffen, Y.	22	Klosterkötter, J.	35, 41
Bertoncelli, C.	28	Giakoumaki, S.	43	Koelkebeck, K.	40
Bhugra, D.	26, 28	Gomez, J.-C.	22	Kollmann, W.	42
Birchwood, M.	34, 38, 42	Govorin, N.	32	Koning, J.	23
Bogerts, B.	33	Green, M.	25, 44	Korn, H.	44
Bogojevic, G.	27	Green, M. F.	42	Kozumplik, O.	16
Bouvier, M.-L.	41	Gromann, P.	47	Kuipers, E.	40, 45
Boxus, A.	43	Gruber, O.	20, 39	Kwon, J. S.	15
Broekema, W.	21	Gründer, G.	22	Kyriakopoulos, M.	47
Broich, K.	24	Gururajan, A.	31	L	
Brüne, M.	27, 40	Gutierrez, I.	32	Landgraf, S.	47
C		H		Lanzaro, M.	43
Cabanis, M.	18	Hammer, T. B.	18	Lebedeva, I.	18
Cahn, W.	32, 34	Hartmann, M.	28	Lencer, R.	43
Chen, E. Y.	42	Hasan, A.	30, 39	Levin, R.	31
Cheng, C.	25	Haug, E.	14	Libiger, J.	32
Cordes, J.	35	Heinz, A.	39	Lincoln, T.	22
Cuesta Zorita, M. J.	23	Hellweg, R.	21	Loughland, C.	29
D		Hilker, R.	28	Lysaker, P.	40
Dangellia, A.	17	Hodgins, S.	27, 33	M	
David, A.	21, 25	Holmén, A.	43	Maier, W.	22, 24, 31
Dazzan, P.	46	Horsselenberg, E.	42	Malchow, B.	44
de Bruijn, E.	33	Horvath, T. L.	46	Mandl, R.	47
de Hert, M.	26, 34	Höschl, C.	30, 34	Manikantan, P.	29
de Santiago, J.	28, 45	Howes, O.	15, 39	Marinescu, D.	31
de Weijer, A.	47	I		Marques-Teixeira, F.	18
Dickerson, D.	30	Ingretolli, S.	42, 44	Martinez-Cengo-	
Dillo, W.	43	Isohanni, M.	25	titabengoa, M.	17, 30, 43
Djodjevic, S.	17	Israel, A. K.	30	Martins-de-Souza, D.	20, 46
Docx, L.	33			Martins, P. A.	44
Duñó, R.	32			McCabe, K.	27, 37

Medalia, A.	26, 37
Meier, S.	29
Meisenzahl, E.	15, 41
Melle, I.	14, 46
Meneghelli, A.	38
Meyer, U.	15
Michie, P.	43
Miettunen, J.	28
Mihailescu, A. I.	16
Miskowiak, K.	21
Mizuno, Y.	32
Möller, H.-J.	16, 22, 26
Möllers, D.	47
Moran, P.	15
Moritz, S.	36
Morrens, M.	33
Mössner, R.	35
Mueller, D. R.	37, 44
Mulert, C.	25, 36
Müller, N.	33

N	
Navarrete Rueda, F.	29
Nenadic, I.	32
Nielsen, M.	17
Nieman, D.	41
Nordentoft, M.	14, 34, 38, 46
Nova Bethania, S. C.	17
Nullmeier, S.	41

O	
Ojeda, N.	44
Orlova, N.	42
Ortega-Alvaro, A.	31
Ortuño, F.	18

P	
Papageorgiou, K.	27
Papassotiropoulos, A.	29, 32
Parmentier, H.	34
Pelayo Teran, J. M.	23
Peña, J.	42, 44
Pendlebury, J.	23
Penttilä, M.	27
Petek Eric, A.	17
Pi, E.	32
Pijnenborg, M.	21
Pletnikov, M.	15
Popolo, R.	37, 40
Pose Cabarcos, A.	17
Power, P.	38
Prickaerts, J.	22
Priller, J.	21
Procacci, M.	40
Pujol, N.	18

Q	
Quednow, B.	35
Quisenaeys, C.	33
R	
Rachow, T.	30
Rahim, T.	17
Rapp, M.	24, 43
Rasmussen, H.	16
Reichenberg, A.	24, 32
Rizk, N.	29
Rizos, E.	18
Robert, P. H.	24
Roder, V.	26
Rodgers, S. A.	28
Roesch-Ely, D.	16
Romm, K. L.	27
Ruhrmann, S.	27, 32, 41
Rujescu, D.	25, 35, 39

S	
Sabbe, B.	17, 33
Salokangas, R. K. R.	27
Salvatore, G.	40
Sartorius, N.	14, 23, 34
Schall, U.	39
Scheewe, T.	32, 44
Schennach-Wolff, R.	36
Schlagenhauf, F.	24
Schmidt, S. J.	37
Schmitt, A.	39, 41, 46
Schneider, F.	26
Schulze, T.	20, 25
Secher, R. G.	37, 46
Shaygan, M.	45
Sibitz, I.	37
Siemerker, J.	18, 47
Skuhareuskaya, M.	44
Smirnova, L.	29, 30
Spaniel, F.	34
Steiner, J.	46
Steylen, P.	17, 23
Strik, W.	17, 26, 39
Suazo, V.	18
Swinkels, J. A.	40
Szafrański, T.	16

T	
Tam, W.	45
Tandon, R.	14, 28
Tani, H.	17
Tomasetti, C.	29
Tschacher, W.	28
Turrina, C.	24

U	
Uchida, H.	16
Uehara, T.	31
Uzbay, T.	31
Uzun, S.	16

V	
van de Kerkhof, N.	28, 39
van der Gaag, M.	22, 38
van der Meer, L.	21
van Geert, S.	17, 23
van Haren, N.	34
van Niekerk, M.	36
Vargas, M. L.	45
Vasilyeva, A.	16
Vazquez Barquero, J. L.	46
Venga, E.	30
Verhoeven, W.	28
von Wilmsdorff, M.	41

W	
Waddington, J.	23
Wagner, M.	20, 35
Wahlbeck, K.	40
Waltereit, R.	41
Walter, H.	35
Walther, S.	23, 43
Weiner, I.	15
Wiesjahn, M.	45
Wittorf, A.	20
Wobrock, T.	35
Wolff, A.	30
Wolf, R.	41
Wolters, H.	45
Wölwer, W.	27, 47
Wulff, S.	17
Wüstenberg, T.	21

Z	
Zäske, H.	42
Zlenko, H.	31

CPO HANSER SERVICE is specialist in the field of Conference, Event, Destination and Association Management organizing events of any size throughout Germany and also abroad for more than 25 years.

CPO HANSER[®] SERVICE

CONFERENCE – EVENT – DESTINATION – ASSOCIATION MANAGEMENT

We offer you:

- the best congress organization
- state-of-the-art online solutions
- electronic abstract handling
- CME accreditation handling
- effective congress technology
- sponsoring and exhibition acquisition and management
- finance management
- professional tax solutions
- creative event programs
- inhouse graphic design
- association management

BERLIN

Paulsborner Straße 44
14193 Berlin
fon: +49-30-300 669 0
fax: +49-30-305 73 91
Email: berlin@cpo-hanser.de

HAMBURG

Zum Ehrenhain 34
22885 Barsbüttel
fon: +49-40-670 882 0
fax: +49-40-670 32 83
Email: hamburg@cpo-hanser.de

FRANKFURT

Julius-Reiber-Strasse 15a
64293 Darmstadt
fon: +49-6151-428 368 0
fax: +49-6151-428 368 9
Email: frankfurt@cpo-hanser.de

www.cpo-hanser.de





ZypAdhera® – mit der Depotformulierung von Zyprexa® können Sie Ihren Patienten eine dauerhaft gute Perspektive ermöglichen.

- Zuverlässige Rezidivprophylaxe von Zyprexa® als Depotformulierung¹
- Rascher Wirkeintritt nach der 1. Injektion – ohne orale Zusatzgabe²
- Hohe Flexibilität (individuelle Dosierung und 2- oder 4-wöchiges Injektionsintervall)²

ZypAdhera® – für eine dauerhaft gute Perspektive

1. Kane JM et al. Am J Psychiatry 2010; 167:181–189.

2. ZypAdhera® Fachinformation. Stand August 2010.

ZypAdhera® 210 mg/300 mg/405 mg Pulver und Lösungsmittel zur Herstellung einer Depot-Injektionssuspension.

Wirkstoff: Olanzapinamoat 1 H₂O. **Zusammensetzung:** Jede Durchstechflasche enthält Olanzapinamoat 1 H₂O entsprechend 210 mg/300 mg/405 mg Olanzapin. **Sonstige Bestandteile des Pulvers:** keine. **Lösungsmittel:** Croscarmellose-Natrium, Mannitol, Polysorbat 80, Wasser f. Inj.-zwecke, Salzsäure, Natriumhydroxid. **Anwendungsgebiete:** Erhaltungstherapie bei erwachsenen Patienten mit Schizophrenie, die während einer akuten Behandlung hinreichend mit oralem Olanzapin stabilisiert wurden. **Gegenanzeigen:** Überempfindlichkeit gegen Olanzapin od. sonstigen Bestandteil; bekanntes Risiko Engwinkelglaukom. **Nebenwirkungen:** bei <0,1% der Injektionen und ca. 2% der Studienpatienten Postinjektionssyndrom mit Symptomen wie bei Olanzapin-Überdosierung, meist innerhalb 1 Std. nach Injektion, selten zw. 1–3 Std., sehr selten nach 3 Std.; klin. Symptome u. a.: Sedierung (leicht bis Koma) u./od. Delirium (einschl. Verwirrtheit, Desorientiertheit, Agitation, Angst, andere kognitive Beeinträchtigungen), extrapyramidale Symptome, Sprachstörungen, Ataxie, Aggression, Schwindel, Schwäche, Hypertonie, Krampfanfälle. In klin. Studien mit Olanzapinamoat: Nebenwirk. an Injektionsstelle ca. 8%, Schmerzen, zudem knötchenartige, erythematige, ödemartige, nicht spezifische Reaktionen, Irritationen, Bluterguss, Hämorrhagie u. Taubheitsgefühl. Sedierung, Schläfrigkeit, Gewichtszunahme, erhöhte Plasmaphosphat Spiegel (gelegentlich damit zusammenhängende Amenorrhoe, Gynäkomastie, Galaktorrhoe, Brustvergrößerungen, häufig erektile Dysfunktion, erniedrigte Libido). In Studien mit Olanzapin oral: bei Pat. mit Demenzbedingter Psychose höhere Inzidenz an Todesfällen u. zerebrovaskulären Ereignissen, sehr häufig abnormer Gang, Erbrechen. Verschlechterung der Parkinson-Symptome u. Halluzinationen bei Parkinsonscher Erkrankung. Sprachstörungen (bei gleichzeitiger Gabe mit Lithium od. Valproat), Eosinophilie. In klin. Prüfung b. gleichzeit. Behandlung mit Valproat Neutropenie. Zunahme des Appetits, erhöhte Glukose-, Triglycerid- u. Cholesterinspiegel, Glukosurie, Schwindel, Akathisie, Parkinsonismus, Dyskinesie, Orthostatische Hypotonie, anticholinerge Effekte (einschließt. Verstopfung u. Mundtrockenheit). Bes. zu Behandlungsbeginn vorübergehende asymptomatische Erhöhungen der Lebertransaminasen, Ausschlag, Asthenie, Ödeme, Müdigkeit. Bei älteren Pat. mit Demenz: Pneumonie, erhöhte Körpertemp., Lethargie, Erythem, visuelle Halluzinationen, Haminkontinenz, Lichtüberempfindlichkeitsrkt., allergische Reaktion, Alopecie. Leukopenie, Thrombozytopenie, Neutropenie, Kreatinphosphokinase, Gesamtbilirubin, alkalische Phosphatase erhöht, Bradykardie, QTc-Verlängerung, ventrikuläre Tachykardie/Fibrillation, plötzlicher Tod. Hepatitis (einschl. hepatozellulärer od. cholestatischer Leberschädigung od. Mischform), Krampfanfälle, meist m. Krampfanfällen in Anamnese od. Risikofaktoren, Entwicklung od. Verschlechterung eines Diabetes, gelegentl. begleitet von Ketoacidose oder Koma, einschließt. letale Fälle, Hypothermie, Malignes neuroleptisches Syndrom (MNS), Dystonie (einschl. Blickkrämpfen), tardive Dyskinesie. Thromboembolien einschl. Lungenembolien u. tiefer Venenthrombose, Pankreatitis, Rhabdomyolyse, Priapismus, Haminkontinenz, Schwierigkeiten beim Wasserlassen. Absetzsymptome mit Schwinden, Schlaflosigkeit, Zittern, Angst, Übelkeit, Erbrechen. Langzeitgabe (> 48 Wochen): Anteil Pat. mit signif. Veränderungen folgender Parameter nahm zu: Gewichtszunahme, Glukose, Gesamt/LDL/HDL-Cholesterin, Triglyceride. **Warnhinweise und Vorsichtsmaßnahmen:** Nur zur tiefen intramuskulären, glutealen Anwendung. Nicht intravenös od. subkutan anwenden. Vor Injektion in med. Einrichtung Feststellung, dass Pat. sich nicht alleine zu Zielort begibt. Nach jeder Injektion Pat. für mind. 3 Std. auf Symptome einer Olanzapin-Überdosierung beobachten. Pat. bei jeder Gabe über Möglichkeit eines Postinj.-Syndroms informieren. Hyperglykämie/Lipide: angemessene ärztliche Überwachung in Übereinstimmung mit den gebräuchlichen Therapielichtlinien für Antipsychotika ist ratsam; Pat. mit Diabetes od. Risikofaktoren für Diabetesentwicklung: regelmäßige Überwach. d. Glukoseeinstellung. Plötzl. Herztod wurde berichtet. Nicht zugelassen für Behandlung von Psychosen u./od. Verhaltensstörungen bei Pat. mit Demenz; Mortalität u. Risiko zerebrovaskulärer Zwischenfälle in klin. Studien in dieser Pat.-gruppe erhöht. Siehe auch Warnhinweise u. Vorsichtsmaßnahmen f. die Anwendung in der Fachinformation. **Dosierung, Art und Dauer der Anwendung:** Einzelheiten siehe Fachinformation. **Verschreibungspflichtig.** **Handelsformen:** N1 u. Krankenhauspackungen. **Pharmazeutischer Unternehmer:** Eli Lilly Nederland B.V., Grootslag 1–5, NL-3991 RA Houten, Niederlande. **Ansprechpartner in Deutschland:** Lilly Deutschland GmbH, Niederlassung Bad Homburg, Werner-Reimers-Straße 2–4, 61352 Bad Homburg, Internet: www.lilly-pharma.de. **Stand: August 2010.** DEZYA00267

ZYPAdhera®
Pulver und Lösungsmittel zur Herstellung
einer Depot-Injektionssuspension
Für eine dauerhaft gute Perspektive

Lilly

