

6th European Conference on Schizophrenia Research (ECSR)

Advancing Research – Promoting Recovery

organized by the European Scientific Association
on Schizophrenia and other Psychoses (ESAS)

14 – 16 September 2017
Berlin, Germany

FINAL PROGRAMME

The European Accreditation Committee in CNS (EACIC) has
granted **23 CME credits** to this congress.



The ECSR is organized in cooperation with the

World Psychiatric Association (WPA)
and its Section on Schizophrenia



Asian College of Schizophrenia
Research (ACSR)



European Psychiatric Association (EPA)
and its Section on Schizophrenia



Competence Network
on Schizophrenia (CNS)



German Association for Psychiatry, Psy-
chotherapy and Psychosomatics (DGPPN)



TABLE OF CONTENT

	Page
Welcome Address	3
Conference Organisation	4
Format Descriptions / CME Credits	5
Opening Ceremony and Networking Reception	6
Overview Scientific Programme	7
Scientific Programme	
Thursday, 14 September 2017	10
Friday, 15 September 2017	20
Saturday, 16 September 2017	32
Conference Information	42
Floor Plan and Poster Area	45
Index Chairpersons, Authors and Presenters	48

Get the free Congress App for your smartphone



Quickly find your way through the most up-to-date congress schedule of scientific sessions

- Stop carrying around piles of paper. Just take the congress with you, wherever and whenever you want!
- Mark your favourite sessions and personalise your experience.
- Access vital information around the congress.



The ECSR 2017 APP is powered by GLOBIT GmbH in cooperation with esanum GmbH.

Further information is given

<http://www.schizophrenianet.eu/congress-app/>





Dear Colleagues,

As Congress President and on behalf of the Scientific Committee and the organisers, I cordially welcome you to the 6th European Conference on Schizophrenia Research. The conference is guided by the motto **"Advancing Research – Promoting Recovery"**.

In recent years there is a growing interest in the concept of "recovery" and the implementation of a respective strength-based and goal-striving therapeutic approach. Not least this is a response to the fact, that it is recovery that matters most to our clients and not mere symptom remission. Accordingly recovery-orientation basically requires a co-operative attitude of professionals towards their patients and – at many places – a significant re-organisation of services. Though there are different kinds of definitions and models of recovery (e.g. stage and task models), a considerable number of research programmes accompanied the development of recovery-oriented services, and tested the effectiveness of respective interventions. As Robert Drake stated in a review published in 2014 "...the proliferation of definitions, models, and research on recovery (makes) it vitally important to examine the data to disentangle the evidence from the rhetoric."

The ECSR 2017 intends to contribute exactly to this process of evaluating the evidence, and tries to identify the active ingredients of such interventions and services. Moreover, plenary and state-of-the-art lectures are devoted to potentials and limitations of recovery relating to facilitating and limiting factors discussed under a neurobiological, therapeutical or conceptual perspective. Yet despite growing evidence and efforts to disseminate the recovery-concept and to implement respective person-centred programmes and services it is obvious that many people with schizophrenia (and other severe mental illnesses) still live in a manner inconsistent with recovery – the high rates of unemployment may serve as just one example. Thus, there is an urgent need for further collaborative efforts to enhance recovery and for a critical appraisal of current initiatives in order to identify persistent challenges and barriers to achieve the intended improvements.

The ECSR 2017 will be an ideal platform to present new data and findings of research concerning the complex issue of recovery and beyond. I cordially invite you to join us and participate in this exciting event.

Sincerely yours,

A handwritten signature in black ink, appearing to read 'W. Gaebel'.

Wolfgang Gaebel
Congress President and
President of the European Scientific Association
on Schizophrenia and other Psychoses

CONFERENCE ORGANISATION

SCIENTIFIC ORGANISER



www.esasnet.eu

SCIENTIFIC SECRETARIAT

Wolfgang Gaebel, Wolfgang Wölwer,
Viktoria Toeller
c/o Department of Psychiatry and Psychotherapy
Heinrich-Heine-University Düsseldorf

The ECSR is organised in cooperation with the



World Psychiatric Association
(WPA) and its Section
on Schizophrenia



European Psychiatric
Association (EPA) and its
Section on Schizophrenia



German Association for
Psychiatry, Psychotherapy
and Psychosomatics (DGPPN)



Asian College of Schizophrenia
Research (ACSR)



Competence Network on
Schizophrenia (CNS)

PROFESSIONAL CONFERENCE ORGANISER



Hanser & Co GmbH
Postfach 12 21
22882 Barsbüttel, Germany
Phone: +49-40-670 88 20
Fax: +49-40-670 32 83
Email: schizophrenia@cpo-hanser.de

SCIENTIFIC PROGRAMME COMMITTEE

Wolfgang Gaebel, Germany
Silvana Galderisi, Italy
Oliver Howes, UK
Joachim Klosterkötter, Germany
Bernard Sabbe, Belgium
Werner Strik, Switzerland
Wulf Rössler, Switzerland
Wolfgang Wölwer, Germany

ADVISORY PROGRAMME COMMITTEE

George Awad, Canada
Dinesh Bhugra, UK
Gerd Buchkremer, Germany
George Christodoulou, Greece
Peter Falkai, Germany
Wagner F. Gattaz, Brazil
Birte Glenthoj, Denmark
Philippe Gorwood, France
Heinz Häfner, Germany
Cyril Höschl, Czech Republic
Valery Krasnov, Russia
Shôn Lewis, UK
Jan Libiger, Czech Republic
Wolfgang Maier, Germany
Mario Maj, Italy
Stephen Marder, USA
Patrick McGorry, Australia
Andreas Meyer-Lindenberg, Germany
Hans-Jürgen Möller, Germany
Merete Nordentoft, Denmark
Sir Michael Owen, UK
Victor Peralta, Spain
Norman Sartorius, Switzerland
Frank Schneider, Germany
Masatoshi Takeda, Japan
Pichet Udomratn, Thailand

The scientific programme will comprise the following formats:

LECTURES

Invited lectures of 45 min each, covering current hot spots in schizophrenia research and given by leading international experts.

STATE-OF-THE-ART LECTURES

The state-of-the-art lectures will provide a comprehensive update on current knowledge in the respective field. These lectures will be delivered by top European schizophrenia experts and will last 45 minutes.

SYMPOSIA

Pre-arranged and submitted symposia of 90 min each, including four presentations and 15 min time for discussion covering major topics of the conference. Both symposia that are rather research oriented and those with a more clinical focus will be included.

PRO AND CON DEBATES

During the pre-arranged 90-minutes debates current controversial issues will be introduced and discussed. One moderator and two discussants (pro and con) will raise interactive and lively debates.

ORAL PRESENTATION SESSIONS

Submitted presentations grouped by topics into thematic oral sessions of 90 min, including six papers each.

POSTER SESSIONS

Submitted presentations grouped by topics into thematic guided poster sessions.

CME ACCREDITATION

The European Accreditation Committee in CNS (EACIC) has granted **23 CME credits** to this congress. Participants requesting CME credits are required to complete the online evaluation form on the EACIC website www.eacic.eu.



Please follow the below steps to receive your CME certificate.

1. Go to the EACIC website www.eacic.eu
2. Click on the CME logo (in the blue bar on the right hand side of the webpage)
3. Choose the option "I am already registered" or "I am not registered"
4. Log on or register
5. Choose the option 1 "I want to evaluate an accredited event"
6. Choose the event for which you would like to receive CME credits
7. Complete the online evaluation form
8. Press "save"
9. Your CME certificate will be automatically emailed to the address provided

The deadline to complete the evaluation form is **16 November 2017**.

European Accreditation Committee in CNS (EACIC)

47, avenue Jacques Pastur
1180 Brussels, Belgium
www.eacic.eu

OPENING AND NETWORKING RECEPTION

THURSDAY, 14 SEPTEMBER 2017

Opening Ceremony

11:30 – 12:15

Plenary, 2nd Floor

► Presidential Address

Professor Wolfgang Gaebel, Düsseldorf, Germany
Congress President, President of the European Scientific Association
on Schizophrenia and other Psychoses
Advancing Research – Promoting Recovery

► Aretaeus-Award Ceremony – Laureate 2017

Networking Reception

18:00 – 19:30

Foyer, Ground Floor

At the end of the scientific sessions participants are invited to join the Networking Reception for informal conversation with colleagues in the Foyer of the Dahlem Cube. Finger food and drinks will be provided.



Room Time	Plenary 2nd Floor	Harvard 1st Floor	Stanford 1st Floor	Princeton 1st Floor	Foyer Ground Floor
09.30 – 11.00	S-01 Vocational rehabilitation in schizophrenia: a case of one-size-fits all or custom-tailoring? The Job Management program (JUMP) – nurturing the IPS concept	S-02 How patients with schizophrenia remember and narrate personal life events? New insight on psychopathology and cognitive interventions related to autobiographical memory	S-03 The natural course of movement disorders in long-stay psychiatric patients: the Curaçao Extrapyramidal Syndromes study and the Dutch replication study	S-04 Uncovering immune pathways in schizophrenia – a multidisciplinary approach	Registration Counter Opening Hours: 08.00 – 18.00
	Coffee Break				
11.30 – 12.15	Opening Ceremony				
12.15 – 13.00	PL-01 Recovery – realistic goal or wishful thinking? A neuroscientists's view				
13.00 – 14.30	Lunch Break Guided Poster Tours P-01 to P-04 Foyer/Event Area, Ground Floor				
14.30 – 16.00	SA-01-001 Conceptualizing schizophrenia from the beginning – an epidemiological perspective SA-01-002 Brain-imaging in psychosis	S-05 Migration and psychosis	S-06 Focus on recovery-limiting psychopathological dimensions in schizophrenia: electrophysiological and brain imaging correlates of negative symptoms and disorganization	O-01 Factors impacting the risk of developing psychosis	
	Coffee Break				
16.30 – 18.00	D-01 Cannabis: causal or not?	S-07 Optimizing the path to recovery in treatment-resistant and difficult-to treat schizophrenia: challenges and alternatives	S-08 Biological diagnostic markers for schizophrenia	O-02 Psychopathology and comorbidity	
18.00 – 19.30	Networking Reception Foyer/Event Area, Ground Floor				

PL-Plenary Lecture

SA-State-of-the-Art Lecture

S-Symposium

O-Oral Presentation

D-Debate

Room Time	Plenary 2nd Floor	Harvard 1st Floor	Stanford 1st Floor	Princeton 1st Floor	Foyer Ground floor
	S-09 Prevention of schizophrenic and other psychoses – activities for implementation in Europe	S-10 Formal thought disorder in schizophrenia – phenomenology and imaging correlates	S-11 Glutamatergic alterations in central nervous system disorders: a role for cognitive dysfunctions	S-12 Autoimmune encephalitis and mild encephalitis	Registration Counter Opening Hours: 08.00 – 18.00
08.30 – 10.00					
	Coffee Break				
10.30 – 12.00	D-02 Antipsychotics are not the mainstay of schizophrenia treatment under long-term conditions	S-13 Delusions: from understanding causal mechanisms to deriving novel psychological interventions	S-14 Glutamate dysfunction in psychosis	O-03 Drug and rTMS treatment	
12.15 – 13.00	PL-02 Genomics and the nature of schizophrenia				
13.00 – 14.30	Lunch Break Guided Poster Tours P-05 to P-08 Foyer/Event Area, Ground Floor				
14.30 – 16.00	SA-02-001 Prevention of psychosis – current achievements and future challenges SA-02-002 Fighting stigma – advancing recovery	S-15 Deconstructing schizophrenia?	S-16 Update on schizophrenia motor symptoms	S-17 Auditory hallucinations: converging evidence from neuroimaging	
	Coffee Break				
16.30 – 18.00	S-18 Negative symptoms: research perspectives and implications for recovery	S-19 Symptom dimensions in schizophrenia brain correlates and personalised treatment options	S-20 Altered inference about relevance in psychosis – computational approaches	O-04 Psychosocial treatment and mental health care	

PL–Plenary Lecture
 SA–State-of-the-Art Lecture
 S–Symposium
 O–Oral Presentation
 D–Debate

Room Time	Plenary 2nd Floor	Harvard 1st Floor	Stanford 1st Floor	Princeton 1st Floor	Foyer Ground floor
08.30 – 10.00	S-21 Exercise interventions in schizophrenia – a novel tool for promoting recovery and disentangling underlying pathophysiology	S-22 What can we offer long-term inpatients with psychosis: do's and don'ts regarding the treatment and quality of life	S-23 Reinforcement learning alterations and dopamine dysfunction in psychosis	O-05 Neuroimaging	Registration Counter Opening Hours: 08.00 – 16.00
	Coffee Break				
10.30 – 12.00	SA-03-001 Pharmacological therapies for schizophrenia – recent advances and future perspectives SA-03-002 Psychological interventions for promoting recovery	S-24 Negative symptoms – bridging basic research and clinical application	S-25 Neurocognitive mechanisms underlying working memory impairments in schizophrenia: new directions	S-26 First episode psychosis: factors that influence burden and outcome	
12.15 – 13.00	PL-03 Early intervention: the next stage				
13.00 – 14.30	Lunch Break Guided Poster Tours P-09 to P-12 Foyer/Event Area, Ground Floor				
14.30 – 16.00	S-27 Offspring of parents with psychosis: perinatal indicators of risk and resilience	S-28 The role of stressful life events and stress markers in children and adolescents with psychosis or at high risk for psychosis	S-29 Paranoia – potential vulnerability factors under the spotlight	O-06 Neurobiology	

PL-Plenary Lecture
 SA-State-of-the-Art Lecture
 S-Symposium
 O-Oral Presentation
 D-Debate

S-01	SYMPOSIA
09:30 – 11:00	Plenary
Vocational rehabilitation in schizophrenia: a case of one-size-fits all or custom-tailoring? The Job Management program (JUMP) – nurturing the IPS concept	
<i>Chairs: J. Ullevoldsæter Lystad, Oslo, Norway H. Bull, Oslo, Norway</i>	

S-01-001

Cognitive remediation, cognitive behavioral therapy and occupational outcome in schizophrenia: a 2 year follow-up study

J. Ullevoldsæter Lystad, Oslo, Norway

S-01-002

The impact of apathy on vocational and social functioning in persons with schizophrenia spectrum disorders. A two year follow-up

H. Bull, Oslo, Norway

T. Ueland, J. U. Lystad, S. Evensen, E. W. Martinsen, E. Falkum

S-01-003

Cost-effectiveness of a vocational rehabilitation program for individuals with schizophrenia in a high-income society

S. Evensen, Oslo, Norway

T. Wisløff, J. Lystad, H. Bull, E. Martinsen, T. Ueland, E. Falkum

S-01-004

Vocational rehabilitation for individuals with schizophrenia – should competitive work be the only goal

E. Falkum, Oslo, Norway

S-02	SYMPOSIA
09:30 – 11:00	Harvard
How patients with schizophrenia remember and narrate personal life events? New insight on psychopathology and cognitive interventions related to autobiographical memory	
<i>Chairs: F. Berna, Strasbourg, France C.J. Herold, Heidelberg, Germany</i>	

S-02-001

Autobiographical memory deficits in schizophrenia – just another cognitive deficit? Evidence from clinical and neuroimaging studies

C. J. Herold, Heidelberg, Germany

J. Schröder, M. M. Lässer

S-02-002

Exploring self-disorders and delusions in schizophrenia: new insights from autobiographical memory research

F. Berna, Strasbourg, France

R. Evrard, R. Coutelle, H. Kobayashi, V. Laprévote, J.-M. Danion

S-02-003

What do patients with schizophrenia tell us about their life and how? Exploration of narrative identity through patients' life stories

M. Allé, Aarhus, Denmark

J.-M. Danion, F. Berna

S-02-004

Advances in cognitive therapeutic interventions in schizophrenia: the use of autobiographical inputs

J. J. Ricarte, Albacete, Spain

J. M. Latorre

S-03	SYMPOSIA
09:30 – 11:00	Stanford
The natural course of movement disorders in long-stay psychiatric patients: the Curaçao Extrapyramidal Syndromes study and the Dutch replication study	
<i>Chairs: P. R. Bakker, Amersfoort, The Netherlands</i>	
<i>P. van Harten, Maastricht, The Netherlands</i>	

S-03-001

The effect of antipsychotic type and dose changes on dyskinesia and parkinsonism in patients with a Serious Mental Illness (SMI) The Curacao Extrapyramidal Syndromes study XII

C. Mentzel, Amersfoort, The Netherlands
R. Bakker, G. Matroos, H. Hoek, M. Drukker, J. van Os, P. van Harten, M. Tijssen

S-03-002

The course and treatment of drug-induced tremors

P. R. Bakker, Amersfoort, The Netherlands
C. Mentzel, J. van Os, M. van den Oever, G. Matroos, H. Hoek, M. Drukker, M. Tijssen, P. van Harten

S-03-003

The incidence and the course of tardive dyskinesia and tardive dystonia in patients with severe mental illness; a 9-year follow-up study

P. van Harten, Maastricht, The Netherlands

H. Hoek, G. Matroos, J. van Os

S-03-004

Movement disorders and mortality in patients with severe mental illness; a 24-year follow-up study

A. E. Willems, Amersfoort, The Netherlands

S-04	SYMPOSIA
09:30 – 11:00	Princeton
Uncovering immune pathways in schizophrenia – a multidisciplinary approach	
<i>Chairs: M. Morrens, Antwerp, Belgium</i>	
<i>S. Erhardt, Stockholm, Sweden</i>	

S-04-001

Brain immune dysregulation in schizophrenia: postmortem findings

J. Steiner, Magdeburg, Germany
H.-G. Bernstein, B. Bogerts

S-04-002

Brain immune dysregulation in schizophrenia – what is the evidence from PET studies?

S. Cervenka, Stockholm, Sweden

S-04-003

Are the brain immune dysregulations in schizophrenia state-dependent?

M. Morrens, Antwerp, Belgium

S-04-004

Brain immune dysregulation in schizophrenia – findings in plasma and CSF

S. Erhardt, Stockholm, Sweden
S. Cervenka, L. Farde, L. Flyckt, H. Fatouros Bergman, F. Orhan, L. Schwieler, G. Engberg

OPENING CEREMONY

11:30 – 12:15	Plenary
► Presidential Address	
► Aretaeus-Award Ceremony	

PL-01	PLENARY LECTURES
12:15 – 13:00	Plenary
Recovery – realistic goal or wishful thinking? A neuroscientists's view	
<i>Chair: W. Gaebel, Düsseldorf, Germany</i>	

PL-01-001

Recovery – realistic goal or wishful thinking? A neuroscientists's view

A. Meyer-Lindenberg, Mannheim, Germany

P-01	POSTER SESSIONS
13:30 – 14:30	Foyer, Ground Floor
Diagnosis and epidemiology	
Chair: F. Schultze-Lutter, Bern, Switzerland	

P-01-003

Dispensing of antipsychotic medication among 400,000 migrants in the Netherlands

F. Termorshuizen, Leiden, The Netherlands
J.-P. Selten, E. R. Heerdink

P-01-004

Clozapine and concomitant medications: setting the record straight

A. Wheeler, Meadowbrook, Australia
K. Murphy, I. Coombes, V. Moudgil, S. Patterson

P-01-005

Very early and early onset schizophrenia spectrum disorders – diagnostic challenge

A. Ciubara, Galati, Romania
O. Hanut, M. C. Pirlog, M. Mutica, A. B. Ciubara

P-01-006

General fertility rate in non-affective psychosis: routine data-linkage from a North-East Scotland community sample

A. MacBeth, Edinburgh, United Kingdom
P. McSkimming, S. Bhattacharya, S. Barry, D. St. Clair,
J. Park, A. Gumley

P-01-007

Schizophrenia in sociocultural area of Siberia

L. Rakhmazova, Tomsk, Russia
M. Berezovskaya, T. Korobitsina

P-01-008

Psychotic experiences in Thailand: results from the 2013 Thai National Mental Health Survey

S. Supanya, London, United Kingdom
T. T. Mental Health Survey Working Group, C. Morgan,
U. Reininghaus

P-01-010

Epidemiological profile of newly admitted patients in psychiatry

R. Jouini, Tunis, Tunisia
M. Karoui, L. Robbana, N. Mhedhbi, T. Nsibi, I. Chaari,
K. Ben Salah, F. Ellouze, F. Mrad

P-01-011

The life narrative analysis on schizophrenic patients: a qualitative study

S. Mohammadi Kalhori, Tehran, Iran
K. Abolmaali

P-02 POSTER SESSIONS

13:30 – 14:30 Event Area, Ground Floor

Drug and alternative treatment 1

Chair: S. Dollfus, Caen, France

P-02-001

Effects of risperidone and olanzapine on indices of weight and fatty component of body composition of patients with schizophrenia

E. Kornetova, Tomsk, Russia

V. Dubrovskaya, A. Kornetov, O. Lobacheva, S. Ivanova, A. Semke, S. Andreev

P-02-003

Extrapyramidal side effects in elderly schizophrenic patients

M. Mutica, Galati, Romania

A. Ciubara, D. Alexandru, M. C. Pirlog

P-02-004

Association between serum glutamate and BDNF levels and response of schizophrenia patients to clozapine treatment

M. Taler, Petach-Tikva, Israel

A. Krivoy, A. Weizman

P-02-005

Cardiotoxicity associated with clozapine; a potent hypothesis of immunomodulation by clozapine: a case report

E. Rizos, Athens - Haidari, Greece

C. Gerasimou, A. Douzenis, C. Papageorgiou

P-02-006

A randomised, double-blind, placebo-controlled study to assess cardiac effects of single-dose BI 409306 in healthy male volunteers

C. Völk, Ingelheim am Rhein, Germany

F. Müller, C. Veau, C. Dansirikul, J. Link, C. Schultheis, R. Laszlo, G. Wunderlich, M. Sand, J. M. Steinacker

P-02-007

Prevention of relapse in schizophrenia: a phase II study evaluating efficacy, safety, and tolerability of oral BI 409306

M. Sand, Ridgefield, USA

D. Brown, D. Walling, K. Daniels, J. McGinniss

P-02-008

The influence of 3 weeks of antipsychotic treatment on cell adhesion molecules in drug naive patients with schizophrenia spectrum disorder

F. Fathian, Bergen, Norway

R. A. Kroken, Ø. Bruserud, W. W. Fleischhacker, R. Gjes-tad, E.-M. Løberg, S. Reitan, M. Rettenbacher, V. Steen, S. Skrede, E. Johnsen

P-02-009

First episode of schizophrenia under antipsychotic treatment is followed by recovery of monoamine oxidase activity but not the degree of endogenous intoxication

M. Uzbekov, Moscow, Russia

V. Brilliantova, S. Shikhov, A. Shmukler

P-02-010

Psychopathology and differentiated psychopharmacological treatment strategy in subtypes of 22q11.2 deletion syndrome

W. M. A. Verhoeven, Venray, The Netherlands

J. I. M. Egger, N. de Leeuw

P-02-011

New 1,5-benzodiazepin-2-ones with anticonvulsant and tranquilizer activity

V. Palchykov, Dnipro, Ukraine

A. Gaponov, R. Chabanenko, I. Sypko, S. Mykolenko, A. Puhach

P-02-012

Pitfalls of managing schizophrenia

M. F. Jabir, Singapore, Singapore

S. Zachariah

P-03	POSTER SESSIONS
13:30 – 14:30	Event Area, Ground Floor
Outcome and stigma	
Chair: A. Mucci, Naples, Italy	

P-03-001

Predictors of remission in late-life schizophrenia: a 5-year follow-up study in a Dutch psychiatric catchment area

*S. Lange, Amsterdam, The Netherlands
B. Penninx, D. Rhebergen, P. D. Meesters*

P-03-002

Predictors of remission in the acute treatment of first-episode schizophrenia involuntarily hospitalized and treated with an algorithm-based pharmacotherapy: secondary analysis of an observational study

*B. Yoshimura, Miyakojima, Japan
S. Sakamoto, M. Takaki, N. Yamada*

P-03-003

The time-course of negative symptoms and their relationships with social functioning and quality of life of first episode schizophrenia patients: a prospective 11 – 15 year follow-study

*K. Golébiewska, Poznań, Poland
K. Gorna, J. Kiejda, B. Grabowska-Fudala, J. Jaracz, P. Wojciak, A. Suwalska, R. Szpalik, K. Jaracz*

P-03-004

A description of physical health outcomes in a first episode psychosis cohort over 20 years

*D. O’Keeffe, Dublin, Ireland
R. Doyle, A. Kelly, A. Sheridan, K. Madigan, E. Lawlor, C. Behan, M. Clarke*

P-03-005

The financial crisis in Greece and the impact on psychiatric patients

*M. Fiste, Chaidari Athens, Greece
E. Neroutsos, P. Bakaouka, E. Bisbiki, K. Kalesiou, E. Kontomina*

P-03-006

Burden of disease for caregivers of individuals with schizophrenia

*M. C. Pirlog, Craiova, Romania
M. Mutica, A. Ciubara, A. L. Chirita, I. Udristoiu*

P-03-007

Psychosocial functioning of families and anti-relapse behaviour in schizophrenia

*E. Gutkevich, Tomsk, Russia
A. Semke, V. Lebedeva, S. Vladimirova*

P-03-008

Stigma experiences in first-episode patients with schizophrenia: do they erode self-esteem in the long-term?

*H. Zäske, Düsseldorf, Germany
W. Gaebel*

P-03-009

Effects of psychological skills training on family stigma in schizophrenia

F. Shamsaei, Hamedan, Iran

P-03-010

Impact and differences of perceived course of illness on desire for social distance towards people suffering from schizophrenia or depression in Hanoi, Vietnam

*L. K. Martensen, Berlin, Germany
E. Hahn, M. Dettling, G. Schomerus, M. H. Nguyen, C. T. Duc, T. M. Tam Ta*

P-03-011

An ongoing trial for recovery-oriented and co-productive reform of academic schizophrenia research society: a challenge of the Japanese Society of Schizophrenia Research

*M. Fukuda, Maebashi, Gunma, Japan
S.-i. Niwa, T. Murai, K. Kasai, A. Kanehara, S. Kanata, Y. Kumakura, Y. Okazaki*

P-04 POSTER SESSIONS

13:30 – 14:30 Event Area, Ground Floor

Neuropsychology

Chair: D. Freeman, Oxford, United Kingdom

P-04-001

Cognitive dysfunctions in schizophrenia and bipolar disorder in Chilean patients

A. Ruiz, Santiago, Chile

M. Martínez, A. Soto, E. Miranda

P-04-002

Proverb comprehension deficits in patients suffering from schizophrenia spectrum disorders – neurocognitive and social cognitive correlates

D. Roesch Ely, Heidelberg, Germany

C. Bach, M. Mohnke

P-04-003

Semantic fluency as a compensatory mechanism indicator in healthy subjects with high genetic loading for schizophrenia

S. N. Kim, Seoul, Republic of Korea

T. Y. Lee, Y. J. Kang, Y. B. Kwak, J. S. Kwon

P-04-004

Language lateralization and attention impairment in young adults with ultra-high risk for psychosis: a dichotic listening study

I. Aase, Stavanger, Norway

K. Kompus, J. Gisselgård, I. Joa, J. O. Johannesen, K. Brønnick

P-04-005

Individuals with subclinical persecutory delusions show impaired adaptation after being exposed to a volatile environment

K. Wellstein, Zurich, Switzerland

A. O. Diaconescu, M. Bischof, A. Rüesch Ranganadan,

K. E. Stephan

P-04-006

Neurocognition and psychotic symptoms in patients with first-episode psychosis: a preliminary study

R. Vila-Badia, Sant Boi de Llobregat, Spain

A. Butjosa, N. Del Cacho, E. Amarfil, E. Rubio-Abadal,

I. Riera-López de Aguilera, L. Portoles, A. Royo

P-04-007

Do cognitive deficits in early-onset of schizophrenia are more severe than in adulthood-onset schizophrenia after many years of psychosis?

B. Hintze, Warsaw, Poland

P-04-008

The effect of cueing on bottom-up biases during working memory encoding in schizophrenia

C. Barnes, Frankfurt am Main, Germany

L. Rösler, M. Schaum, D. Macht, B. Peters, J. Mayer,

M. Wibral, A. Reif, R. Bittner

P-04-009

Cognitive characteristics of homicide offenders with schizophrenia

K. N. Engelstad, Drammen, Norway

B. R. Rund, A.-K. Torgalsbøen, A. Vaskinn

SA-01 STATE-OF-THE-ART LECTURES

14:30 – 16:00 Plenary

State-of-the-Art Lectures 1

Chair: R. M. Murray, London, United Kingdom

SA-01-001

Conceptualizing schizophrenia from the beginning – an epidemiological perspective

W. Rössler, Zurich, Switzerland

SA-01-002

Brain-imaging in psychosis

E. Meisenzahl, Düsseldorf, Germany

S-05 SYMPOSIA

14:30 – 16:00 Harvard

Migration and psychosis

Chairs: J.-P. Selten, Leiden, The Netherlands

A. Meyer-Lindenberg, Mannheim, Germany

S-05-001

Migration and psychosis: a new meta-analysis

J.-P. Selten, Leiden, The Netherlands

F. Termorshuizen, O. Warmerdam, E. van der Ven

S-05-002

A sociodevelopmental pathway to psychosis: update and challenges

C. Morgan, London, United Kingdom

S-05-003

Cultural distance and psychosocial disempowerment account for excess psychosis risk in ethnic minorities: findings from the EU-GEI study

H. Jongsma, Cambridge, United Kingdom

J. Kirkbride, C. Morgan, P. Jones

S-05-004

Neural mechanisms of migration-associated risk for schizophrenia

A. Meyer-Lindenberg, Mannheim, Germany

S-06	SYMPOSIA
14:30 – 16:00	Stanford
Focus on recovery-limiting psychopathological dimensions in schizophrenia: electrophysiological and brain imaging correlates of negative symptoms and disorganization	
<i>Chairs: A. Mucci, Naples, Italy</i>	
<i>T. Koenig, Bern, Switzerland</i>	

S-06-001

Avolition and functional connectivity of the VTA

A. Mucci, Naples, Italy

G. M. Giordano, M. Stanziano, M. Papa, A. Prinster,

A. Soricelli, S. Galderisi

S-06-002

Avolition domain of negative symptoms: electrophysiological correlates

T. Koenig, Bern, Switzerland

G. M. Giordano, A. Vignapiano, A. Mucci

S-06-003

Relationship between persistent negative symptoms and findings of neurocognition and neuroimaging in schizophrenia

A. Üçok, Istanbul, Turkey

S-06-004

Disorganization and cognitive dysfunctions in schizophrenia: resting EEG findings

A. Vignapiano, Naples, Italy

T. Koenig, A. Mucci, G. M. Giordano, A. Amodio, G. Di

Lorenzo, C. Niolu, M. Altamura, A. Bellomo, S. Galderisi

O-01	ORAL PRESENTATIONS
14:30 – 16:00	Princeton
Factors impacting the risk of developing psychosis	
<i>Chair: I. Melle, Oslo, Norway</i>	

O-01-001

Clinical high risk symptoms and criteria in the community: prevalence, clinical significance and risk factors for their occurrence

F. Schultze-Lutter, Bern, Switzerland

B. G. Schimmelmann, C. Michel

O-01-002

The role of parenting and family functioning in the development of psychotic experiences in adolescence (TRAILS)

L. Steenhuis, Groningen, The Netherlands

A. Bartels-Velthuis, C. Hartman, A. Aleman, M. Pijnenborg, M. Nauta

O-01-003

Autism spectrum disorder and risk for psychosis: a psychiatric case register study in the Netherlands

R. Schalbroeck, The Hague, The Netherlands

H. Bos, F. Termorshuizen, J.-P. Selten

O-01-004

Green space – a novel risk decreasing mechanism for schizophrenia?

K. Engemann, Aarhus, Denmark

C. B. Pedersen, C. Tsirogiannis, J.-C. Svenning

O-01-005

Negative symptom interventions in youth at risk of psychosis: a systematic review and network meta-analysis

D. Devoe, Calgary, Canada

A. Peterson, J. Addington

O-01-006

Early detection of people at risk for severe mental illness – identifying, screening, monitoring

E. Sportel, Assen, The Netherlands

N. Boonstra, J. Wigman, R. Bruggeman, G. Pijnenborg,

A. Wunderink

D-01 PRO AND CON DEBATES

16:30 – 18:00

Plenary

Cannabis: causal or not?

Chair: A. Aleman, Groningen, The Netherlands

D-01-001

Pro: Cannabis: causal or not?

R. M. Murray, London, United Kingdom

D-01-002

Con: Cannabis: causal or not?

J. MacLeod, Bristol, United Kingdom

S-07 SYMPOSIA

16:30 – 18:00

Harvard

Optimizing the path to recovery in treatment-resistant and difficult-to-treat schizophrenia: challenges and alternatives

Chairs: M. Isohanni, Oulu, Finland

E. M. Grasa, Barcelona, Spain

S-07-001

Treatment-resistant and difficult-to-treat schizophrenia as a challenge for clinical practices. Data from Finnish samples: Northern Finland birth cohort 1966 and perfect project

J. Seppälä, Kotka, Finland

A. Seppälä, M. Isohanni, J. Miettunen, E. Jääskeläinen

S-07-002

Predictors of response in treatment-resistant schizophrenia: a meta-analysis

A. Seppälä, Oulu, Finland

J. Miettunen, M. Isohanni, A. Ahmed, E. Grasa, I. Corripio, H. Koponen, J. Seppälä, E. Jääskeläinen

S-07-003

Predictors of functioning improvement in difficult-to-treat schizophrenia

K. Farkas, Budapest, Hungary

U. Zsolt

S-07-004

mRESIST, an innovative m-health tool addressed to improve humanistic burden in difficult-to-treat schizophrenia

I. Corripio, Barcelona, Spain

S-08	SYMPOSIA
16:30 – 18:00	Stanford
Biological diagnostic markers for schizophrenia	
<i>Chairs: C. Korth, Düsseldorf, Germany</i>	
<i>O. Howes, London, United Kingdom</i>	

S-08-001

Dopamine and glutamate biomarkers of treatment response and resistance in schizophrenia
O. Howes, London, United Kingdom

S-08-002

Proteomic methods identify early biomarkers of psychosis in young people: opportunities for early detection and illness prevention
S. Sabherwal, Dublin, Ireland
D. Cotter, G. English, G. Cagney, M. Focking

S-08-003

Reverse translation: defining 30% of schizophrenia patients by markers identified in a transgenic rat model for schizophrenia
C. Korth, Düsseldorf, Germany

S-08-004

Translational approaches targeting the Neuregulin-ERBB4 pathway in schizophrenia
M. Rossner, Munich, Germany

O-02	ORAL PRESENTATIONS
16:30 – 18:00	Princeton
Psychopathology and comorbidity	
<i>Chair: B. Sabbe, Duffel, Belgium</i>	

O-02-001

Relationship between emotional and reasoning schemata about self and others and type of attenuated psychotic symptoms in a sample of child and adolescents at clinical high risk for psychosis
A. Sintes-Estevez, Barcelona, Spain
J. Tor-Fabra

O-02-002

The impact of age on the prevalence of attenuated psychotic symptoms in patients of an early detection service
F. Schultze-Lutter, Bern, Switzerland
C. Michel, B. G. Schimmelmann, D. Hubl

O-02-003

Metacognitive beliefs in severe mental disorders
T. Østefjells, Oslo, Norway
I. Melle, R. Hagen, J. I. Røssberg

O-02-004

A deeper view of insight in schizophrenia: insight dimensions, unawareness and misattribution of particular symptoms and its relation with psychopathological factors
E. Pousa, Barcelona, Spain
S. Ochoa, J. Cobo, J. Usall, C. Garcia-Ribera, A. I. Ruiz, C. Domenech

O-02-005

A double dissociation between two phenotypes of psychosis: periodic Catatonia and Cataphasia
J. Foucher, Strasbourg, France
Y. Zhang, M. Roser, O. Mainberger, J. Lamy, P. L. de Sousa, S. Weibel, P. Vidailhet, F. Berna

O-02-006

Metabolic screening in difficult to engage outpatients
D. Cohen, Heerhugowaard, The Netherlands
E. van der Ploeg

S-09	SYMPOSIA
08:30 – 10:00	Plenary
Prevention of schizophrenic and other psychoses – activities for implementation in Europe	
<i>Chairs: J. Klosterkötter, Cologne, Germany</i>	
<i>P. Fusar-Poli, London, United Kingdom</i>	

S-09-001

The Clinical High Risk state for psychosis (CHR-P): challenges and future implementations

P. Fusar-Poli, London, United Kingdom

S-09-002

EPA guidance on the early detection of CHR states

F. Schultze-Lutter, Bern, Switzerland

on behalf of the EPA early detection writing group

S-09-003

EPA guidance on the early intervention of CHR states

S. J. Schmidt, Bern, Switzerland

S-09-004

EPA survey on the early detection and intervention programs

N. Maric, Belgrade, Serbia

A. Riecher-Rössler, S. Andric Petrovic, A. Raballo,

M. Rojnic-Kuzman, J. Klosterkötter

S-10	SYMPOSIA
08:30 – 10:00	Harvard
Formal thought disorder in schizophrenia – phenomenology and imaging correlates	
<i>Chairs: S. Walther, Bern, Switzerland</i>	
<i>A. Nagels, Marburg, Germany</i>	

S-10-001

Clinical dimensions of formal thought disorder and functional neuroimaging

A. Nagels, Marburg, Germany

T. Kircher

S-10-002

The clinical utility of a dimensional and longitudinal evaluation of formal thought disorder in early psychosis

E. Roche, Dublin, Ireland

M. Clarke, J. Lyne

S-10-003

Resting state perfusion patterns linked to formal thought disorder dimensions and longitudinal outcome

K. Stegmayer, Bern, Switzerland

W. Strik, S. Walther

S-10-004

White matter microstructure and formal thought disorder in schizophrenia spectrum disorders

P. Viher, Bern, Switzerland

S-11	SYMPOSIA
08:30 – 10:00	Stanford
Glutamatergic alterations in central nervous system disorders: a role for cognitive dysfunctions	
<i>Chairs: F. Calabrese, Milan, Italy</i>	
<i>J. R. Homberg, Nijmegen, The Netherlands</i>	

S-11-001

Glutamatergic animal models of schizophrenia: focus on impaired cognitive flexibility

A. Nikiforuk, Krakow, Poland

S-11-002

Evidence for glutamatergic dysfunction and cognitive impairment in mice hypomorphic for the schizophrenia susceptibility gene neuregulin-1

C. O'Tuathaigh, Cork, Ireland

S-11-003

Involvement of the glutamatergic system in the activation of local protein synthesis during a cognitive performance: influence of chronic stress exposure

F. Calabrese, Milan, Italy

P. Brivio, G. Racagni, M. Papp, M. A. Riva

S-11-004

Inherited serotonin transporter down-regulation is associated with hyperexcitability: implications for sensory processing sensitivity

J. R. Homberg, Nijmegen, The Netherlands

D. Schubert

S-12	SYMPOSIA
08:30 – 10:00	Princeton
Autoimmune encephalitis and mild encephalitis	
<i>Chairs: K. Bechter, Günzburg, Germany</i>	
<i>S. Najjar, New York, USA</i>	

S-12-001

Testing for a diagnosis of encephalitis in psychiatric disease

D. Brown, Darlinghurst, Australia

S-12-002

Antineuronal antibodies against neurotransmitter receptors and synaptic proteins in schizophrenia

J. Steiner, Magdeburg, Germany

S-12-003

Mild encephalitis concept-exemplified also in chronic case of 25 years

K. Bechter, Günzburg, Germany

S-12-004

Seronegative autoimmune encephalitis presenting as isolated psychosis: role of blood brain barrier hyperpermeability in autoimmune psychosis and schizophrenia

S. Najjar, New York, USA

D-02	PRO AND CON DEBATES
10:30 – 12:00	Plenary
Antipsychotics are not the mainstay of schizophrenia treatment under long-term conditions	
<i>Chair: W. Strik, Bern, Switzerland</i>	

D-02-001

Pro:

Antipsychotics are not the mainstay of schizophrenia treatment under long-term conditions
O. Howes, London, United Kingdom

D-02-002

Con:

Antipsychotics are not the mainstay of schizophrenia treatment under long-term conditions
H.-J. Möller, Munich, Germany

S-13	SYMPOSIA
10:30 – 12:00	Harvard
Delusions: from understanding causal mechanisms to deriving novel psychological interventions	
<i>Chairs: T. Lincoln, Hamburg, Germany</i> <i>D. Freeman, Oxford, United Kingdom</i>	

S-13-001

Incautious reasoning bias as a putative psychological mechanism in the development of delusions in daily life: an experimental experience sampling study
U. Reininghaus, Maastricht, The Netherlands

S-13-002

Paranoia in adolescents attending mental health services: a longitudinal study of factors predicting paranoia persistence
J. Bird, Oxford, United Kingdom

S-13-003

Threat appraisals in people with psychotic experiences
E. Peters, London, United Kingdom

S-13-004

Psychophysiological adaptability in the formation of delusions – can biofeedback reduce symptoms?
A. Clamor, Hamburg, Germany
T. Lincoln

S-14	SYMPOSIA
10:30 – 12:00	Stanford
Glutamate dysfunction in psychosis	
<i>Chairs: M. Sand, Ridgefield, USA</i>	
<i>P. McGuire, London, United Kingdom</i>	

S-14-001

Hippocampal glutamate levels associated with transition to psychosis in people at ultra-high risk

P. McGuire, London, United Kingdom

M. G. Bossong, P. Allen, M. Azis, C. Samson, B. Quinn, I. Bonoldi, G. Modinos, O. D. Howes, J. Stone

S-14-002

Brain glutamate levels and antipsychotic response in schizophrenia

A. Egerton, London, United Kingdom

K. Merritt, G. McQueen, O. Howes, A. Demjaha, S. Brugger, G. Barker, J. Stone, P. Dazzan, B. Broberg, N. van Haren, R. Kahn, B. Glenthøj, P. McGuire

S-14-003

Hippocampal hyperactivity in the MAM schizophrenia model is driven by abnormal stress-induced glutamate drive

A. A. Grace, Pittsburgh, USA

S. F. Sonnenschein, F. V. Gomes

S-14-004

Functional magnetic resonance spectroscopy in patients with schizophrenia and bipolar affective disorder

J. Stone, London, United Kingdom

L. Jelen, S. King

O-03	ORAL PRESENTATIONS
10:30 – 12:00	Princeton
Drug and rTMS treatment	
<i>Chair: M. Isohanni, Oulu, Finland</i>	

O-03-001

Closing the gap: research advances helps to overcome unmet needs in therapy-resistant schizophrenia

D. Cohen, Heerhugowaard, The Netherlands

O-03-002

Is treatment-resistant schizophrenia categorically distinct from treatment-responsive schizophrenia? A systematic review

A. Gillespie, London, United Kingdom

R. Samanaite, J. Mill, A. Egerton, J. MacCabe

O-03-003

Predicting relapse and outcome in first episode psychosis; treatment strategies and negative symptoms

A. Wunderink, Leeuwarden, The Netherlands

J. van Bèbber, S. Sytema, N. Boonstra, H. Wigman

O-03-004

Clinical and functional outcome after antipsychotic discontinuation in functionally recovered first-episode non-affective psychosis patients: a 3 year follow-up study

J. Mayoral-van Son, Torrelavega, Spain

V. Ortiz-García de la Foz, T. Moreno Calle, O. Martínez-García, B. Crespo-Facorro

O-03-005

Efficacy of high-frequency neuronavigated rTMS in auditory verbal hallucinations: a double-blind controlled study in patients with schizophrenia

S. Dollfus, Caen, France

C. Nathou, M. Rémi, O. Etard

O-03-006

Associations between morphological factors of the brain and efficacy of repetitive transcranial magnetic stimulation treatment in patients with schizophrenia

C. Kos, Groningen, The Netherlands

L. Bais, J.-B. C. Marsman, S. Koops, J. Dlabac-de Lange, R. Knegtering, I. E. Sommer, M.-J. van Tol, A. Aleman

PL-02	PLENARY LECTURES
12:15 – 13:00	Plenary
Genomics and the nature of schizophrenia	
Chair: E. Meisenzahl, Düsseldorf, Germany	

PL-02-001

Genomics and the nature of schizophrenia

M.J. Owen, Cardiff, United Kingdom

P-05	POSTER SESSIONS
13:30 – 14:30	Foyer, Ground Floor
Risk factors	
Chair: E. Peters, London, United Kingdom	

P-05-001

Resilience and risk, mental health and well-being: how do these concepts relate?

F. Schultze-Lutter, Bern, Switzerland

S. J. Schmidt

P-05-002

15-year stability of transition risks to psychosis in ultra high individuals at the oasis: the hidden role of pretest risk enrichment

E. Palombini, London, United Kingdom

P. Fusar-Poli, I. Bonaldi, P. McGuire, D. Oliver, C. Davies

P-05-003

Cognitive and perceptual basic symptoms in the community and their association with age

F. Schultze-Lutter, Bern, Switzerland

B. G. Schimmelmann, C. Michel

P-05-004

Relation between the duration of untreated psychosis (DUP) and negative symptoms

R. Vila-Badia, Sant Boi de Llobregat, Spain

E. Amarfil, A. Butjosa, N. Del Cacho, G. Ledesma,

M. Coromina, J. Cuevas, M. Pardo, M. Dolz Abadía,

J. Usall

P-05-005

Schizotypy and childhood trauma as suicidal risk factors in a non-clinical sample

K. Kocsis-Bogar, Vienna, Austria

L. Bürger, K. Hennig-Fast

P-05-006

Gender differences in childhood trauma in patients with first-episode psychosis and healthy controls: a preliminary study

A. Butjosa, Sant Boi Del Llobregat, Spain

R. Vila-Badia, N. Del Cacho, I. Riera-López de Aguilera,

E. Amarfil, D. Muñoz, M. M. Ainoa Álvarez, C. Saltó,

S. Ochoa, J. Usall

P-05-007

Association between childhood trauma and suicide risk in patients with first episode psychosis

I. Riera López de Aguilera, Barcelona, Spain

A. Butjosa, R. Vila Badia, N. Del Cacho, E. Amarfil,

D. Muñoz Samons, N. Grases Miret, M. Pardo, J. Usall

P-05-008

Effects of seizures and obstetrical traumas on individuals with schizophrenia

M. C. Pirlog, Craiova, Romania

I. Marinescu, D. Marinescu

P-05-009

The effects of sleep disturbance in severe mental disorders

J. F. Laskemoen, Oslo, Norway

C. Simonsen, O. Andreassen, I. Melle, I. Aase

P-05-010

Defining depot of imagination and its role in the prevention of schizophrenia

A. Dogra, Noida, India

P-05-011

Schizophrenia is frequently not primary cerebral disorder

N. Ilankovic, Belgrade, Serbia

A. Ilankovic

P-06	POSTER SESSIONS
13:30 – 14:30	Event Area, Ground Floor
Psychopathology and comorbidity	
Chair: S. Walther, Bern, Switzerland	

P-06-001

Insight into negative symptoms in patients with schizophrenia

O. Papsuev, Moscow, Russia

L. Movina, M. Minyaycheva, L. Luther, I. Gladyshev, I. Gurovich

P-06-002

Do hallucinations predict paranoia or vice versa? Results from two ambulatory assessment studies

B. Schlier, Hamburg, Germany

T. Lincoln

P-06-003

Psychotic symptoms in suicide attempt in first psychotic episode: a case-control study

M. Casanueva Fernández, Godella, Valencia, Spain

E. Aguilar, P. Soldevila-Matías, E. Lorente, O. Sparano-Ros, C. González-Vivas, J. Sanjuan

P-06-004

Self-misidentification in the mirror: two clinical cases of a rare syndrome

J. Cardoso, Lisbon, Portugal

A. Aleixo, I. Ganhão, R. Durval

P-06-005

Knowledge, attitude and prevalence of eating disorders in adolescent females in an all-girls secondary school in Lagos mainland local government

J. Amuta, Surulere, Nigeria

P-06-006

Comorbidity of physical disorders among patients with severe mental illness with and without substance use: a systematic review

I. Onyeka, Oslo, Norway

M. C. Høegh, B. Nwaru, E. Eien, I. Melle

P-06-007

Medical conditions of hospitalized patients with chronic schizophrenia – cross-sectional and longitudinal data

C. Duval, Heidelberg, Germany

C. J. Herold, M. M. Lässer, J. Schröder

P-06-008

Adjustment disorders of the schizoid spectrum in patients with Hodgkin's lymphoma

D. Vybornykh, Moscow, Russia

L. Olexenko, S. Khrushchev

P-06-009

Cardiac medication, antidiabetic and lipid-lowering drug prescriptions among antipsychotic drug users in Poland

P. Zagodzón, Gdansk, Poland

P-06-011

Arachnoid cyst in patient with schizophrenia: a case report

R. Jouini, Tunis, Tunisia

M. Karoui, L. Robbana, N. Mhedhbi, T. Nsibi, I. Chaari,

K. Ben Salah, F. Ellouze, F. Mrad

P-07 POSTER SESSIONS

13:30 – 14:30 Event Area, Ground Floor

Drug and alternative treatment 2

Chair: J. Schröder, Heidelberg, Germany

P-07-001

Usefulness of paliperidone palmitate in a home treatment team in reducing symptoms and preventing hospitalization

D. Corcoles, Barcelona, Spain

J. Leon, A. Malagon, A. Gonzalez, M. Bellsola, V. Charvarria, B. Samsó, L. Alba, V. Perez, L. M. Martin

P-07-002

Conditions of use of three-month paliperidone palmitate in a Valencia sample: a naturalistic descriptive study

R. Silvia, Dénia, Spain

Á. Laura, B. Francisco

P-07-003

Clozapine in Dutch ambulatory care: prescription rates and proportions of patients with an indication for this drug

Y. van der Zalm, Leidschendam, The Netherlands

J.-P. Selten

P-07-004

Qualitative analysis of clozapine non-response patterns in a long-term naturalistic setting

T. Kaspárek, Brno, Czech Republic

R. Bartecek, J. Horinkova

P-07-005

Antipsychotics and schizophrenia

M. Fiste, Chaidari Athens, Greece

P. Kaloutsou, C. Andronoglou, E. Neroutsos

P-07-006

Psychosis and H. Pylori

M. Fiste, Chaidari Athens, Greece

E. Neroutsos, P. Aristotelidis, A. Roupaka, P. Bakaouka

P-07-007

Influencing brain networks with 1 Hz rTMS treatment in patients with schizophrenia and auditory verbal hallucinations

L. Bais, Groningen, The Netherlands

E. Liemburg, A. Vercammen, R. Bruggeman, H. Knegtering, A. Aleman

P-07-008

The effect of age on treatment response to tDCS in patients with schizophrenia: a meta-regression analysis

T. Y. Lee, Seoul, Republic of Korea

J. Lee, K.-I. Kevin Cho, S. N. Kim, J. S. Kwon

P-07-009

Reduction of apathy in schizophrenia after tDCS: a case study

L. van Asperen, Groningen, The Netherlands

C. Kos, L. Bais, N. Klaasen, R. Knegtering, A. Aleman

P-07-010

Effects of trans-cranial direct current stimulation on catatonic symptoms of schizophrenia

K. Shoaib Ahmed, Quetta Balochistan, Pakistan

M. U. Mari, M. Ilyas

P-07-011

MyPilot – an app development project to augment treatment in psychosis and bipolar disorder

K. L. Romm, Oslo, Norway

S. Aminoff, E. Barrett, L.-C. Berentzen, E. Gardsjord,

K. Gjermundsen, C. Simonsen, T. G. Værnes, I. Melle

P-08 POSTER SESSIONS

13:30 – 14:30 Event Area, Ground Floor

Neuroimaging and psychophysiology

Chair: F. Schlagenhauf, Berlin, Germany

P-08-001

Association between cognitive control and negative symptoms in psychosis

*N. Klaasen, Groningen, The Netherlands
E. Opmeer, K. Juenemann, E. Liemburg, C. Kos, L. Bais,
B. Curcic-Blake, A. Aleman*

P-08-002

Phenomenology and neurobiology of inner speech in healthy subjects and its implication in understanding of auditory verbal hallucinations

*E. Simkova, Klecany, Czech Republic
M. Pastrnak, E. Bakstein, D. Gregus, F. Spaniel*

P-08-003

Blood perfusion in left inferior and middle frontal gyrus predicts functional capacity in schizophrenia

*A. Cantisani, Bern, Switzerland
K. Stegmayer, A. Federspiel, R. Wiest, S. Walther*

P-08-004

Deficits in context-dependent adaptive coding in early psychosis and individuals with schizotypal personality traits

*M. Kirschner, Zurich, Switzerland
O. M. Hager, E. Seifritz, P. N. Tobler, S. Kaiser*

P-08-005

Disrupted thalamo-cortical connectivity as an endophenotype of the schizophrenia: DTI tractography study in the unaffected relatives

*K. I. Cho, Seoul, Republic of Korea
M. Kim, Y. B. Yoon, T. Y. Lee, J. S. Kwon*

P-08-006

Brain structural, electrophysiological, cognitive and clinical profiles of at-risk mental state: the longitudinal Minds in Transition (MinT) study

*U. Schall, Waratah, Australia
P. Rasser, R. Atkinson, R. Fulham, T. Ehlikes, P. Michie,
P. Ward, J. Todd, H. Stain, R. Langdon*

P-08-007

Associations between dynamic brain connectivity and reduced goal-directed behavior as indexed by measures of actigraphy and apathy

*M. Servaas, Groningen, The Netherlands
C. Kos, N. Gravel, R. Renken, J.-B. Marsman, M.-J. van Tol, A. Aleman*

P-08-008

Psychophysiological responses during disgust-related stimuli in patients with schizophrenia – a preliminary report

*B. Bohaterewicz, Warsaw, Poland
M. Nowicka, A. Kovbasiuk, J. Topczewski, M. Marszał-Wisniewska*

P-08-009

Aberrant activity during coherent motion perception in individuals at high risk of psychosis

*R. Mayol, Santiago, Chile
B. Aburto, R. Castillo, S. Corral, J. Cortés-Briones,
D. González, P. Skosnik, H. Silva, P. Gaspar*

SA-02 STATE-OF-THE-ART LECTURES

14:30 – 16:00 Plenary

State-of-the-Art Lectures 2

Chair: J. Klosterkötter, Cologne, Germany

SA-02-001

Prevention of psychosis – current achievements and future challenges

P. Fusar-Poli, London, United Kingdom

SA-02-002

Fighting stigma – advancing recovery

G. Schomerus, Greifswald, Germany

S-15 SYMPOSIA

14:30 – 16:00 Harvard

Deconstructing schizophrenia?

Chairs: W. Gaebel, Düsseldorf, Germany

S. Galderisi, Naples, Italy

S-15-001

Schizophrenia: deconstruction or destruction?

M. J. Owen, Cardiff, United Kingdom

S-15-002

The ICD-11 approach to schizophrenia

W. Gaebel, Düsseldorf, Germany

S-15-003

Subtyping schizophrenia by means of negative symptoms?

S. Galderisi, Naples, Italy

S-15-004

The past and future role of pathognomonic symptoms for schizophrenia

F. Schlagenhauf, Berlin, Germany

A. Heinz

S-16	SYMPOSIA
14:30 – 16:00	Stanford
Update on schizophrenia motor symptoms	
<i>Chairs: S. Walther, Bern, Switzerland</i>	
<i>M. Morrens, Antwerp, Belgium</i>	

S-16-001

Can psychomotor assessment aid the clinician in differentiating schizophrenia from other psychotic disorders?

M. Morrens, Antwerp, Belgium

S-16-002

Electronic devices may revolutionize detection of prodromal symptoms – the impact of motor signs in psychosis screening

P. van Harten, Maastricht, The Netherlands

T. Q. Mentzel

S-16-003

Motor system dysfunction as an intermediate phenotype across schizophrenia spectrum disorders

D. Hirjak, Mannheim, Germany

S-16-004

The cerebral resting state and motor symptoms in schizophrenia? On perfusion and functional connectivity

S. Walther, Bern, Switzerland

P. Viher, K. Stegmayer

S-17	SYMPOSIA
14:30 – 16:00	Princeton
Auditory hallucinations: converging evidence from neuroimaging	
<i>Chairs: B. Curcic-Blake, Groningen, The Netherlands</i>	
<i>K. Hugdahl, Bergen, Norway</i>	

S-17-001

Auditory hallucinations and auditory cortex abnormalities in schizophrenia

I. Agartz, Oslo, Norway

S-17-002

Functional connectome profiles of psychotic symptoms in a transdiagnostic sample

M. J. L. Schutte, Utrecht, The Netherlands

M. Bohlken, G. Collin, L. Abramovic, E. van Dellen,

W. Cahn, M. Boks, N. van Haren, R. Kahn, R. Ophoff,

R. Mandl, I. Sommer

S-17-003

Functional neuroimaging and neurochemistry of auditory verbal hallucinations

K. Hugdahl, Bergen, Norway

K. Kompus

S-17-004

Causal brain connectivity during auditory verbal hallucinations

B. Curcic-Blake, Groningen, The Netherlands

I. Sommer, A. Aleman

S-18	SYMPOSIA
16:30 – 18:00	Plenary
Negative symptoms: research perspectives and implications for recovery	
<i>Chairs: S. Galderisi, Naples, Italy</i>	
<i>S. Kaiser, Chêne-Bourg, Switzerland</i>	

S-18-001

A network approach to unravel the complex interplay between negative symptoms, neuro-cognition, social cognition and real-life functioning in subjects with schizophrenia

A. Mucci, Naples, Italy

P. Rocca, A. Rossi, P. Rucci, D. Gibertoni, M. Maj, G. M. Giordano, M. Stanziano, M. Papa, A. Prinster, A. Soricelli, S. Galderisi

S-18-002

Impact of negative symptoms on functioning and cognition in individuals at ultra high risk for psychosis

A. Üçok, Istanbul, Turkey

S-18-003

Negative symptoms in everyday life – an actigraphy and experience sampling study

S. Kaiser, Chêne-Bourg, Switzerland

M. Kirschner

S-18-004

Neural correlates of apathy-related daily-life actigraphy measures in patients with schizophrenia

C. Kos, Groningen, The Netherlands

A. Aleman

S-19	SYMPOSIA
16:30 – 18:00	Harvard
Symptom dimensions in schizophrenia brain correlates and personalised treatment options	
<i>Chairs: A. Nagels, Marburg, Germany</i>	
<i>W. Strik, Bern, Switzerland</i>	

S-19-001

A three dimensional symptom structure of schizophrenia is linked to specific structural and functional brain changes

W. Strik, Bern, Switzerland

K. Stegmayer, S. Walther, T. Dierks

S-19-002

The neurobiology of thought disorders: specific for schizophrenia?

A. Nagels, Marburg, Germany

T. Kircher

S-19-003

Functional and structural alterations in the limbic system associated to symptom dimension of emotional dysregulation in schizophrenia

K. Stegmayer, Bern, Switzerland

S. Walther

S-19-004

Language pathways in the brain and their basis for the symptoms of schizophrenia

P. Homan, New York, USA

M. Cavelti, S. Winkelbeiner, W. Strik

S-20	SYMPOSIA
16:30 – 18:00	Stanford
Altered inference about relevance in psychosis – computational approaches	
<i>Chairs: F. Schlagenhauf, Berlin, Germany</i>	
<i>S. Borgwardt, Basel, Switzerland</i>	

S-20-001

Alterations of cognitive and perceptual inference in psychosis-proneness

K. Schmack, Berlin, Germany

H. Stuke, P. Sterzer

S-20-002

Aberrant salience, hippocampal activation and subcortical dopamine function in people at ultra high risk for psychosis

A. Schmidt, Basel, Switzerland

S-20-003

Modeling subjective relevance in schizophrenia and its relation to aberrant salience

T. Katthagen, Berlin, Germany

S-20-004

Information-seeking according to uncertainty in health and psychosis: modelling behaviour and brain responses

R. Adams, London, United Kingdom

G. Napier, J. Gilleen, M. Nour, T. Dahoun, P. Schwartenbeck, J. Roiser, O. Howes, C. Mathys

O-04	ORAL PRESENTATIONS
16:30 – 18:00	Princeton
Psychosocial treatment and mental health care	
<i>Chair: W. Wölwer, Düsseldorf, Germany</i>	

O-04-001

The efficacy of psychosocial treatments for patients with present negative symptoms: a meta-analysis

M. Riehle, Hamburg, Germany

M. Pillny, S. Buggisch, T. Lincoln

O-04-002

A randomised experimental manipulation of the jumping-to-conclusions bias in psychosis; impact of brief meta-cognitive training on capacity

D. Turner, Edinburgh, United Kingdom

P. Hutton, A. MacBeth, A. Larkin, L. Karen, A. Campbell

O-04-003

The significance of processing speed in meta-cognitive-based cognitive remediation for first episode psychosis in Malaysia: a preliminary randomised trial

N. Shuib, Putrajaya, Malaysia

M. Ahmad, N. R. Nik Jaafar, Z. Jamil Osman, M. N. Mohamad Alwi

O-04-004

The effects of subjective recovery-oriented psychological interventions on schizophrenic disorders – a systematic review

C. Adamus, Liebefeld, Switzerland

M. Pfammatter

O-04-005

„Recovery“ in the real world: the impact of recovery oriented policy and legislation on service use experience in first episode psychosis

D. O’Keeffe, Dublin, Ireland

A. Sheridan, A. Kelly, R. Doyle, K. Madigan, E. Lawlor, M. Clarke

O-04-006

Development of a framework of recovery for mental health service users in Japan

A. Kanehara, Tokyo, Japan

Y. Kumakura, S. Kanata, Y. Fujieda, H. Koike, K. Morita, S. Yamaguchi, Y. Miyaoto, M. Nochi, M. Fukuda, K. Kasai

S-21	SYMPOSIA
08:30 – 10:00	Plenary
Exercise interventions in schizophrenia – a novel tool for promoting recovery and disentangling underlying pathophysiology	
<i>Chairs: P. Falkai, Munich, Germany</i>	
<i>H. Hulshoff Pol, Utrecht, The Netherlands</i>	

S-21-001

Life course physical activity, psychosis and outcomes in the Northern Finland Birth Cohort 1966
M. Penttillä, Oulu, Finland
E. Jääskeläinen, J. Miettunen, M. Niemelä, T. Jämsä, R. Korpelainen, M. Isohanni

S-21-002

Impaired cardiac response to incremental exercise in patients with schizophrenia
K.-J. Bär, Jena, Germany

S-21-003

The impact of endurance training on brain structure and function in schizophrenia patients
B. Malchow, Munich, Germany

S-21-004

Changes in brain connectivity after endurance training in schizophrenia
H. Hulshoff Pol, Utrecht, The Netherlands

S-22	SYMPOSIA
08:30 – 10:00	Harvard
What can we offer long-term inpatients with psychosis: do's and don'ts regarding the treatment and quality of life	
<i>Chairs: P. van Harten, Maastricht, The Netherlands</i>	
<i>D. Tenback, Amersfoort, The Netherlands</i>	

S-22-001

The effect of a lifestyle intervention on physical and psychiatric health, psychosocial functioning and quality of life in long-term SMI patients
J. Deenik, Amersfoort, The Netherlands
D. Tenback, I. Hendriksen, E. Tak, P. van Harten

S-22-002

Concurrent treatment with typical and atypical antipsychotics; double trouble
M. Shakir, Amersfoort, The Netherlands
P. van Harten, D. Tenback

S-22-003

Association between antipsychotics, movement disorders and accelerometer-measured physical activity in schizophrenia
D. Tenback, Amersfoort, The Netherlands
J. van Oort, J. Deenik, P. van Harten

S-22-004

Dose adjustment to CYP2D6 and CYP2C19 genotype in patients with severe mental illness
A. Koopmans, The Hague, The Netherlands
D. Vinkers, I. Poulina, P. Gelan, R. van Schaik, H. W. Hoek, P. Van Harten

S-23	SYMPOSIA
08:30 – 10:00	Stanford
Reinforcement learning alterations and dopamine dysfunction in psychosis	
<i>Chairs: F. Schlagenhauf, Berlin, Germany</i>	
<i>T. Maia, Lisbon, Portugal</i>	

S-23-001

A reinforcement-learning perspective on the role of dopamine in schizophrenia
T. Maia, Lisbon, Portugal

S-23-002

Reward prediction error coding and dopamine dysfunction in psychosis
F. Schlagenhauf, Berlin, Germany

S-23-003

Deficits in context-dependent adaptive coding of reward in psychosis
S. Kaiser, Chêne-Bourg, Switzerland

S-23-004

Delusion-like thinking is linked to alterations in the neural mechanisms facilitating learning about unreliable rewards
K. Diederer, Cambridge, United Kingdom
J. Haarsma, T. Spencer, H. Ziauddeen, P. Fletcher

O-05	ORAL PRESENTATIONS
08:30 – 10:00	Princeton
Neuroimaging	
<i>Chair: K. Hugdahl, Bergen, Norway</i>	

O-05-001

Magnetic resonance imaging study of regional cerebellar volumes in schizophrenia: effects of ageing, treatment, and secondary co-morbidities
U. Schall, Waratah, Australia
P. Rasser, J. Bergmann

O-05-002

Association found between current vitamin D levels and white matter volume in patients with psychosis and healthy controls
A. O. Berg, Oslo, Norway
K. N. Jørgensen, M. Nerhus, T. P. Gurholt, O. Andreasen, I. Agartz, I. Melle

O-05-003

Micro-structure of the superior temporal gyrus and hallucination proneness – a multi-compartment diffusion imaging study
A. Spray, Liverpool, United Kingdom
A. Beer, G. Meyer

O-05-004

Brain areas associated with insight in psychotic disorders: a meta-analysis
G. Pijnenborg, Groningen, The Netherlands
D. Larabi, P. Xu, B. Curcic-Blake, A. De Vos, A. Aleman, L. Van der Meer

O-05-005

Cognitive deficits and its relation to fronto-parietal activation in schizophrenia patients
J. Kaminski, Berlin, Germany
Y. Fukuda, T. Katthagen, A. Heinz, F. Schlagenhauf

O-05-006

Hierarchical prediction errors during auditory mismatch: a computational single-trial EEG analysis
L. A. Weber, Zurich, Switzerland
S. Tomiello, D. Schöbi, S. Iglesias, C. D. Mathys, H. Haker, G. Stefanics, A. O. Diaconescu, K. E. Stephan

SA-03 STATE-OF-THE-ART LECTURES

10:30 – 12:00 Plenary

State-of-the-Art Lectures 3

Chair: P. Falkai, Munich, Germany

SA-03-001

**Pharmacological therapies for schizophrenia
– recent advances and future perspectives**

W. W. Fleischhacker, Innsbruck, Austria

SA-03-002

**Psychological interventions for promoting re-
covery**

A. Morrison, Manchester, United Kingdom

S-24 SYMPOSIA

10:30 – 12:00 Harvard

**Negative symptoms – bridging basic research
and clinical application**

*Chairs: S. Kaiser, Chêne-Bourg, Switzerland
T. Lincoln, Hamburg, Germany*

S-24-001

**Behavioral correlates of negative symptom di-
mensions – what next?**

M. Hartmann, Zurich, Switzerland

S-24-002

**Functional analysis of negative symptoms and
implications for therapy**

T. Lincoln, Hamburg, Germany

S-24-003

**Positive emotions program for schizophrenia:
a randomized clinical trial**

*J. Favrod, Lausanne, Switzerland
A. Nguyen, P. Golay, C. Bonsack*

S-24-004

**From neuroanatomical models of negative symp-
toms to noninvasive brain stimulation (NIBS)**

A. Aleman, Groningen, The Netherlands

S-25	SYMPOSIA
10:30 – 12:00	Stanford
Neurocognitive mechanisms underlying working memory impairments in schizophrenia: new directions	
<i>Chairs: R. Bittner, Frankfurt, Germany</i>	
<i>C. Haenschel, London, United Kingdom</i>	

S-25-001

Detrimental effects of neural noise on working memory: perceptual inefficiency revisited

S. Park, Nashville, USA

M. Ichinose, W. J. Park, D. Tadin

S-25-002

Neuronal mechanisms underlying working memory capacity limitations in people with schizophrenia

B. Hahn, Catonsville, USA

E. Stein, C. Leonard, S. Luck, J. Gold

S-25-003

Influence of early visual encoding on working memory performance and its dysfunctions in schizophrenia

C. Haenschel, London, United Kingdom

M. Kosilo, C. Filannino, N. Laxhman, J. Martinovic, E. Freeman

S-25-004

The effects of genetic risk for schizophrenia on cortical working memory networks

R. Bittner, Frankfurt, Germany

P. Hahn, C. Novak, T. Lancaster, D. Linden, A. Reif

S-26	SYMPOSIA
10:30 – 12:00	Princeton
First episode psychosis: factors that influence burden and outcome	
<i>Chairs: A. Faerden, Oslo, Norway</i>	
<i>C. Simonsen, Oslo, Norway</i>	

S-26-001

Self-rated experience of disability in first-episode psychosis at 1-year follow-up

C. Simonsen, Oslo, Norway

A. Faerden, T. Ueland, A. Vaskinn, T. Bjella, O. Andreasen, K. Romm, I. Melle

S-26-002

Enduring apathy and depression in first episode psychosis. Consequences for outcome in a one year follow-up study

S. H. Lyngstad, Oslo, Norway

I. Melle, A. Faerden

S-26-003

Cognitive dimensions and global functioning in relapsing and non-relapsing first episode psychosis patients: a 1-year follow-up study

M. J. Engen, Oslo, Norway

C. Simonsen, B. Haatveit, A. Vaskinn, I. Melle, T. Ueland

S-26-004

Negative symptoms and long-term functional outcome

I. Melle, Oslo, Norway

W. t. Velden Hegelstad, I. Joa, J. Evensen, U. Haahr, E. Simonsen, J. O. Johannessen, S. Friis

PL-03	PLENARY LECTURES
12:15 – 13:00	Plenary
Early intervention – the next stage	
<i>Chair: P. McGuire, London, United Kingdom</i>	

PL-03-001

Early intervention – the next stage

A. Yung, Manchester, United Kingdom

P-09	POSTER SESSIONS
13:30 – 14:30	Foyer, Ground Floor
Psychosocial treatment	
Chair: T. Lincoln, Hamburg, Germany	

P-09-001

A meta-analysis of social skills training and related interventions for psychosis

D. Turner, Edinburgh, United Kingdom

A. MacBeth, E. McGlanachy, P. Hutton, P. Cuijpers, M. van der Gaag, E. Karyotaki

P-09-002

Defeatist performance beliefs in a sample of individuals with persistent negative symptoms

B. Thonon, Liège, Belgium

X. Li, D. Velligan

P-09-003

Predicting psychotherapeutic service use and medication adherence following inpatient care for psychosis

K. Hesse, Tübingen, Germany

S. Klingberg

P-09-004

Mentalization based treatment for non-affective psychotic disorder: rationale

J. Weijers, Utrecht, The Netherlands

E. Eurelings, C. ten Kate, J.-P. Selten

P-09-005

Robin: a smartphone application approach to support treatment of (attenuated) psychotic symptoms in adolescents

N. Traber-Walker, Zurich, Switzerland

M. Gerstenberg, M. R. Joris, S. Walitza, M. Franscini

P-09-006

ETRo: evaluation of the combined treatment approach 'Robin' (standardized manual and smartphone App) for adolescents at high risk for developing a psychotic disorder

N. Traber-Walker, Zurich, Switzerland

M. Gerstenberg, K. Markus, M. Sibylle, A. Roth, S. Walitza, M. Franscini

P-09-007

The effects of a multidisciplinary lifestyle-enhancing treatment for severe mentally ill inpatients (MULTI-study)

J. Deenik, Amersfoort, The Netherlands

D. Tenback, I. Hendriksen, E. Tak, P. Van Harten

P-09-008

DECIDE study: effectiveness of shared decision making in treatment planning at discharge of inpatient with schizophrenia: 3 years of recruitment, full sample preliminary analysis

J. Villagran, El Puerto de Santa Maria, Spain

J. I. Perez Revuelta, J. M. Pascual, C. Rodriguez, J. M. Mongil, F. Gonzalez

P-09-009

Development of a question prompt sheet for schizophrenia: dissemination strategies to raise awareness of Shared Decision Making (SDM) in Japan

Y. Kumakura, Tokyo, Japan

A. Kanehara, S. Kanata, I. Natsukari, S. Kondo, K. Ichihashi, M. Suga, Y. Miyamoto, E. Ikebuchi, M. Fukuda, K. Kasai

P-09-010

Impact of self-disclosure of professionals on empowerment of patients: a conversational analysis

A. Nguyen, Lausanne, Switzerland

J. Favrod, L. Frobert, J. Pellet

P-09-011

Intensive psychological assistance compared to psychopathological symptoms level among patients diagnosed with paranoid schizophrenia

B. Witkowska-Luc, Kielce, Poland

P-09-012

Introducing psychiatric rehabilitation 'Illness Management and Recovery' in Pakistan in collaboration with Rutgers School of Health related professions USA

A. Kazmi, Karachi, Pakistan

C. Pratt, R. Smith

P-10 POSTER SESSIONS

13:30 – 14:30 Event Area, Ground Floor

Neuropsychology and neuroimaging 1

*Chair: G. Pijnenborg, Groningen,
The Netherlands*

P-10-001

The association between cardio-respiratory fitness and cognition in schizophrenia

*T. L. Holmen, Oslo, Norway
J. Egeland, E. Andersen, T. T. Bigseth, J. A. Engh*

P-10-002

Visual versus auditory cognitive training for schizophrenia: effects on cognition, symptoms and quality of life

*R. Panizzutti, Rio de Janeiro, Brazil
L. Scoriels, L. Genaro, L. Mororo, A. L. Guimarães,
N. Goldenstein, M. Fisher, S. Vinogradov*

P-10-003

Working memory training may improve the performance of positive emotion processing in patients with schizophrenia: evidence from an event-related potentials study

*S.-K. Chiang, Hualien, Taiwan
W.-Y. Liu*

P-10-004

Auditory mismatch negativity impairments predict response to cognitive training in individuals with early illness schizophrenia

*B. Biagiatti, San Francisco, USA
B. Roach, M. Fisher, R. Loewy, J. Ford, S. Vinogradov*

P-10-005

Self-regulation of the dopaminergic reward system via real time fMRI neurofeedback in schizophrenia

*M. Kirschner, Zurich, Switzerland
P. Stämpfli, E. Jehli, J. Sulzer, E. Seifritz, B. B. Quednow,
M. Herdener, S. Kaiser*

P-10-006

Dopaminergic and cholinergic influences on prediction error signaling in reward learning: a computational trial-by-trial EEG analysis

*S. Tomiello, Zurich, Switzerland
D. Schoebi, L. A. Weber, H. Haker, S. Iglesias, K. E. Stephan*

P-10-007

Introducing COMPASS: comparing brain activity across patients with differential treatment response in schizophrenia: an observational study

*S. Iglesias, Zurich, Switzerland
M. Bischof, J. Siemerikus, S. Tomiello, D. Schöbi, L. Weber, J. Heinzle, W. Kawohl, S. Kaiser, H. Haker, K. E. Stephan*

P-10-008

Verbal memory and schizophrenia

*M. Fiste, Chaidari Athens, Greece
P. Kaloutsou, C. Andronoglou, E. Neroutsos*

P-10-009

Effects of raloxifene on cognition in postmenopausal women with schizophrenia: a 24-week double-blind, randomized, parallel, placebo-controlled trial

*E. Huerta-Ramos, Sant Boi de Llobregat, Spain
J. Labad, J. Cobo, C. Núñez, M. Creus, G. García-Parés,
D. Cuadras, J. Franco, J. Usall, E. Miquel, S. Marcó-García*

P-11 POSTER SESSIONS

13:30 – 14:30 Event Area, Ground Floor

Neuropsychology and neuroimaging 2

Chair: U. Schall, Waratah, Australia

P-11-001

Victimizational and brain responses to emotional facial expressions in individuals with a psychotic disorder: results of the Beatvic study

*E. van der Stouwe, Groningen, The Netherlands
J. van Busschbach, E. Opmeer, B. de Vries, J.-B. Marsman, A. Aleman, G. Pijnenborg*

P-11-002

Facial emotion recognition and theory of mind in schizophrenia: a meta-analysis of neuroimaging studies

*T. Kasperek, Brno, Czech Republic
M. Jání*

P-11-003

Attention bias to threat during the emotional stroop task in paranoid psychosis: an fMRI study

*C. Al-Ibrahim, London, United Kingdom
J. Yiend, S. Shergill*

P-11-004

Changes in limbic activity in fMRI according to response to an emotional paradigm in first-episode psychotic patients with auditory hallucinations

*P. Soldevila-Matias, Valencia, Spain
G. García-Martí, M. Casanueva-Fernández, O. Sparano-Ros, C. González-Vivas, R. Sanz, L. Martí-Bonmati, J. Sanjuán*

P-11-005

Insight and emotion regulation in schizophrenia: an fMRI study

*B. Curcic-Blake, Groningen, The Netherlands
D. Larabi, L. van der Meer, G. Pijnenborg, A. Aleman*

P-11-006

Negative symptoms are associated with altered imagination of positive future events and its neural correlates

*N. Klaasen, Groningen, The Netherlands
E. Opmeer, C. Kos, L. Bais, A. Aleman*

P-11-007

No relationship between affective state and neurocognition in schizophrenia spectrum disorders

*C. Mohn, Drammen, Norway
A.-K. Olsson, M. Johansson, H. Moradi, L. Helldin*

P-11-008

Disorganized and negative symptoms are associated with neurocognitive impairment in adolescent schizophrenia. Measured with the MATRICS and the Wallwork/Fortgang PANSS Factor Model

*R. E. Smelror, Oslo, Norway
B. R. Rund, V. Lonning, K. Wedervang-Resell, A. M. Myhre, I. Agartz*

P-11-009

The relationship between theory of mind, empathy and emotion recognition in schizophrenia patients and healthy controls

*N. Conradt, Düsseldorf, Germany
N. Frommann, D. Kamp, A. Lowe, L. Pintgen, K. Weide, W. Wölwer*

P-11-010

The relationship between theory of mind and psychopathological symptoms in schizophrenia

*K. Golêbiewska, Poznań, Poland
K. Górna, K. Swieca, M. Labedzka, R. Szpalik, J. Kiejda, A. Smelkowska, B. Grabowska-Fudala, K. Jaracz*

P-12 POSTER SESSIONS

13:30 – 14:30 Event Area, Ground Floor

Neurobiology and genetics

Chair: M. Fukuda, Maebashi, Japan

P-12-001

Endogenous hormone levels in people with schizophrenia compared with healthy controls

E. Ji, Créteil Cedex, France

P-12-002

Violation of glutamatergic neurotransmission is found in patients with schizophrenia by the proteomics methods

A. Letova, Tomsk, Russia

L. Smirnova, E. Dmitrieva, A. Seregin, L. Loginova,

A. Semke, S. Ivanova

P-12-003

Evidence for neuroinflammation in post mortem brains of schizophrenic and bipolar patients: a semiquantitative study of B-lymphocytes and plasma cells

J. Steiner, Magdeburg, Germany

S. V. Schwarz, B. Jerzykiewicz, H. Dobrowolny, D. Winnopal, K. Schlaaff, T. Frodl, B. Bogerts

P-12-004

Neurohistochemical evidence of T-lymphocyte related neuroinflammation in the cortex and hippocampus of depressed patients

J. Steiner, Magdeburg, Germany

D. Winnopal, S. V. Schwarz, K. Schlaaff, H. Dobrowolny, T. Frodl, B. Bogerts

P-12-005

C-reactive protein in schizophrenia-spectrum disorders, relationship to cognitive function in acute phase of psychosis with a longitudinal perspective

F. Fathian, Bergen, Norway

E.-M. Løberg, R. Gjestad, R. A. Kroken, E. Johnsen

P-12-006

Establishing pathway profiling as functional diagnostic tool for schizophrenia

S.-K. Kirchner, Munich, Germany

S. Galinski, J. Richterich, B. Brankatschk, R. Musil, S. Papiol, M. Wehr, P. Falkai, M. Rossner

P-12-007

A systematic appraisal of the MHC gene variation associated with either autism or schizophrenia

B. Fossi, Florence, Italy

B. Porfirio

P-12-008

Genetic studies of schizophrenia in South American populations

A. Ruiz, Santiago, Chile

R. M. Murray, J. Powell, P. Sham

P-12-009

Investigation of the role of schizophrenia de novo mutations in LRRC7 and KHSRP genes by parallel reprogramming of a schizophrenia case-parent trio

J. Réthelyi, Budapest, Hungary

E. Hathy, Á. Apáti, Z. Nemoda

P-12-010

Chronic stress exposure induced the development of cognitive deficits: involvement of genomic vs non-genomic effect mediated by glucocorticoid receptors

P. Brivio, Milan, Italy

M. Papp, G. A. Racagni, M. A. Riva, F. Calabrese

P-12-011

Alteration of the neurotransmission network in the frontal lobe of a genetic mouse model of schizophrenia

S. Morasawa, Nagoya, Japan

S. Iritani, T. Marui, H. Sekiguchi, C. Habuchi, Y. Torii, H. Fujishiro, K. Kuroda, K. Kaibuchi, N. Ozaki

P-12-012

Investigation of pupillary light reflex in 'schizophrenia-like' (WISKET) rats

A. Büki, Szeged, Hungary

G. Kalmár, G. Kékesi, G. Benedek, L. Nyúl, G. Horváth

S-27	SYMPOSIA
14:30 – 16:00	Plenary
Offspring of parents with psychosis: perinatal indicators of risk and resilience	
<i>Chairs: A. MacBeth, Edinburgh, United Kingdom</i>	
<i>S. Harder, Copenhagen, Denmark</i>	

S-27-001

General fertility rate and perinatal outcomes in women with schizophrenia

A. MacBeth, Edinburgh, United Kingdom

P. McSkimming, S. Bhattacharya, J. Park, D. St. Clair, A. Gumley

S-27-002

Offspring of parents with psychosis: perinatal indicators of risk and resilience. The WARM study – initial findings

S. Harder, Copenhagen, Denmark

M. Nyström-Hansen, K. Røhder, C. H. Trier, K. Davidsen, A. MacBeth, A. Gumley

S-27-003

Evidence of early developmental risk in offspring of parents with psychotic disorders

A. Gumley, Glasgow, United Kingdom

K. Davidsen, A. MacBeth, S. Harder

S-27-004

Early cognitive and motor development in offspring of mothers with psychotic disorders

E. Nayberg, Copenhagen, Denmark

A. MacBeth, A. Gumley, K. Davidsen, C. Høier Trier, M. Nyström-Hansen, K. Røhder, S. Harder

S-28	SYMPOSIA
14:30 – 16:00	Harvard
The role of stressful life events and stress markers in children and adolescents with psychosis or at high risk for psychosis	
<i>Chairs: I. Baeza Pertegaz, Barcelona, Spain</i>	
<i>M. Dolz Abadia, Esplugues de Llobregat, Spain</i>	

S-28-001

Genetic risk for psychosis and stressful life events in children and adolescents

E. De la Serna Gómez, Barcelona, Spain

S-28-002

Evaluating stressful life events in child and adolescents at risk for psychosis. Preliminary data from a longitudinal study

D. Muñoz Samons, Esplugues de Llobregat, Spain

S-28-003

Biological markers of stress in children and adolescents with first-episode of psychosis

I. Baeza Pertegaz, Barcelona, Spain

S-28-004

Does cortisol play a role in children and adolescents with psychosis risk syndrome?

M. Dolz Abadia, Esplugues de Llobregat, Spain

S-29 SYMPOSIA

14:30 – 16:00

Stanford

Paranoia – potential vulnerability factors under the spotlight

*Chairs: F. Waite, Oxford, United Kingdom
K. Krkovic, Hamburg, Germany*

S-29-001

Cognitive predictors of paranoia in the months after an interpersonal assault

*G. Geddes, Oxford, United Kingdom
D. Freeman, A. Ehlers*

S-29-002

The interplay between traumatic experiences, stress sensitivity, and subclinical paranoid symptoms in daily life

*K. Krkovic, Hamburg, Germany
T. Lincoln*

S-29-003

From negative affect to paranoia in daily life: the role of emotion regulation in the formation of psychotic symptoms

*L. Ludwig, Hamburg, Germany
K. Krkovic, T. Lincoln*

S-29-004

Insomnia and paranoia: an experimental study with analysis of mediating mechanisms

S. Reeve, Oxford, United Kingdom

O-06 ORAL PRESENTATIONS

14:30 – 16:00

Princeton

Neurobiology

Chair: K. Bechter, Güzburg, Germany

O-06-001

Is affective liability in bipolar disorder associated with a bipolar disorder polygenic score?

*S. R. Aminoff, Oslo, Norway
C. Henry, F. Bettella, T. Vik Lagerberg, B. Etain, A. Ottesen Berg, M. Aas, T. Bjella, F. Bellivier, S. Djurovic, O. A. Andreassen, I. Melle*

O-06-002

The role of gene for insulin-degrading enzyme in the pathogenesis of schizophrenia

*L. Ewerlingova, Brno, Czech Republic
J. Janoutová, J. Lochman, V. Janout, L. Hosák, V. J. Balcar, O. Šerý*

O-06-003

Serum lipid levels and cytokines in relation to depressive symptomatology in psychotic disorders

*S. Gohar, Oslo, Norway
I. Melle*

O-06-004

Glutamate dehydrogenase-deficient mice display hippocampal dysfunction relevant to schizophrenia pathology

*I. Gaisler-Salomon, Haifa, Israel
S. Lander, F. Provenzano, D. Chakraborty, S. Mingote, H. Kaphzan, S. Rayport, S. Small*

O-06-005

Brain excitation/inhibition balance and genetic factor in paranoid schizophrenia. An ERP, fMRI and gene RELN study

A. Arkhipov, Moscow, Russia

O-06-006

Identification of therapeutic targets in the spectrum schizophrenia

G. Jemar, Buenos Aires, Argentina

CONFERENCE INFORMATION

CONFERENCE VENUE

Seminaris Science & Conference Center The Dahlem Cube

Takustraße 39, 14195 Berlin, Germany

www.seminaris.de/hotels/

seminaris-campushotel-berlin.html

CONFERENCE REGISTRATION COUNTER

All conference material and documentation are available at the conference registration counter located in the foyer on the ground floor of the Dahlem Cube.

OPENING HOURS

Thursday, 14 Sept. 2017	08:00 – 18:00
Friday, 15 Sept. 2017	08:00 – 18:00
Saturday, 16 Sept. 2017	08:00 – 16:00

During these opening hours the conference counter can be reached at: Phone: +49 – 30 – 557 797 471

REGISTRATION FEE

ON-SITE REGISTRATION

Members of ESAS	EUR 500
Non-members	EUR 570
Trainees *	EUR 470

* Non-tenured junior scientists or clinical residents in training under 35 years (to be confirmed by head of department).

ON-SITE REGISTRATION

On-site registration will be processed on a first-come, first-served basis. Priority will be given to pre-registered delegates. Depending on the number of on-site registered delegates, availability of conference documentation may be limited.

NAME BADGES

Participants are kindly requested to wear their name badge at all times during the conference

including the Opening Ceremony and Networking Reception.

CONFERENCE LANGUAGE

The conference language is English. Simultaneous translation will not be provided.

PROGRAMME CHANGES

The organisers cannot assume liability for any changes in the conference programme due to external or unforeseen circumstances.

CONGRESS APP

Get the 6th European Conference on Schizophrenia Research APP for your smart phone now and experience the congress at your fingertips! Quickly find your way through the most up-to-date congress schedule. Stop carrying around piles of paper. Just take the congress with you, wherever and whenever you want! The APP is completely free and provides iPhone/iPad, Android Smartphone users at the 6th European Conference on Schizophrenia Research in Berlin.

ECSR
2017



The ECSR 2017 APP is powered by GLOBIT GmbH in cooperation with esanum GmbH.

Further information is given

<http://www.schizophrenianet.eu/congress-app/>



ACKNOWLEDGEMENTS / FUNDINGS

This conference will be completely independent from industry funding

ABSTRACT BOOK

All accepted abstracts are published in an abstract book as a supplement of the European Archives of Psychiatry and Clinical Neurosciences (EAPCN). The abstract book will be handed out together with the conference documentation at the registration counter.

MEDIA CHECK

The Media Check is located in room Yale 1 on the first floor of the Dahlem Cube. Speakers are asked to hand in their CD ROM or USB stick, containing the PowerPoint presentation (IBM format or compatible, no multisession) preferably one day before their session but at the latest 90 minutes prior to the presentation. The presentation will be transferred to a special conference notebook in the session room. Due to time and technical reasons we kindly ask the speakers not to use their own notebook.

OPENING HOURS

Thursday, 14 Sept. 2017	08:00 – 18:00
Friday, 15 Sept. 2017	08:00 – 18:00
Saturday, 16 Sept. 2017	08:00 – 15:00

POSTER EXHIBITION

The poster exhibition is located in the foyer and the event area on the ground floor. Please see as the poster plan on page 47.

Posters will be on display for the entire time of the conference. They will be sorted by topics and will be numbered within those topics.

The poster exhibition is open to all registered delegates, daily guided poster tours will take place chaired by senior scientists:

Thursday, 14 Sept. 2017

Guided Poster Tours P-01 – P-04: 13:30 – 14:30

Friday, 15 Sept. 2017

Guided Poster Tours P-05 – P-08: 13:30 – 14:30

Saturday, 16 Sept. 2017

Guided Poster Tours P-09 – P-12: 13:30 – 14:30

Interested participants can meet the authors for discussions of their poster presentation during the time of the poster tour.

Set-up and dismantling times for posters

Set-up:

Thursday, 14 Sept. 2017 08:00 – 10:00

Dismantling:

Saturday, 16 Sept. 2017 16:00 – 17:00

Posters which have not been removed within the indicated dismantling time will be disposed.

CERTIFICATE OF ATTENDANCE

A certificate of attendance will be handed out upon demand at the registration counter.

COFFEE BREAKS

Coffee, tea and mineral water will be served free of charge to all registered delegates during the morning and afternoon coffee breaks from Thursday, 14 September to Saturday, 16 September 2017. Coffee bar stations are located in the foyer areas of the ground floor. In addition to the regular coffee breaks the coffee bar on the first floor will provide drinks on cash basis.

LUNCH AND RESTAURANTS

A lunch snack will be served to all registered delegates during the lunch breaks from Thursday, 14 September to Saturday, 16 September 2017 in the foyer of the ground floor. The conference venue further provides a restaurant in the Seminaris hotel opposite the courtyard of the Dahlem Cube where snacks and food are available on cash basis.

CONFERENCE INFORMATION

MOBILE PHONES

Participants are kindly requested to keep their mobile phones soundless while attending the scientific sessions in the meeting rooms.

INSURANCE

The conference fee does not include insurance. All participants are advised to arrange for their own insurance. Health and accident insurance is recommended and has to be purchased in your country of residence.

HOW TO GET TO THE SEMINARIS SCIENCE & CONFERENCE CENTER



By car:

From the North: A 115 southward, AS 2 Hüttenweg direction city, turn left Clayallee, right into Königin-Louise-Straße, right into Takustraße/Lansstraße

From the West: A2/A 10/A 115 direction Potsdam/Berlin/AS 4 Zehlendorf/B1 Potsdamer Chaussee/turn left Clayallee/right Königin-Louise-Straße/right into Takustraße/Lansstraße

From the South: via A 103/AS 5 Schlossstraße to the B1, Unter den Eichen, turn right into Fabeckstraße then Lansstraße

From the East: via A 12/A 10/A 113 direction airport BBI (Schönefeld) A 100/A 103/exit 5 Wolfensteindamm, turn right into Schlossstraße direction Dahlem/left into Grunewaldstraße/Königin-Louise-Straße/Lansstraße

Distance to the airport:

Berlin Tegel: Transfer time by taxi approximately 30 minutes depending on traffic

Berlin Schönefeld: Transfer time by taxi approximately 45 minutes depending on traffic

By train:

Berlin main station (ICE, IC-, RE- und RB-Station), then take the underground U3 to station "Dahlem-Dorf". Exit the station towards Königin-Louise-Straße. Follow the road for 300 m until you reach the crossroad Takustraße.

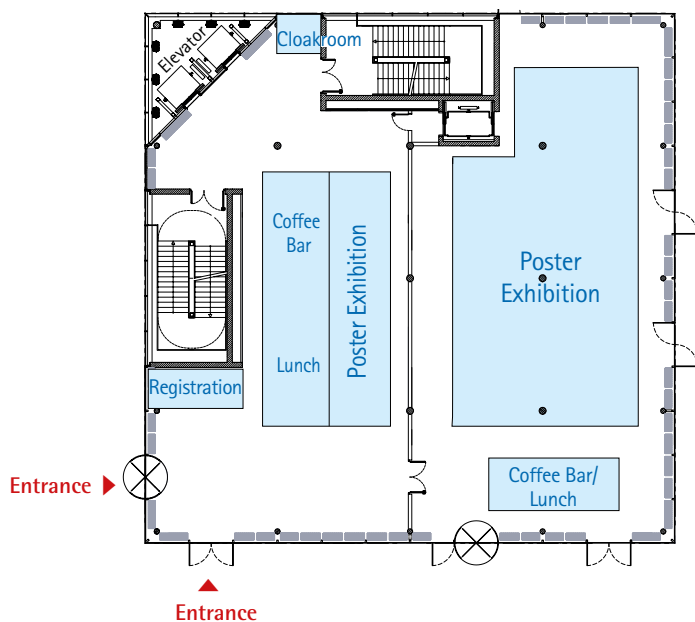
City hotels Kurfürstendamm:

Point of departure: Heidelberger Platz
Take the underground U3 to Krumme Lanke and get off at Dahlem-Dorf towards direction Königin-Louise-Straße. From here 300 m walk to the Seminaris Science & Conference Center.

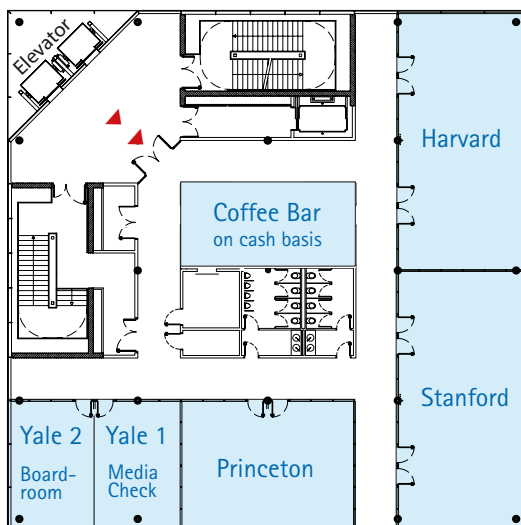
PARKING

There is an underground car park with direct access to the Seminaris CampusHotel. The parking fee is EUR 2 for the first hour and EUR 1 from the second hour. The fee for a day ticket is EUR 12.

GROUND FLOOR

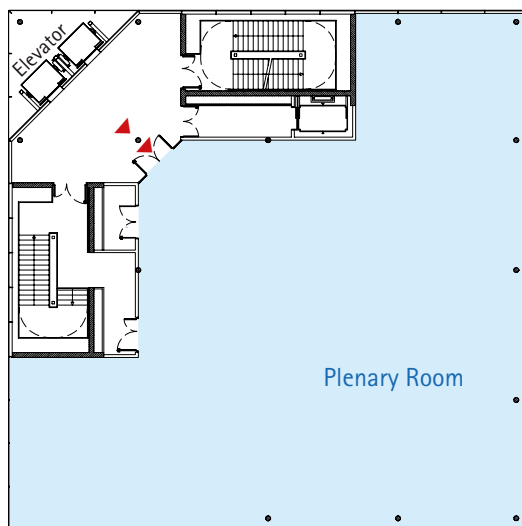


FIRST FLOOR



FLOOR PLAN

SECOND FLOOR



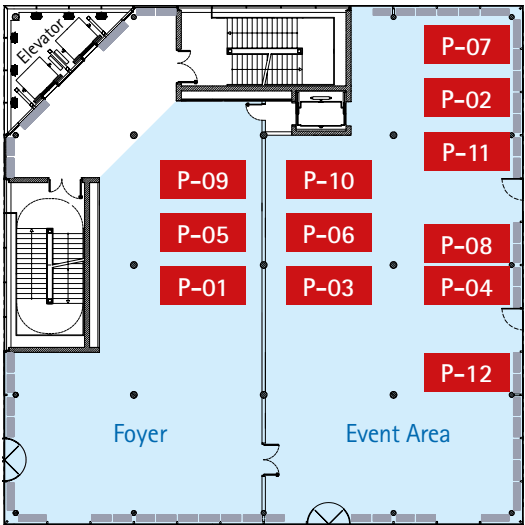
**Please visit
the Poster Exhibition**



in the foyer and event area of the ground floor.

Poster sessions are grouped according to related topics and are on display in following areas:

GROUND FLOOR, FOYER AND EVENT AREA



GUIDED POSTER TOURS: 13:30 –14:30

Thursday, 14 September 2017

P-01	Diagnosis and epidemiology
P-02	Drug and alternative treatment 1
P-03	Outcome and stigma
P-04	Neuropsychology

Saturday, 16 September 2017

P-09	Psychosocial treatment
P-10	Neuropsychology and neuroimaging 1
P-11	Neuropsychology and neuroimaging 2
P-12	Neurobiology and genetics

Friday, 15 September 2017

P-05	Risk factors
P-06	Psychopathology and comorbidity
P-07	Drug and alternative treatment 2
P-08	Neuroimaging and psychophysiology

SET-UP AND DISMANTLING TIMES
FOR POSTERS

Set-up:

Thursday, 14 Sept. 2017: 08:00 – 10:00

Dismantling:

Saturday, 16 Sept. 2017: 16:00 – 17:00

INDEX OF CHAIRPERSONS, AUTHORS AND PRESENTERS

A

Aase, I.	15
Adams, R.	31
Adamus, C.	31
Agartz, I.	29
Aleman, A.	18, 34
Al-Ibrahim, C.	38
Allé, M.	10
Aminoff, S. R.	41
Amuta, J.	25
Arkipov, A.	41

B

Baeza Pertegaz, I.	40
Bais, L.	26
Bakker, P. R.	11
Bär, K.-J.	32
Barnes, C.	15
Bechter, K.	21, 41
Berg, A. O.	33
Berna, F.	10
Biagiante, B.	37
Bird, J.	22
Bittner, R.	35
Bohaterewicz, B.	27
Borgwardt, S.	31
Brivio, P.	39
Brown, D.	21
Büki, A.	39
Bull, H.	10
Butjosa, A.	24

C

Calabrese, F.	21
Cantisani, A.	27
Cardoso, J.	25
Casanueva Fernández, M.	25
Cervenka, S.	11
Chiang, S.-K.	37
Cho, K. I.	27
Ciubara, A.	12
Clamor, A.	22
Cohen, D.	19, 23
Conradt, N.	38

Corcoles, D.	26
Corripio, I.	19
Cotter, D.	19
Curcic-Blake, B.	29, 38

D

Deenik, J.	32, 36
De la Serna Gómez, E.	40
Devoe, D.	17
Diederer, K.	33
Dogra, A.	24
Dollfus, S.	13, 23
Dolz Abadia, M.	40
Doyle, R.	14
Duval, C.	25

E

Egerton, A.	23
Engelstad, K. N.	15
Engemann, K.	17
Engen, M. J.	35
Erhardt, S.	11
Evensen, S.	10
Ewerlingova, L.	41

F

Faerden, A.	35
Falkai, P.	32, 34
Falkum, E.	10
Farkas, K.	18
Fathian, F.	13, 39
Favrod, J.	34
Fiste, M.	14, 26, 37
Fleischhacker, W. W.	34
Fossi, B.	39
Foucher, J.	19
Freeman, D.	15, 22
Fukuda, M.	14, 39
Fusar-Poli, P.	20, 28

G

Gaebel, W.	11, 28
Gaisler-Salomon, I.	41
Galderisi, S.	28, 30
Geddes, G.	41

Gillespie, A.	23
Gohar, S.	41
Golëbiewska, K.	14, 38
Grace, A. A.	23
Grasa, E. M.	18
Gumley, A.	40
Gutkevich, E.	14

H

Haenschel, C.	35
Hahn, B.	35
Harder, S.	40
Hartmann, M.	34
Heinz, A.	28
Herold, C. J.	10
Hesse, K.	36
Hintze, B.	15
Hirjak, D.	29
Holmen, T. L.	37
Homan, P.	30
Homberg, J. R.	21
Howes, O.	19, 22
Huerta-Ramos, E.	37
Hugdahl, K.	29, 33
Hulshoff Pol, H.	32

I

Iglesias, S.	37
Ilankovic, N.	24
Isohanni, M.	18, 23

J

Jabir, M. F.	13
Jemar, G.	41
Ji, E.	39
Jongsma, H.	16
Jouini, R.	12, 25

K

Kaiser, S.	30, 33, 34
Kaloutsou, P.	26, 37
Kaminski, J.	33
Kanehara, A.	31
Kasperek, T.	26, 38
Katthagen, T.	31

INDEX OF CHAIRPERSONS, AUTHORS AND PRESENTERS

Kazmi, A.	36
Kim, S. N.	15
Kircher, T.	20, 30
Kirchner, S.-K.	39
Kirkbride, J.	16
Kirschner, M.	27, 37
Klaasen, N.	27, 38
Klosterkötter, J.	20, 28
Kocsis-Bogar, K.	24
Koenig, T.	17
Koopmans, A.	32
Kornetova, E.	13
Korth, C.	19
Kos, C.	23, 30
Krkovic, K.	41
Kroken, R. A.	13
Kumakura, Y.	36

L

Lange, S.	14
Larabi, D.	38
Laskemoen, J. F.	24
Lee, T. Y.	26
Letova, A.	39
Lincoln, T.	22, 34, 36
Ludwig, L.	41
Lyngstad, S. H.	35

M

MacBeth, A.	12, 40
MacLeod, J.	18
Maia, T.	33
Malchow, B.	32
Maric, N.	20
Martensen, L. K.	14
Mayol, R.	27
Mayoral-van Son, J.	23
McGuire, P.	23, 35
Meisenzahl, E.	16, 24
Melle, I.	17, 35
Mentzel, C.	11
Meyer-Lindenberg, A.	11, 16
Mohammadi Kalhori, S.	12
Mohn, C.	38

Möller, H.-J.	22
Morgan, C.	16
Morosawa, S.	39
Morrens, M.	11, 29
Morrison, A.	34
Mucci, A.	14, 17, 30
Müller, F.	13
Muñoz Samons, D.	40
Murray, R. M.	16, 18
Mutica, M.	13

N

Nagels, A.	20, 30
Najjar, S.	21
Nayberg, E.	40
Neroutsos, E.	14, 26
Nguyen, A.	36
Nikiforuk, A.	21

O

O'Keeffe, D.	14, 31
Onyeka, I.	25
Opmeer, E.	27
Østefjells, T.	19
O'Tuathaigh, C.	21
Owen, M. J.	24, 28

P

Palchykov, V.	13
Palombini, E.	24
Panizzutti, R.	37
Papsuev, O.	25
Park, S.	35
Penttilä, M.	32
Peters, E.	22, 24
Pijnenborg, G.	33, 37
Pirlog, M. C.	14, 24
Porfirio, B.	39
Pousa, E.	19

R

Rakhmazova, L.	12
Reeve, S.	41
Reininghaus, U.	22
Réthelyi, J.	39

Ricarte, J. J.	10
Riehle, M.	31
Riera López de Aguilera, I.	24
Rizos, E.	13
Roche, E.	20
Roesch Ely, D.	15
Romm, K. L.	26
Rössler, W.	16
Rossner, M.	19
Ruiz, A.	15, 39

S

Sabbe, B.	19
Sabherwal, S.	19
Sand, M.	13, 23
Schalbroeck, R.	17
Schall, U.	27, 33, 38
Schlagenhauf, F.	27, 31, 33
Schlier, B.	25
Schmack, K.	31
Schmidt, A.	31
Schmidt, S. J.	20
Schomerus, G.	28
Schröder, J.	26
Schultze-Lutter, F.	12, 17, 19, 20, 24
Schutte, M. J. L.	29
Schwarz, S. V.	39
Selten, J.-P.	16
Seppälä, A.	18
Seppälä, J.	18
Servaas, M.	27
Shakir, M.	32
Shamsaei, F.	14
Shoaib Ahmed, K.	26
Shuib, N.	31
Silvia, R.	26
Simkova, E.	27
Simonsen, C.	35
Sintes-Estevez, A.	19
Smelror, R. E.	38
Soldevila-Matias, P.	38
Sportel, E.	17

INDEX OF CHAIRPERSONS, AUTHORS AND PRESENTERS

Spray, A.	33
Steenhuis, L.	17
Stegmayer, K.	20, 30
Steiner, J.	11, 21, 39
Stone, J.	23
Strik, W.	22, 30
Supanya, S.	12

T

Taler, M.	13
Tenback, D.	32
Termorshuizen, F.	12
Thonon, B.	36
Tomiello, S.	37
Traber-Walker, N.	36
Turner, D.	31, 36

U

Üçok, A.	17, 30
Ullevoldsæter Lystad, J.	10
Uzbekov, M.	13

V

van Asperen, L.	26
van der Stouwe, E.	38
van der Zalm, Y.	26
van Harten, P.	11, 29, 32
Verhoeven, W. M. A.	13
Vignapiano, A.	17
Viher, P.	20
Vila-Badía, R.	15, 24
Villagran, J.	36
Völk, C.	13
Vybornykh, D.	25

W

Waite, F.	41
Walther, S.	20, 25, 29
Weber, L. A.	33
Weijers, J.	36
Wellstein, K.	15
Wheeler, A.	12
Willems, A. E.	11
Winnopal, D.	39
Witkowska-Luc, B.	36
Wölwer, W.	31
Wunderink, A.	23

Y

Yoshimura, B.	14
Yung, A.	35

Z

Zagozdzon, P.	25
Zäske, H.	14



Scientific Organizer

European Scientific Association
on Schizophrenia and other
Psychoses e.V. (ESAS)
www.esasnet.eu

Scientific Secretariat

Wolfgang Gaebel, Wolfgang Wölwer,
Viktoria Toeller
c/o Department of Psychiatry and Psychotherapy
Heinrich-Heine-University Düsseldorf

Conference Venue

Seminaris Science & Conference Center

The 'Dahlem Cube'
Takustraße 39
14195 Berlin, Germany
www.seminaris.de/hotels/
seminaris-campus-hotel-berlin.html

Professional Conference Organizer

CPO HANSER SERVICE
Hanser & Co GmbH
PO Box 12 21
22882 Barsbüttel, Germany
Phone: +49-40-670 88 20
Fax: +49-40-670 32 83
Email: schizophrenia@cpo-hanser.de