



# 2<sup>nd</sup> European Conference on Schizophrenia Research –

## From Research to Practice

Joint thematic congress of the Competence Network on Schizophrenia, the German Psychiatry and Psychotherapy Association and the European Psychiatric Association

in cooperation with



WPA World Psychiatric Association and its Section on Schizophrenia

21 – 23 September 2009

Berlin, Germany

## Final Programme

accredited by the European Council for Continuing Education (EACCME) with 18 CME credits

[www.schizophrenianet.eu](http://www.schizophrenianet.eu)

TABLE OF CONTENT

---

	Page
Welcome Address	3
Conference Organisation	4
Conference Information	5
Format Descriptions /CME Credits	8
Opening Ceremony and Welcome Reception	10
Overview Scientific Programme	11
Scientific Programme	
Monday, 21 September	14
Tuesday, 22 September	24
Wednesday, 23 September	37
Acknowledgements	50
Floorplan	50
Index Chairpersons, Authors and Presenters	52



Dear Colleagues,

On behalf of the organizers and the scientific committee I cordially welcome you to the 2<sup>nd</sup> ECSR. The 1<sup>st</sup> European Conference on Schizophrenia Research in 2007 has been a remarkable success and speakers as well as participants encouraged us to pursue our initial plans to establish this thematic conference on a biannual basis. This year's ECSR is a joint thematic conference of the German Competence Network on Schizophrenia and the German and the European Psychiatric Associations. The World Psychiatric Association and its Section on Schizophrenia are co-sponsoring this scientific event. This collaboration is reflected in the scientific program by several sessions organized by the respective associations.

The thematic concept of this year's ECSR – From research to practice – meets not only the objectives of the Competence Network Schizophrenia and its political mandate respectively but also the participants' needs documented in the comments on the evaluation sheets of last year's conference. Accordingly, the scientific program offers both research as well as clinically relevant issues. Internationally distinguished experts as well as young scientists are contributing to this conference by plenary lectures, presentations within pre-arranged or submitted symposia, workshops, and poster sessions. The amount of submitted abstracts has more than doubled compared to the initial conference in 2007 in Düsseldorf. This reflects the extensive research in this field.

Despite intensive research on schizophrenia and its etiology, its pathomechanisms, its early recognition and its optimal treatment, this severe disorder still confronts us with many open questions. The heterogeneous clinical picture of schizophrenia, the overlapping symptomatology with schizoaffective and bipolar disorders as well as the staging of the course of schizophrenia results in an extensive discussion on a revision of current diagnostic classification systems. Despite first path-breaking insights of recent pharmacogenetic studies we are still far away from individualized treatment regimens. These are just two examples of the challenges we still have to meet and which may not only require more intensive research and scientific exchange but may also require a redirection of our research strategies. Networking across borders and establishing a forum that allows for periodically updating the knowledge about schizophrenia and for discussing emerging research and clinically relevant issues may help to deal with the aforementioned problems more effectively in the future. By bringing together European schizophrenia experts and addressing researchers as well as clinicians the European Conference on Schizophrenia Research (ECSR) shall provide an important contribution to these needs and in this specific field to the European Research Area.

Thank you for being part of this scientific community by attending the ECSR 2009 and hopefully the ECSR's to come. I wish all of us an inspiring scientific conference.

*Sincerely yours,  
Wolfgang Gaebel  
congress president*

*on behalf of the scientific as well as the organizing committee*

# CONFERENCE ORGANISATION

---

## ORGANISERS



Competence Network  
on Schizophrenia



European Psychiatric Association (EPA)



German Psychiatry and Psychotherapy  
Association (DGPPN)



The conference is also  
supported by the

WPA World Psychiatric Association  
and its Section on Schizophrenia

## LOCAL ORGANISER

PsychoseNetz e.V.  
Wolfgang Gaebel, Wolfgang Wölwer,  
Viktoria Toeller  
c/o Department of Psychiatry  
and Psychotherapy  
Heinrich-Heine-University Düsseldorf  
LVR Clinic Center  
Bergische Landstraße 2  
40629 Düsseldorf, Germany

## PROFESSIONAL CONFERENCE ORGANISER

Hanser & Co GmbH  
**CPO**<sup>®</sup>**HANSER**<sup>®</sup>  
SERVICE

Postfach 12 21  
22882 Barsbüttel, Germany  
Phone: +49 – 40 – 670 88 20  
Fax: +49 – 40 – 670 32 83  
Email: [schizophrenia@cpo-hanser.de](mailto:schizophrenia@cpo-hanser.de)

## SCIENTIFIC PROGRAMME COMMITTEE

Wolfgang Gaebel, Germany  
**Congress President**

George Awad, Canada  
Finn Bengtsson, Sweden  
Dinesh Bhugra, UK  
Gerd Buchkremer, Germany  
George Christodoulou, Greece  
Peter Falkai, Germany  
Silvana Galderisi, Italy  
Wagner F. Gattaz, Brazil  
Birte Glenthoj, Denmark  
Philippe Gorwood, France  
Heinz Häfner, Germany  
Cyril Höschl, Czech Republic  
Joachim Klosterkötter, Germany  
Valery Krasnov, Russia  
Shôn Lewis, UK  
Jan Libiger, Czech Republic  
Wolfgang Maier, Germany  
Mario Maj, Italy  
Stephen Marder, USA  
Patrick McGorry, Australia  
Hans-Jürgen Möller, Germany  
Franz Müller-Spahn, Switzerland  
Merete Nordentoft, Denmark  
Jim van Os, The Netherlands  
Michael Owen, UK  
Victor Peralta, Spain  
Wulf Rössler, Switzerland  
Pedro Ruiz, USA  
Bernard Sabbe, Belgium  
Norman Sartorius, Switzerland  
Frank Schneider, Germany  
Wolfgang Wölwer, Germany  
Til Wykes, UK

### CONFERENCE VENUE

The Dahlem Cube  
Seminaris Science & Conference Center  
Takustraße 39  
14195 Berlin, Germany

### CONFERENCE REGISTRATION COUNTER

All conference material and documentation are available at the conference registration counter located in the foyer on the ground floor of the Dahlem Cube.

#### OPENING HOURS

Monday, 21 Sept. 2009	08.00 – 18.00 h
Tuesday, 22 Sept. 2009	08.00 – 18.30 h
Wednesday, 23 Sept. 2009	08.00 – 18.00 h

During these opening hours the conference counter can be reached at:  
Phone: +49 – 30 – 55 77 97 480

### REGISTRATION FEE

On-site Registration	EUR
Competence Network members and members of EPA, DGPPN, WPA	EUR 440,00
Non-members	EUR 490,00
Trainees *	EUR 390,00

\* Non-tenured junior scientists or clinical residents in training under 35 years (Trainee status must be confirmed by a certificate in writing by head of department and copy of passport).

### ON-SITE REGISTRATION

On-site registration will be processed on a first-come, first-served basis. Priority will be given to pre-registered delegates. Depending on the number of on-site registered delegates, availability of conference documentation may be limited.

### NAME BADGES

Participants are kindly requested to wear their name badge at all times during the conference including the Opening Ceremony and Welcome Reception.

### CONFERENCE LANGUAGE

The conference language is English. Simultaneous translation will not be provided.

### PROGRAMME CHANGES

The organisers cannot assume liability for any changes in the conference programme due to external or unforeseen circumstances.

### CERTIFICATE OF ATTENDANCE

A certificate of attendance will be handed out upon demand at the registration counter.

### ABSTRACT BOOK

All accepted abstracts are published in an abstract book as a supplement of the European Archives of Psychiatry and Clinical Neurosciences (EAPCN). The abstract book will be handed out together with the conference documentation at the registration counter.

### MEDIA CHECK

The Media Check is located in room Yale on the first floor of the Seminaris Science & Conference Center. Speakers are asked to hand in their CD ROM or USB stick, containing the PowerPoint presentation (IBM format or compatible, no multisession) preferably one day before their session but at the latest 90 minutes prior to the presentation. The presentation will be transferred to a special conference notebook in the hall of the presentation. Due to time and technical reasons we kindly ask the speakers not to use their own notebook.

#### OPENING HOURS

Monday, 21 Sept. 2009	08.00 – 18.00 h
Tuesday, 22 Sept. 2009	08.00 – 18.30 h
Wednesday, 23 Sept. 2009	08.00 – 17.00 h

## CONFERENCE INFORMATION

---

### POSTER EXHIBITION

The poster exhibition is located in the foyer on the ground floor of the Dahlem Cube. Posters will be changed daily and are on display for the entire day of the according poster tour. They will be sorted by topics and will be numbered within those topics. The poster exhibition is open to all registered delegates:

#### Poster Exhibition Times for P-01 to P-04

Monday, 21 Sept. 2009:	10.00 – 18.00 h
Guided Poster Tour:	13.30 – 14.30 h

#### Poster Exhibition Times for P-05 to P-07

Tuesday, 22 Sept. 2009:	09.00 – 18.00 h
Guided Poster Tour:	13.30 – 14.30 h

#### Poster Exhibition Times for P-08 to P-11

Wednesday, 23 Sept. 2009:	09.00 – 18.00 h
Guided Poster Tour: 1	13.30 – 14.30 h

Interested participants can meet the authors for discussions of their poster presentation during the time of the poster tour.

### Set-up and dismantling times for posters

Posters need to be set up and dismantled on the day of the respective poster tour within the following times:

#### Set-up:

Monday, 21 Sept. 2009:	08.00 – 10.00 h
Tuesday, 22 Sept. 2009:	08.00 – 09.00 h
Wednesday, 23 Sept. 2009:	08.00 – 09.00 h

#### Dismantling: 18.00 – 19.00 h on the day of the presentation

Posters which have not been removed within the indicated dismantling time will be disposed.

### COFFEE BREAKS

Coffee, tea and mineral water will be served free of charge to all registered delegates during the morning and afternoon coffee breaks from Monday, 21 September to Wednesday, 23 September 2009. Coffee bar stations are located on the first floor and in the foyer of the ground floor next to the poster exhibition.

### LUNCH AND RESTAURANTS

A lunch snack will be served to all registered delegates during the lunch breaks from Monday, 21 September to Wednesday, 23 September 2009 in the foyer of the ground floor next to the poster exhibition. The conference venue further provides one restaurant where lunch is available on cash basis.

### MOBILE PHONES

Participants are kindly requested to keep their mobile phones turned off while attending the scientific sessions in the meeting rooms.

### INSURANCE

The conference fee does not include insurance. All participants are advised to arrange for their own insurance. Health and accident insurance is recommended and has to be purchased in your country of residence.

### How to get to the Seminaris Campus Hotel:



#### By car:

**From the North:** A 115 southward, AS 2 Hüttenweg direction city, turn left Clayallee, right into Königin Louise-Straße, right into Takustraße / Lansstraße

**From the West:** A2/A 10/A 115 direction Potsdam/Berlin/AS 4 Zehlendorf/B1 Potsdamer Chaussee/turn left Clayallee/right Königin Louise-Straße/right into Takustraße/Lansstraße

**From the South:** via A 103/AS 5 Schlossstraße to the B1, Unter den Eichen, turn right into Fabekstraße then Lansstraße

**From the East:** via A 12/A 10/A 113 direction airport BBI (Schönefeld)/A 100/A 103/exit 5 Wolfensteindamm, turn right into Schlossstraße direction Dahlem/left into Grunewaldstraße/Königin-Luise-Straße/Lansstraße

#### Distance to the airport:

Berlin Tegel: Transfer time by taxi approximately 30 minutes depending on traffic

Berlin Schönefeld: Transfer time by taxi approximately 45 minutes depending on traffic

#### By train:

Berlin main station (ICE, IC-, RE- und RB-Station), then take the underground U3 to station "Dahlem-Dorf". Exit the station towards Königin Louise-Straße. Follow the road for 300 m until you reach the crossroad Takustraße.

#### City hotels Kurfürstendamm:

Point of departure: Heidelberger Platz

Take the underground U3 to Krumme Lanke and get off at Dahlem-Dorf towards direction Königin Louise-Straße. From here 300 m walk to the Seminaris Campushotel

#### PARKING

There is an underground car park with direct access to the Seminaris Campus Hotel. The parking fee is 2 Euros per hour and 12 Euros per night.

The scientific programme will comprise the following formats:

### PLENARY LECTURES

Invited lectures of 45 min each, covering current hot spots in schizophrenia research and given by leading European experts.

### SYMPOSIA

Pre-arranged or submitted symposia of 90 min each, including four presentations and time for discussion covering major topics of the conference. Both symposia with a clear scientific focus and those with a clear clinical focus will be included.

### WORKSHOPS

Pre-arranged workshops allowing for detailed discussion on scientific topics and on emerging issues within the revision process of current classification systems and with regard to guideline development.

### ORAL PRESENTATION SESSIONS

Submitted presentations grouped by topics into thematic oral sessions of 90 min, including six papers each.

### POSTER SESSIONS

Submitted presentations grouped by topics into thematic guided poster sessions.

### CME ACCREDITATION

The Competence Network on Schizophrenia c/o LVR Clinic Center, Department of Psychiatry and Psychotherapy, Düsseldorf University is accredited by the European Accreditation Council for Continuing Medical Education (EACCME) to provide the following CME activity for medical specialists. The EACCME is an institution of the European Union of Medical Specialists (UEMS), [www.uems.net](http://www.uems.net).

The 2nd European Conference on Schizophrenia Research – From Research to Practice is designated for a maximum of (or 'for up to') **18 hours = 18 CME credit points** of European external CME credits. Each medical specialist should claim only those hours of credit that he/she actually spent in the educational activity.

EACCME credits are recognized by the American Medical Association towards the Physician's Recognition Award (PRA). To convert AECME credit to AMA PRA category 1 credit, contact the AMA.

The Ärztekammer Berlin has granted **18 points** to the conference. The following points are given for each conference day:

21 September: 6 points

22 September: 6 points

23 September: 6 points

Participants interested in obtaining EACCME credits and CME points of the Ärztekammer Berlin (please provide your bar code) may contact the staff at the registration counter on the last day of attendance in order to receive a printed copy of their accreditation certificate.





**NEU**

## Für beide Krankheitsphasen

- ▶ neu zugelassen für die bipolare Manie und bipolare Depression

 **Seroquel Prolong®**  
Endlich wieder ich.

[www.seroquel.de](http://www.seroquel.de)

**Seroquel Prolong® 50 mg Retardtabletten Seroquel Prolong®, 200 mg Retardtabletten, Seroquel Prolong® 300 mg Retardtabletten, Seroquel Prolong® 400 mg Retardtabletten. Wirkstoff:** Quetiapinhydrofumarat. Verschreibungspflichtig. **Zusammensetzung:** 1 Retardtablette Seroquel Prolong® 50 mg enthält 50 mg Quetiapin (als Quetiapinhydrofumarat), 1 Retardtablette Seroquel Prolong® 200 mg enthält 200 mg Quetiapin (als Quetiapinhydrofumarat), 1 Retardtablette Seroquel Prolong® 300 mg enthält 300 mg Quetiapin (als Quetiapinhydrofumarat), 1 Retardtablette Seroquel Prolong® 400 mg enthält 400 mg Quetiapin (als Quetiapinhydrofumarat). Sonstige Bestandteile: Kern: Mikrokristalline Cellulose; Natriumcitrat; Lactose-Monohydrat; Magnesiumstearat (Ph. Eur.); Hypromellose. Überzug: Hypromellose; Macrogol 400; Titandioxid; Eisen(III)-oxid (50 mg, 200 mg, 300 mg Retardtabletten); Eisen(III)-hydroxid-oxid x H<sub>2</sub>O (50 mg Retardtabletten). **Anwendungsgebiete:** Seroquel Prolong® wird angewendet zur Behandlung der Schizophrenie. Bei stabilen Schizophreniepatienten, die bereits auf Seroquel Prolong® eingestellt sind, wirkt Seroquel Prolong® präventiv gegen einen Rückfall. Seroquel Prolong® wird angewendet zur Behandlung von mittelschweren bis schweren manischen Phasen im Rahmen der bipolaren Störung. Seroquel Prolong® wird angewendet zur Behandlung von schweren depressiven Episoden bei bipolaren Störungen. Seroquel Prolong® wird nicht angewendet zur Prävention von Rückfällen in manische oder depressive Phasen. **Gegenanzeigen:** Überempfindlichkeit gegen den Wirkstoff oder einen der sonstigen Bestandteile des Arzneimittels. Die gleichzeitige Verabreichung von Cytochrom-P450-3A4-Hemmern wie HIV-Protease-Hemmern, Antimykotika vom Azoltyp, Erythromycin, Clarithromycin und Nefazodon ist kontraindiziert. **Nebenwirkungen:** Geringe, dosisabhängige Senkung der Schilddrüsenhormonspiegel, insbesondere des Gesamt-T<sub>4</sub> und des freien T<sub>4</sub> mit einem Maximum in den ersten 2-4 Behandlungswochen ohne weitere Abnahme in der Langzeitbehandlung. Geringfügige Abnahme des Gesamt-T<sub>3</sub> und des umgewandelten T<sub>3</sub> wurde nur bei höheren Dosen beobachtet. Sehr häufig: Schwindel, Somnolenz, Kopfschmerzen, Mundtrockenheit, Entzündungssymptome (beim Beenden der Behandlung), Erhöhung der Serumtriglyceridspiegel, Erhöhung des Gesamtcholesterins (überwiegend LDL-Cholesterin). Häufig: Leukopenie Synkope, extrapyramidalmotorische Symptome, Tachykardie, verschwommenes Sehen, orthostatische Hypotension, Rhinitis, Obstipation, Dyspepsie, milde Asthenie, periphere Ödeme, Gewichtszunahme, Erhöhung der Serumtransaminasen (ALT, AST), Verringerung der neutrophilen Granulozyten, Anstieg der Blutzuckerspiegel auf hyperglykämische Werte. Gelegentlich: Eosinophilie, Hypersensibilität, Krampfanfälle, Restless Legs Syndrom, Dysarthrie, Dysphagie, Erhöhung der Gamma-GT-Spiegel. Selten: Gelbsucht, Priapismus, malignes neuroleptisches Syndrom. Sehr selten: Anaphylaktische Reaktionen, Diabetes mellitus, Spätdyskinesie, Hepatitis, Angioödem, Stevens-Johnson-Syndrom. Nicht bekannt: Neutropenie. **Handelsformen:** Seroquel Prolong® 50 mg / Seroquel Prolong® 200 mg / Seroquel Prolong® 300 mg / Seroquel Prolong® 400 mg Retardtabletten N1 (10 Retardtbl.), N2 (50 Retardtbl.), N3 (100 Retardtbl.); Klinikpackungen. Weitere Informationen enthält die Fach- bzw. Gebrauchsinformation bzw. sind auf Anforderung erhältlich. **AstraZeneca GmbH, 22876 Wedel • [www.astrazeneca.de](http://www.astrazeneca.de) • E-Mail: [azinfo@astrazeneca.com](mailto:azinfo@astrazeneca.com) • Stand: Dezember 2008 Servicehotline für Produktanfragen: 0800 - 22 88 660**

AZIB-SER-4923/08

## OPENING CEREMONY AND WELCOME RECEPTION

---

### Opening Ceremony

09.15 – 10.15 h

Plenary Room

#### Welcome Addresses

Professor Wolfgang Gaebel, Düsseldorf, Germany  
*Congress President, Speaker of the Competence Network Schizophrenia*

Professor Hans-Jürgen Möller, Munich, Germany  
*President of the European Psychiatric Association EPA*

Professor Frank Schneider, Aachen, Germany  
*President of the German Psychiatry and Psychotherapy Association DGPPN*

Professor Cyril Höschl, Prague, Czech Republic  
*Board Member of the European Brain Council EBC*

**"Current status and future perspectives of European Brain Research"**

**Award Ceremony of the Aretaeus-Award Winner 2009**

### Welcome Reception

18.00 – 19.00 h

Foyer

At the end of the scientific sessions participants are invited to join the Welcome Reception in the Foyer of Dahlem Cube. Finger food and drinks will be provided.

Room	Plenary	Harvard	Stanford	Princeton	Foyer
Time					
09.15 – 10.15	Opening Ceremony				Registration 08.00 – 18.00
10.15 – 11.00	PL-01 Gene-environment interaction				
11.00 – 11.30	Coffee Break				
11.30 – 13.00	S-01 What can we learn from genetic research for the treatment of schizophrenia?	S-02 From stigma research to mental health policy	S-03 Prevention of psychosis – current state and evolving strategies	S-04 Treatment of first episode psychosis: Functional outcome and relapse rate	
13.00 – 14.30	Lunch Break				13.30 – 14.30 h P-01, P-02, P-03, P-04
14.30 – 16.00	S-05 Approaches towards a re-classification of schizophrenia	S-06 Working together: Vocational recovery in early psychosis	S-07 New genetic results from the German Competence Network on Schizophrenia and beyond	S-08 The immune system's impact in pathophysiology and therapy of schizophrenia	
16.00 – 16.30	Coffee Break				
16.30 – 18.00	S-09 Neuroimaging in schizophrenia research	S-10 Addressing stigma – a quality feature for best psychiatric care	W-01 Classification of psychotic disorders: Considerations for DSM-V and ICD-11	O-01 Diagnosis and symptomatology	
18.00 – 19.00	Welcome Reception in the Foyer				

## Abbreviations

S – Symposium

O – Oral Presentation

W – Workshop

PL – Plenary

P – Guided Poster Tour

OVERVIEW – Tuesday, 22 September 2009

Room Time	Plenary	Harvard	Stanford	Princeton	Foyer
08.30 – 10.00	S-11 Early course and recognition of psychosis	S-12 Polypharmacy in schizophrenia – is there a rationale?	S-13 Schizophrenia as a disorder of default regeneration: Facts and treatment options	O-02 Neuro-psychology I	Registration 08.00 – 18.30
10.00 – 10.30	Coffee Break				
10.30 – 12.00	S-14 Current results from the European Prediction of Psychosis Study (EPOS)	S-15 European practice guidelines: Survey and implementation	S-16 Can a translational approach lead to novel diagnostic and therapeutic perspectives in schizophrenia?	O-03 Neuro-psychology II	
12.15 – 13.00	PL-02 Early recognition and early intervention				
13.00 – 14.30	Lunch Break				13.30 – 14.30 h P-05, P-06, P-07
14.30 – 16.00	S-17 Motivational loss and mood symptoms in first episode psychosis	S-18 New psycho-social treatment options in schizophrenia	S-19 Interventions in people at risk of psychosis: Recent approaches	O-04 Neuro-imaging	
16.00 – 16.30	Coffee Break				
16.30 – 18.00	S-20 First-episode schizophrenia: Early diagnosis, short- and long-term outcome	S-21 Recovery and assertive community treatment in first psychosis	S-22 Controversies about anti-psychotics: From bench to bed side	O-05 Treatment	
18.15 – 19.45	S-23 Establishing the validity of community screening to identify children displaying the antecedents of schizophrenia	S-24 Addressing the pathophysiology of hallucinations to tailor rTMS treatment	W-02 Assessment of outcome to antipsychotic therapy beyond symptom improvement	O-06 Early stages of schizophrenia	

Room	Plenary	Harvard	Stanford	Princeton	Foyer
Time					
08.30 – 10.00	<b>S-25</b> Is neurocognitive dysfunction a core feature of schizophrenia?	<b>S-26</b> Obstacles in the management of schizophrenia patients	<b>S-27</b> Neurobiology of schizophrenia and comorbid cannabis abuse	<b>S-28</b> Phenotypes and the genetics of schizophrenia	<b>Registration</b> 08.00 – 18.00
10.00 – 10.30	Coffee Break				
10.30 – 12.00	<b>S-29</b> Are there any valid neuro-functional and neurostructural endophenotypes for schizophrenia?	<b>W-03</b> Comparative effectiveness of antipsychotics in the treatment of schizophrenia: Guidelines for clinical practice	<b>S-30</b> Positive Symptoms of Psychosis: Psychological models and psychotherapeutic interventions	<b>S-31</b> What can animal models of schizophrenia tell us about basic cognition and risk-related phenotypes?	
12.15 – 13.00	<b>PL-03</b> Psychological treatments in schizophrenia				
13.00 – 14.30	Lunch Break				13.30 – 14.30 h <b>P-08, P-09, P-10, P-11</b>
14.30 – 16.00	<b>S-32</b> Large scale proteomic and gene expression studies on post-mortem brains in schizophrenia: What have we gained?	<b>S-33</b> Cognitive remediation and social functioning in schizophrenia	<b>S-34</b> Prediction of neuroleptic treatment response in schizophrenia	<b>S-35</b> Neurobiological and neuro-cognitive findings in persons at risk for psychosis	
16.00 – 16.30	Coffee Break				
16.30 – 17.00	Closing Ceremony				
17.00 – 18.30		<b>O-07</b> Comorbidity	<b>S-37</b> Learning potential and related concepts in schizophrenia: From neurobiology to clinical practice	<b>S-38</b> Cycloid psychoses: From clinical concepts to biological foundations	

PL-01	PLENARY LECTURES
10.15 – 11.00 h	Plenary Room
Gene-environment interaction	
Chair: C. Höschl, Prague, Czech Republic	

PL-01-001

Gene-environment-wide interaction studies in psychiatry  
*J. van Os, Maastricht, The Netherlands*

S-01	SYMPOSIA
11.30 – 13.00 h	Plenary Room
What can we learn from genetic research for the treatment of schizophrenia?	
Organized by the Competence Network on Schizophrenia	
Chairs: W. Maier, Bonn, Germany	
M. Owen, Cardiff, United Kingdom	

S-01-001

Recent progress in unravelling the genetic causes of schizophrenia  
*M. Owen, Cardiff, United Kingdom*

S-01-002

Pharmacogenetics of schizophrenia: Current status and future perspectives  
*M. Arranz, London, United Kingdom*

S-01-003

What can we learn from genetic research on substance abuse and schizophrenia?  
*P. Gorwood, Paris, France*

S-02	SYMPOSIA
11.30 – 13.00 h	Harvard
From stigma research to mental health policy	
Chairs: W. Gaebel, Düsseldorf, Germany	
J. Wallcraft, London, United Kingdom	

S-02-001

Good practices for combating social exclusion of people with mental health problems  
*M. van Dievel, Brussels, Belgium*

S-02-002

User involvement in mental health research  
*J. Wallcraft, London, United Kingdom*

S-02-003

Evaluation of the Time to Change Anti-stigma Programme  
*C. Henderson, London, United Kingdom*

S-02-004

The German alliance for mental health  
*H. Zäske, Düsseldorf, Germany*  
*W. Gaebel*

S-03	SYMPOSIA	S-04	SYMPOSIA
11.30 – 13.00 h	Stanford	11.30 – 13.00 h	Princeton
<b>Prevention of psychosis – current state and evolving strategies</b> <i>Chairs: S. Ruhrmann, Cologne, Germany</i> <i>G. Berger, Oetwil am See/Zürich, Switzerland</i>		<b>Treatment of first episode psychosis: Functional outcome and relapse rates</b> <i>Chairs: P. D. McGorry, Melbourne, Australia</i> <i>L. Wunderink, Leeuwarden, The Netherlands</i>	
<b>S-03-001</b> <b>Pharmacological intervention in the at-risk state for psychosis</b> <i>S. Ruhrmann, Cologne, Germany</i> <i>J. Klosterkötter, F. Schultze-Lutter</i>		<b>S-04-001</b> <b>2 year follow-up of withdrawal of antipsychotics in first episode psychosis</b> <i>M. Riesbeck, Düsseldorf, Germany</i> <i>W. Gaebel</i>	
<b>S-03-002</b> <b>Prevention of psychosis in persons with schizotypal disorders</b> <i>M. Nordentoft, Copenhagen, Denmark</i> <i>D. Nordholm, A. Thorup, P. Jeppesen</i>		<b>S-04-002</b> <b>Discontinuation challenge in remitted first episode psychosis: Functional outcome and relapse rates</b> <i>L. Wunderink, Leeuwarden, The Netherlands</i>	
<b>S-03-003</b> <b>A second generation trial in people at-risk of psychosis comparing CBT, aripiprazole and placebo</b> <i>A. Bechdolf, Cologne, Germany</i>		<b>S-04-003</b> <b>Relapse prevention in remitted first-episode psychosis patients: a double-blind randomized placebo-controlled study</b> <i>E. E. Chen, Hong Kong, People's Republic of China</i> <i>C. L. Hui, M. Lam, C. Law, C. P. Chiu, D. W. Chung, S. Tso, E. P. Pang, K. Chan, S. Hung, W. G. Honer</i>	
<b>S-03-004</b> <b>Neuroprotection in emerging psychotic disorders – an overview</b> <i>G. Berger, Oetwil am See/Zürich, Switzerland</i> <i>P. Amminger, M. Berg, L. Philips, A. Yung, P. McGorry</i>		<b>S-04-004</b> <b>Preventing the second episode: A randomized controlled trial of relapse prevention therapy versus specialized treatment for remitted first-episode psychosis patients</b> <i>M. Alvarez-Jimenez, Melbourne, Australia</i>	

**P-01 POSTER PRESENTATIONS**

13.30 – 14.30 h

Foyer

**First episode and course of schizophrenia**

*Chair: L. Wunderink, The Netherlands*

**P-01-001**

**Depression after first episode of schizophrenia**

*A. Dangelia, Tirana, Albania*

**P-01-002**

**Quality of life and depression in first-episode schizophrenic patients: An 8-year prospective follow up study. Preliminary results**

*K. Jaracz, Poznań, Poland*

*K. Gorna, J. Kiejda, B. Grabowska-Fudala, J. Rybakowski*

**P-01-003**

**Attitudes of patients with schizophrenia towards psychiatric research. Preliminary results**

*K. Jaracz, Poznań, Poland*

*K. Gorna, J. Kiejda, J. Jaracz, J. Rybakowski*

**P-01-004**

**First episode is the best episode: Lessons and limitations in duration of untreated psychosis (DUP) and outcome**

*A. Shrivastava, Ontario, Canada*

*N. Shah, M. Thakar, L. Stitt, G. Chinnasamy*

**P-01-005**

**Modelling comorbidity: Which model is best?**

*J. Zielasek, Düsseldorf, Germany*

*W. Gaebel*

**P-01-006**

**Time-course of schizophrenia in first-episode patients: A prospective follow up study. Preliminary results**

*K. Gorna, Poznań, Poland*

*K. Jaracz, J. Kiejda, B. Grabowska-Fudala, J. Rybakowski*

**P-01-007**

**Akathisia and suicidality in first episode schizophrenia (FES)**

*F. Seemüller, Munich, Germany*

*A. Mayr, R. Schennach-Wolff, M. Obermeier, H.-J. Möller, M. Riedel*

**P-01-008**

**Outcome of suicidal patients with schizophrenia: Results from a naturalistic study**

*R. Schennach-Wolff, Munich, Germany*

*M. Jäger, F. Seemüller, M. Obermeier, H.-J. Möller, M. Riedel*

**P-01-009**

**Retrospective analysis of outcome predictors for schizophrenia: A study of 65 young adults at their first psychotic episode**

*S. Ingretolli, Rome, Italy*

*P. L. Bandinelli, F. Magnani, G. Kotzalidis, S. Germanà, G. Ducci*

**P-01-010**

**6-month clinical and functional outcome in first-episode psychosis in a Spanish population**

*D. Bergé, Barcelona, Spain*

*A. Mane, P. Salgado, A. Merino, A. Bulbena*

**P-01-011**

**Psychosis reveals lymphocytic hypophysitis: A case report**

*M.-M. Theil, Braunschweig, Germany*

*C. Mayer, K.-L. Vollbrecht, K. Wessel, A. Diehl*



P-02	POSTER PRESENTATIONS
13.30 – 14.30 h	Foyer
Assessment	
Chair: J. F. P. Bridges, Baltimore, USA	

**P-02-001**

Consistency of subsyndromes of BPRS–E scale in course of schizophrenia in 12 years prospective study

A. Cichocki, Cracow, Poland

A. Cechnicki, J. Franczyk

**P-02-002**

How to handle the PANSS in statistical analyses

M. Obermeier, Munich, Germany

A. Mayr, R. Schennach-Wolff, F. Seemüller,

H.-J. Möller, M. Riedel

**P-02-003**

Construct validity of four positive and negative syndrome scale items

S. van Geert, Gent, Belgium

S. Vanheule

**P-02-004**

A structured interview guide for the Scale for Assessment of Negative Symptoms (SANS)

R. Gaur, Newark, USA

J. Schoemaker, L. Ramirez, S. DeSanti

**P-02-005**

Instrument development of medication adherence among individuals with schizophrenia based on theory of planned behavior: A preliminary report

E. Lin, Taichung County, Taiwan

A. Kopelowicz, C.-H. Chan, L.-C. Wang

**P-02-006**

A trialog of patient, relative and therapist in the assessment of psychosocial functioning in schizophrenia – the PSP Self-Rating and the PSP Relative-Rating based on the Personal and Social Performance (PSP) Scale

D. Schaub, Bochum, Germany

G. Juckel, M. Brüne

**P-02-007**

Valuing patient-relevant endpoints from the perspective of patients diagnosed with schizophrenia in Germany: A conjoint analysis

J. F. P. Bridges, Baltimore, USA

E. T. Kinter, A. Schmeding, I. Rudolph

**P-02-008**

Careless, sceptical and model patients – a latent class analysis of the Medication Adherence Rating Scale (MARS)

S. Jaeger, Ravensburg, Germany

W. Bayer, C. Pfiffner, P. Weiser, H. Wiesner,

T. Steinert

**P-02-010**

Brief versions (30 items) of Frankfurt Complaints Questionnaire in the diagnosis of psychotic disorders

M. Vargas, Zamora, Spain

N. Jimeno-Bulnes

**P-03 POSTER PRESENTATIONS**

13.30 – 14.30 h

Foyer

**Early stages of schizophrenia**

Chair: G. Berger, Oetwil am See/Zürich, Switzerland

**P-03-001**

**Association of childhood history of impulse control spectrum disorders and early onset schizophrenia**

A. Stathopoulou, Patras, Greece  
K. Karaivazoglou

**P-03-002**

**Niacin sensitivity, membrane fatty acids and phospholipase A2 activity-associations in people at risk to develop psychosis**

B. Milleit, Jena, Germany  
M. R. Schaefer, C. Milleit, M. Otto, U. C. Hipler, H. Sauer, P. Amminger, S. Smesny

**P-03-003**

**Cognitive and clinical characteristics in high-risk children for schizophrenia: comparative study among first-degree relatives**

I. Baeza, Barcelona, Spain  
E. de la Serna, S. Andrés, O. Puig, V. Sánchez-Gistau, S. Romero, J. Toro, J. Castro-Fornieles

**P-03-004**

**Relationship between clinical and neuropsychological characteristics in children and adolescents first degree relatives of subjects with schizophrenia**

E. de la Serna, Barcelona, Spain  
I. Baeza, J. Toro, V. Sanchez-Guistau, S. Romero, O. Puig, S. Andres, M. Bernardo, J. Castro-Fornieles

**P-03-005**

**Neuropsychological profile of patients in a prodromal state of psychosis**

R. Zimmermann, Basel, Switzerland  
U. Gschwandtnner, M. O. Pflueger, J. Aston, S. Borgwardt, R.-D. Stieglitz, A. Riecher-Rössler

**P-03-006**

**Facial emotion recognition and EEG in the prodromal phase of schizophrenia**

S. Stroth, Düsseldorf, Germany  
J. Brinkmeyer, M. Streit, M. List, S. Ruhrmann, M. Wagner, A. Bechdorf, W. Gaebel, W. Wölwer

**P-03-007**

**Autonomic dysfunction in unaffected first-degree relatives of patients suffering from schizophrenia**

S. Berger, Jena, Germany

**P-03-009**

**Catalan experience of an early psychosis intervention program (PAE-TPI): A descriptive study**

A. Barajas, Barcelona, Spain  
M. San Emeterio, M. Teixidó, I. Álvarez, M. A. Argany, M. Carbonero, A. Escuder, E. Sánchez, L. Lalucat

**P-03-010**

**A case report of schizophrenia debuting with criminal behavior: Insanity defense vs. incompetence to stand trial?**

G. Vyshka, Tirana, Albania  
S. Preçi, B. Ymaj

**P-04 POSTER PRESENTATIONS**

13.30 – 14.30 h

Foyer

**Symptomatology, Quality of Life**

*Chair: L. Voruganti, Canada*

**P-04-001**

**Geriatric depressive and bipolar schizo-affective disorders**

*X. Y. Baran, White Plains, USA*

*H. Moonseong, R. Young*

**P-04-002**

**Water poisoning in schizophrenic patients in conjunction with psychotic perceptions**

*S. Ler, Sarajevo, Bosnia and Herzegovina*

*G. Sulejmanpasic-Arslanagic, A. Frenjo*

**P-04-003**

**The satisfaction of clients (schizophrenic children and their parents) to Isfahan Child and Adolescents Guidance Clinic (a qualitative research)**

*M. Aminolroayaie Yamini, Isfahan, Iran*

*A. Attari, H. A. Abedi*

**P-04-004**

**Social profile and social adjustment: Important aspects of quality of life in patients with schizophrenia**

*A. K. P. M. Menezes, São Paulo, Brazil*

*M. P. Abrahão, E. S. Di Sarno, A. B. Vizzotto, I. C.*

*Napolitano, P. C. Buchain, G. R. Oliveira, H. Elkis*

**P-04-005**

**Diagnostic stability at 24 months follow-up of 80 patients with brief psychotic disorder**

*V. Sanchez-Gistau, Barcelona, Spain*

*L. Rodriguez Inicio, I. Grande, M. Bernardo,*

*E. Parellada*

**P-04-006**

**Awareness and stigmatization of schizophrenia in South Korea**

*S. Joe, Changnyung-Kun Kyungnam, Republic of Korea*

*D. Kwon, Y. Kim, S. Cho*

**P-04-007**

**Anhedonia as a prognostic symptom of schizophrenia duration**

*N. Orlova, Kiev, Ukraine*

*M. Shklier*

**P-04-008**

**Anhedonia at patients with schizophrenia: Pathogenesis mechanisms**

*N. Orlova, Kiev, Ukraine*

*G. Dzub, M. Shklier*

**P-04-009**

**The relevance of cycloid psychoses in clinical psychiatry**

*W. Verhoeven, Venray, The Netherlands*

*J. Egger*

**P-04-010**

**The evaluation of relation between schizophrenia and suicide risk in north west of Iran**

*E. Rezaei Ghalechi, Ardabil, Iran*

*F. Sadeghi Movahhed, J. Vahabzadeh Monshie*

**P-04-011**

**Fertility and schizophrenia: Clinical aspects in a women's sample in treatment in the community**

*M. Zamarro Arranz, Madrid, Spain*

*D. Crespo, R. Gutiérrez Labrador, A. Cordero*

*Villafáfila, J. Ramos*

**P-04-012**

**War and schizophrenia**

*H. Ansari, Teheran, Iran*

S-05	SYMPOSIUM
14.30 – 16.00 h	Plenary Room
<b>Approaches towards a re-classification of schizophrenia</b> Organized by the Competence Network on Schizophrenia <i>Chairs: W. Gaebel, Düsseldorf, Germany P.D. McGorry, Melbourne, Australia</i>	

**S-05-001**  
**Concepts of reclassifying psychotic disorders**  
*W. Gaebel, Düsseldorf, Germany*

**S-05-002**  
**The dimensional approach for psychotic disorders**  
*J. van Os, Maastricht, The Netherlands*

**S-05-003**  
**Deficit schizophrenia – a disorder separate from non-deficit forms of schizophrenia**  
*S. Galderisi, Naples, Italy*

**S-05-004**  
**The prodromal stage of psychosis – a separate category in the classification systems?**  
*P. D. McGorry, Melbourne, Australia*

S-06	SYMPOSIA
14.30 – 16.00 h	Harvard
<b>Working together: Vocational recovery in early psychosis</b> <i>Chairs: S. Singh, Coventry, United Kingdom J. Smith, Worcester, United Kingdom</i>	

**S-06-001**  
**IPS in early psychosis: The Australian experience**  
*E. Killackey, Melbourne, Australia*

**S-06-002**  
**IPS in early psychosis: UK studies**  
*B. Major, London, United Kingdom  
M. Hinton, A. Flint, A. Chalmers-Brown,  
K. McLoughlin, S. Johnson*

**S-06-003**  
**IPS in early psychosis: UK studies**  
*M. Rinaldi, London, United Kingdom*

**S-06-004**  
**Vocational recovery in ethnic minorities**  
*A. Lau, London, United Kingdom  
V. Sturdy, A. Black*

**S-06-005**  
**Meaningful lives: International consensus statement on vocational recovery in first episode psychosis**  
*J. Smith, Worcester, United Kingdom*

S-07	SYMPOSIA	S-08	SYMPOSIA
14.30 – 16.00 h	Stanford	14.30 – 16.00 h	Princeton
<b>New genetic results from the German Competence Network on Schizophrenia and beyond</b> <i>Chairs: W. Maier, Bonn, Germany</i> <i>D. Rujescu, Munich, Germany</i>		<b>The immune system's impact in pathophysiology and therapy of schizophrenia</b> <i>Chairs: M. J. Schwarz, Munich, Germany</i> <i>A.-M. Myint, Munich, Germany</i>	

#### S-07-001

**Progression of prodromal patients to schizophrenia**

*R. Mössner, Bonn, Germany*

#### S-07-002

**New results of genome-wide association studies in schizophrenia**

*S. Cichon, Bonn, Germany*

#### S-07-003

**New genetic strategies in schizophrenia: Focus on copy-number variants**

*D. Rujescu, Munich, Germany*

#### S-07-004

**Overlapping genetic findings in schizophrenia and bipolar disorder**

*M. Rietschel, Mannheim, Germany*

#### S-08-001

**Microglia activation and functional changes in schizophrenia: Recent findings from brain imaging**

*H. Klein, Groningen, The Netherlands*

*J. Doorduyn, R. Dierckx, E. de Vries*

#### S-08-002

**RNA signature as diagnostic markers for schizophrenia**

*H. Drexhage, Rotterdam, The Netherlands*

*R. C. Drexhage, D. Cohen, W. Nolen*

#### S-08-003

**Kynurenine metabolism in pathophysiology of schizophrenia: The link between immune-metabolic-neurochemical systems interaction**

*A.-M. Myint, Munich, Germany*

#### S-08-004

**Influencing the immune and the kynurenines systems by medication: New treatment strategies for schizophrenia**

*M. J. Schwarz, Munich, Germany*

*M. Riedel, A.-M. Myint, N. Müller*

S-09	SYMPOSIA
16.30 – 18.00 h	Plenary Room
<b>Neuroimaging in schizophrenia research</b> Organized by the Germany Psychiatry and Psychotherapy Association <i>Chairs: F. Schneider, Aachen, Germany</i> <i>P. Falkai, Göttingen, Germany</i>	

**S-09-001**  
**Subtyping schizophrenia by understanding the pathophysiologically relevant neuronal networks**  
*O. Gruber, Göttingen, Germany*

**S-09-002**  
**Emotion-Cognition interaction in the course of schizophrenia**  
*U. Habel, Aachen, Germany*

**S-09-003**  
**Neuroimaging findings of a multi-centre study on cognitive behavioral therapy in patients with schizophrenia**  
*T. Kircher, Marburg, Germany*  
*H. Walter, G. Winterer, B. Müller, J. Herrlich, G. Wiedemann, K. Vogeley, A. Wittorf, S. Klingberg, A. Krug*

**S-09-004**  
**Understanding the pathophysiology of schizophrenia hallucinations and thought disorders**  
*W. Strik, Bern, Switzerland*

S-10	SYMPOSIA
16.30 – 18.00 h	Harvard
<b>Addressing stigma – a quality feature for best psychiatric care</b> <i>Chairs: W. Rössler, Zürich, Switzerland</i> <i>L. Freimueller, Düsseldorf, Germany</i>	

**S-10-001**  
**Involvement of peer experts in mental health services – overcoming or continuation of stigmatization**  
*J. Utschakowski, Bremen, Germany*

**S-10-002**  
**Building stigma resistance in patients with schizophrenia – a strategy for individual and public health action**  
*M. Amering, Vienna, Austria*  
*I. Sibitz*

**S-10-003**  
**Antistigma-competence for mental health professionals**  
*L. Freimueller, Düsseldorf, Germany*

**S-10-004**  
**Antistigma features in community mental health settings**  
*R. Borbé, Ravensburg, Germany*

W-01	WORKSHOPS
16.30 – 18.00 h	Stanford
<b>Classification of psychotic disorders: Considerations for DSM-V and ICD-11</b> Round Table Discussion	

O-01	ORAL PRESENTATIONS
16.30 – 18.00 h	Princeton
<b>Diagnosis and symptomatology</b> <i>Chairs: A. G. Awad, Toronto, Canada</i> <i>S. Klingberg, Tübingen, Germany</i>	

**O-01-001**

**Critical use of the concept of schizophrenia**

*O. Maeser, Feldkirch, Austria*

**O-01-002**

**Schizophrenia classification: Historical heterogeneity and structural repetitions**

*K. Mc Nally, Dublin, Ireland*

**O-01-003**

**Hallucinations vs. delusions. Symptomatology may be associated with suicidality in a five year follow up, first episode psychosis sample**

*J. Evensen, Oslo, Norway*

*J. I. Røssberg, S. Friis, I. Melle*

**O-01-004**

**Clinical relevance of ego-pathology (Ich-Störungen) in psychosis: A review of literature and implications for future research**

*O. Pintsov, K. Papageorgiou, Vienna, Austria*

*R. Strobl*

**O-01-005**

**Schizophrenic illness in pregnant and postpartum women – an update**

*S. Misri, British Columbia, Canada*

**O-01-006**

**For the WPA Section „Psychoanalysis in Psychiatry”: New inquiries in the family dynamics of schizophrenic patients**

*M. Ammon, Berlin, Germany*

S-11	SYMPOSIA
08.30 – 10.00 h	Plenary Room
<b>Early course and recognition of psychosis</b> <i>Chairs: M. Wagner, Bonn, Germany</i> <i>R. K. R. Salokangas, Turku, Finland</i>	

**S-11-001**

**Perceived negative attitude of others – Early sign of psychosis**

*R. K. R. Salokangas, Turku, Finland*  
*M. Heinimaa, T. Svirskis, J. Klosterkötter, S. Ruhrmann, H. Graf von Reventlow, D. Linszen, P. Dingemans, M. Birchwood, P. Patterson*

**S-11-002**

**Cognition in the prodrome: Findings, models, and implications for clinical prediction**

*M. Wagner, Bonn, Germany*  
*I. Frommann, W. Maier, A. Bechdorf, S. Ruhrmann, R. Pukrop, J. Klosterkötter, J. Brinkmeyer, W. Wölwer, J. Gaebel, P. Decker, H. J. Möller, K. Maurer, H. Häfner*

**S-11-003**

**The ERIraos: A two-stage early recognition inventory for psychosis**

*F. Rausch, Mannheim, Germany*  
*K. Maurer, A. Bechdorf, S. Ruhrmann, F. Schultze-Lutter, M. Wagner, J. Klosterkötter, W. Maier, H. Häfner*

**S-11-004**

**The role of cognitive behavior therapy in the early course of schizophrenia – Can we do better?**

*R. Vauth, Basel, Switzerland*

S-12	SYMPOSIA
08.30 – 10.00 h	Harvard
<b>Polypharmacy in schizophrenia – is there a rationale?</b> Organized by the German Psychiatry and Psychotherapy Association and the Competence Network on Schizophrenia <i>Chairs: W. Gaebel, Düsseldorf, Germany</i> <i>M. Schmauß, Augsburg, Germany</i>	

**S-12-001**

**Simultaneous prescribing of atypical antipsychotics, conventional antipsychotics and anticholinergics – a European study and it's follow-ups**

*W. J. Broekema, Amersfoort, The Netherlands*

**S-12-002**

**Antipsychotic combinations vs. monotherapy: A metaanalysis of randomised controlled trials**

*S. Leucht, Munich, Germany*

**S-12-003**

**Risks of polypharmacy: Pharmacological interactions**

*G. Gründer, Aachen, Germany*

**S-12-004**

**The DEBIT-Trial: An intervention to reduce antipsychotic polypharmacy prescribing in adult wards**

*G. Harrison, Bristol, United Kingdom*



S-13	SYMPOSIA
08.30 – 10.00 h	Stanford
<b>Schizophrenia as a disorder of default regeneration: Facts and treatment options</b> <i>Chairs: P. Falkai, Göttingen, Germany</i> <i>W. Cahn, Utrecht, The Netherlands</i>	

#### S-13-001

**Disturbed function of NRG-1 in schizophrenia: what is the consequence for the brain?**

*I. Deakin, Oxford, United Kingdom*

#### S-13-002

**Loss of grey matter volume over time in schizophrenia: Neurodegeneration or disturbed neuroplasticity?**

*W. Cahn, Utrecht, The Netherlands*

*E. Derks, N. van Haren, H. Hulshoff Pol, R. Kahn*

#### S-13-003

**Improving neural plasticity in schizophrenia via exercise**

*F. Pajonk, Liebenburg, Germany*

#### S-13-004

**Recombinant human erythropoietin: Treatment against default regeneration in schizophrenia**

*P. Falkai, Göttingen, Germany*

O-02	ORAL PRESENTATIONS
08.30 – 10.00 h	Princeton
<b>Neuropsychology I</b> <i>Chairs: W. Wölwer, Düsseldorf, Germany</i> <i>A. A. Reichenberg, London, United Kingdom</i>	

#### O-02-001

**Social cognition in schizophrenia: Interaction with social functioning**

*M. Brüne, Bochum, Germany*

#### O-02-002

**Exaggerated self-attribution bias in an agency-judgment task in patients with schizophrenia?**

*M. Voss, Berlin, Germany*

*M. Hauser, B. Repp, J. Gallinat, G. Knoblich, A. Heinz*

#### O-02-003

**Misattribution of emotional salience to neutral faces in paranoid schizophrenia**

*E. Haralanova, Aachen, Germany*

*R. Gur, G. Gründer*

#### O-02-004

**Visuo-spatial perspective taking in schizophrenia**

*S. Landgraf, Paris, France*

*I. Amado, M.-O. Krebs, J.-P. Olié, E. van der Meer, A. Berthoz*

#### O-02-005

**Attentional modulation of external speech perception in patients with hallucinations and delusions**

*L. M. Ilankovic, Munich, Germany*

*P. Allen, R. Engel, H.-J. Möller, K. Hennig-Fast*

#### O-02-006

**Comparisational reaction time to sound and light in schizophrenic patients and normal people**

*A. Homayouni, Bandargaz, Iran*

*G. A. Nikpour, S. J. Mosavi Amiri*

S-14	SYMPOSIA
10.30 – 12.00 h	Plenary Room
<b>Current results from the European Prediction of Psychosis Study (EPOS)</b> <i>Chairs: J. Klosterkötter, Cologne, Germany</i> <i>S. Ruhrmann, Cologne, Germany</i>	

**S-14-001**

**Estimating the risk for psychosis**

*S. Ruhrmann, Cologne, Germany*  
*F. Schultze-Lutter, R. K. R. Salokangas, D. H. Linszen, M. Birchwood, G. Juckel, A. Heinz, S. Lewis, A. Morrison, J. Klosterkötter*

**S-14-002**

**Premorbid adjustment and psychosis risk in EPOS study**

*M. Heinimaa, Turku, Finland*  
*H. Jukka, T. Laine, T. Svirskis, J. Korkeila, R. K. R. Salokangas, M. Birchwood, D. Linszen, S. Ruhrmann, J. Klosterkötter*

**S-14-003**

**Axis-I diagnoses of patients at high risk of psychosis – results from the European Prediction of Psychosis Study EPOS**

*R. K. R. Salokangas, Turku, Finland*  
*T. Svirskis, M. Heinimaa, S. Ruhrmann, J. Klosterkötter, M. Birchwood, D. Linszen, H. Graf von Reventlow*

**S-14-004**

**Treatment and support provided to UHR clients across the EPOS sites and health-care systems**

*M. Birchwood, Birmingham, United Kingdom*

S-15	SYMPOSIA
10.30 – 12.00 h	Harvard
<b>European Practice Guidelines: Survey and implementation</b> Organized by the European Psychiatric Association and the Competence Network Schizophrenia <i>Chairs: H.-J. Möller, Munich, Germany</i> <i>W. Gaebel, Düsseldorf, Germany</i>	

**S-15-001**

**Inconsistencies of evidence grading in guidelines as a methodological problem**

*H.-J. Möller, Munich, Germany*

**S-15-002**

**European and international guidelines on schizophrenia – consistencies and disagreements**

*S. Weinmann, Berlin, Germany*

**S-15-003**

**European Guidance – from development to implementation**

*W. Gaebel, Düsseldorf, Germany*

**S-15-004**

**Increased metabolic and cardiovascular morbidity in patients with schizophrenia. Recommendation for diagnoses and treatment**

*M. de Hert, Kortenberg, Belgium*

S-16	SYMPOSIA
10.30 – 12.00 h	Stanford
<p><b>Can a translational approach lead to novel diagnostic and therapeutic perspectives in schizophrenia?</b></p> <p><i>Chairs: K. Q. Do, Prilly-Lausanne, Switzerland</i>  <i>P. J. Uhlhaas, Frankfurt/Main, Germany</i></p>	

#### S-16-001

##### Implication of recent findings in genetics of schizophrenia

*T. Werge, Roskilde, Denmark*

#### S-16-002

##### Disease biomarkers in first-onset schizophrenia

*S. Bahn, Cambridge, United Kingdom*

#### S-16-003

##### High-frequency gamma-band oscillations during perceptual organisation in chronic and first-episode schizophrenia patients

*P. J. Uhlhaas, Frankfurt/Main, Germany*

#### S-16-004

##### Translational approach to schizophrenia psychopathology: New susceptibility genes and treatment perspectives

*K. Q. Do, Prilly-Lausanne, Switzerland*

*P. Conus, J. H. Cabungcal, A. Frank, R. Gysin, S. Lavoie, A. Polari, P. Steullet, T. Teichmann, M. Cuenod*

O-03	ORAL PRESENTATIONS
10.30 – 12.00 h	Princeton
<p><b>Neuropsychology II</b></p> <p><i>Chairs: S. Galderisi, Naples, Italy</i>  <i>E. Joyce, London, United Kingdom</i></p>	

#### O-03-001

##### The Continuous Performance Test is not an endophenotype for schizophrenia

*A. Brand, Bremen, Germany*

*E. Chkonia, M. Roinishvili, M. H. Herzog*

#### O-03-002

##### Shared backward masking deficits in schizophrenic and bipolar patients

*M. Roinishvili, Tbilisi, Georgian*

*E. Chkonia, M. H. Herzog, A. Brand*

#### O-03-003

##### Is the magno-cellular system deficient in schizophrenic patients?

*M. Herzog, Lausanne, Switzerland*

*M. Roinishvili, E. Chkonia, C. Grimsen, A. Brand*

#### O-03-004

##### Distinct impairments of visual working memory subprocesses in early-onset schizophrenia – evidence from fMRI and EEG

*R. Bittner, Frankfurt, Germany*

*C. Haenschel, A. Roebroek, F. Haertling, A. Rotarska-Jagiela, K. Maurer, R. Goebel, W. Singer, D. Linden*

#### O-03-005

##### The first episode: Neurophysiological abnormalities overlap the markers-endophenotypes and correlate with immunological data

*I. Lebedeva, Moscow, Russia*

*V. Kaleda, A. Barkhatova, S. Golubev, T. Torochesnikova, Z. Sarmanova, I. Otman, A. Mitrophanov, T. Klushnik*

#### O-03-006

##### A comparative study of soft neurological signs in patients of schizophrenia and obsessive compulsive disorder

*N. Singla, Amritsar, India*

*P. Singh, P. D. Gargi*

**PL-02 PLENARY LECTURES**

12.15 – 13.00 h Plenary Room

**Early recognition and early intervention**

*Chair: J. Klosterkötter, Cologne, Germany*

**PL-02-001**

**Evidence and perspectives in early recognition and early intervention of psychosis**

*P. D. McGorry, Melbourne, Australia*

**P-05a POSTER PRESENTATIONS**

13.30 – 14.30 h Foyer

**Somatic treatment (clinical)**

*Chair: S. Leucht, Munich, Germany*

**P-05a-001**

**Tranquilizing activity of the norbornene series arylsulfonamides**

*H. Zlenko, Dnepropetrovsk, Ukraine*

*L. Kasyan, V. Palchikov, H. Demchenko, A. Kasyan*

**P-05a-002**

**Combining clozapine with other antipsychotics**

*N. van de Kerkhof, Venray, The Netherlands*

*F. van der Heijden, W. Verhoeven*

**P-05a-003**

**Characteristics of antipsychotic prescriptions prior to the introduction of clozapine**

*A. K. P. M. Menezes, São Paulo, Brazil*

*B. S Avrichir, H. Elkis*

**P-05a-004**

**Rehospitalization as a measure of effectiveness: Patients with schizophrenia discharged with clozapine or non clozapine antipsychotic from a university hospital**

*A. P. Werneck, Sao Paulo, Brazil*

*H. Elkis*

**P-05a-006**

**Negative symptoms and schizophrenia: Which role for the atypical antipsychotics?**

*D. Correia, Porto, Portugal*

*T. Gandra, H. Lourenço, L. Martins Correia,*

*R. Pedrosa, F. Silva*

**P-05a-007**

**Treatment of negative symptoms in schizophrenia: Alternative drugs to antipsychotics**

*F. Silva, Porto, Portugal*

*R. Pedrosa, D. Correia, T. Gandra, H. Lourenço,*

*L. Martins Correia*

**P-05a-008**

**Effectiveness of antipsychotics in ambulatory schizophrenia: Five-year retrospective cohort study**

*M. Vargas, Zamora, Spain*

*N. Asensio, S. Martin*

**P-05b POSTER PRESENTATIONS**

13.30 – 14.30 h Foyer

**Somatic treatment (clinical)**

*Chair: J. Zielasek, Düsseldorf, Germany*

**P-05b-009**

**Risperidone long-acting injection (RLAI) in the treatment of schizophrenia: 9-month preliminary results from the electronic Schizophrenia Treatment Adherence Registry (E-STAR) in Russia**

*E. Lyubov, Moscow, Russia*

*I. Y. Gurovich, K. Maslova*

**P-05b-010**

**Predictors for treatment response and use of benzodiazepines in patients with acute schizophrenia**

*C. Tessier, Issy Les Moulineaux, France*

*A. Schreiner, M. Blanc, L. Bidzan, D. Hoebe,*

*G. Badescu, C. Niolu, V. Jukic*

**P-05b-011**

**Safety, tolerability and treatment response of flexible doses of Paliperidone ER in acutely exacerbated patients with schizophrenia**

*A. Schreiner, Neuss, Germany*

*G. M. Badescu, V. Jukic, A. Siracusano, V. Maciulis, D. Hoebe, M. Schmauss*

**P-05b-012**

**A flexible-dose study of Paliperidone ER in non-acute patients with schizophrenia previously unsuccessfully treated with oral Risperidone or oral Olanzapine**

*A. Schreiner, Neuss, Germany*

*B. Millet, P. Rocca, D. Hoebe, M. V. Ivanov, M. Zink, A. Bagala, M. Kotler*

**P-05b-013**

**ECT and schizophrenia: An update**

*S. Richa, Beirut, Lebanon*

*A. Alameddine*

**P-05b-014**

**Description of the elaboration process and results of a Clinical Practice Guideline about schizophrenia and early psychosis management for the Spanish National Health System**

*M. Sanemeterio, Barcelona, Spain*

*R. Casañas Sanchez, L. Lalucat Jo, A. Parada, E. Sánchez, J. Anglés, A. Aznar, D. Bussé, M. Carbonero, M. Romero, R. Rubio*

**P-05b-015**

**Comparative study of international clinical practice guidelines about schizophrenia and early psychosis management**

*L. Lalucat-Jo, Barcelona, Spain*

*M. Carbonero, G. Faus, I. Guillamon, C. Martínez, M. Laia, M. Sanemeterio, I. Sánchez, E. Sánchez, M. Teixidó, F. Villegas*

**P-05b-016**

**Similar efficacy results in short- and long-term studies of aripiprazole in adolescents (ages 15-17) and adults with schizophrenia**

*C. Correll, Glen Oaks, USA*

*M. Nylas, C. Aurang, N. Jin, T. Iwamoto, R. Owen, J. Y. Loze, W. Carson, A. Forbes*

**P-06a**

**POSTER PRESENTATIONS**

**13.30 – 14.30 h**

**Foyer**

**Drug Treatment (basic and side effects)**

*Chair: M. Schmauß, Augsburg, Germany*

**P-06a-002**

**Neurotrophic proteins in psychotic disorders**

*N. van de Kerkhof, Venray, The Netherlands*

*D. Fekkes, W. Verhoeven, F. van der Heijden*

**P-06a-003**

**Heritable causes of drug response using the example of an extensive metabolizing Turkish migrant**

*H. Ince, Hannover, Germany*

**P-06a-004**

**Effects of selegiline on negative symptoms in schizophrenia: A double-blind, placebo-controlled, study**

*E. Abdollahian, Mashhad, Iran*

**P-06a-005**

**D2-receptor occupancies and corresponding plasma concentrations: A comparison of paliperidone extended-release (ER) with risperidone immediate-release (IR)**

*L. Hargarter, Neuss, Germany*

*S. Rossenu, E. Mannaert, A. Mehnert, A. Vermeulen*

**P-06a-006**

**Differential effects of first- and second-generation antipsychotics on energy metabolism in frontal and temporal cortex of first-episode schizophrenia patients**

*K. Langbein, Jena, Germany*

*I. Nenadic, R. Rzanny, H. Sauer, S. Smesny*

**P-06a-007**

**Metabolic side effects of "Risperidon"**

*M. Maroufi, Isfahan, Iran*

*F. Kianvash, H. Zargarzadeh, M. Sadrameli*

**P-06b POSTER PRESENTATIONS**

13.30 – 14.30 h Foyer

**Drug Treatment (basic and side effects)**

*Chair: M. Riedel, Munich, Germany*

**P-06b-008**

Metabolic changes in patients undergoing treatment with atypical antipsychotics – preliminary results from a prospective study in antipsychotic-naïve patients

*C. Opgen-Rhein, Berlin, Germany*

*T. M. Tam Ta, M. Möhlig, T. Wetter, I. Sahin,*

*L. Junqueira, H. Himmerich, M. Dettling*

**P-06b-009**

The relation between Body Mass Index (BMI) and demographic and clinical aspects among patients with schizophrenia

*G. Ahmadzadeh, Isfahan, Iran*

*A. Farhat, A. Hemat*

**P-06b-010**

Comparison of incidence of diabetes mellitus in schizophrenic patients treated with atypical or typical antipsychotics

*A. Attari, Isfahan, Iran*

*M. Amini, S. Mansoori, R. Bagherian*

**P-06b-011**

Risk of abnormal movement disorders for typical and atypical antipsychotics according to the Spanish Pharmacovigilance System database

*N. Jimeno, Valladolid, Spain*

*M. Sáinz, S. Ortega, C. Campo, I. Salado, A. Carvajal, L. Martin*

**P-06b-012**

Case series study of the effectiveness of a combination of a PDE 10 inhibitor end NMDA modulator in 6 patients with schizophrenia

*M. Yeghiyan, Yerevan, Armenia*

*G. Yeghiyan, M. Tosalakyan*

**P-06b-013**

The role of stress factors in the weight gain of the patients with schizophrenia and antipsychotic treatment

*M. Pîrlog, Craiova, Romania*

**P-06b-014**

Prevalence of metabolic syndrome in elderly schizophrenic patients in Ireland

*M. Gulzar, Castlebar, Ireland*

*A. Rafiq, M. O’Cuill*

**P-07 POSTER PRESENTATIONS**

13.30 – 14.30 h Foyer

**Psychosocial treatment, cognitive rehabilitation**

*Chair: M. van der Gaag, Den Haag, The Netherlands*

**P-07-001**

Adaptative concept of delusions – the next step for cognitive therapy of schizophrenia

*M. Jablonski, Kraków, Poland*

**P-07-002**

Evaluation of an integrated care program for severe psychiatric disorders

*O. Brotons Girona, Valencia, Spain*

*S. i. care program the Valencian group for SMD*

**P-07-003**

Treatment services for heroin users with comorbid psychosis: An essential component of an outpatient individual program for drug addiction treatment

*L. Iliopoulou, Ioannina, Greece*

*V. Koutras, E. Fidi, K. Komninou, S. Gonta, D. Lagou, V. Basogianni, S. Thomos*

**P-07-004**

A brief intervention for psychotic patients with co-occurring cannabis use: A literature review

*M. Cadranet, Poissy, France*

*S. Mille, L. Romo, C. Dubertret*

**P-07-005**

**Affect recognition impairments and violence in schizophrenia: A first application of the Training of Affect Recognition (TAR) to offenders suffering from schizophrenia**

*N. Frommann, Düsseldorf, Germany*

*M. Brandt, W. Schmidbauer, W. Woelwer*

**P-07-006**

**Remediation of odor identification deficit in schizophrenia: Creation and experimentation of an olfacto-visual tool**

*M.-L. Hamtat, Bordeaux Cedex, France*

*J. Doron, O. Grondin, G. Sicard*

**P-07-007**

**A case management program for schizophrenic patients: A one year follow-up study**

*M. Laia, Barcelona, Spain*

*L. Mauri, J. Gómez Benito, J. A. Amador Campos,*

*L. Lalucat*

**P-07-008**

**Memory improvements after cognitive remediation therapy in adolescents with schizophrenia**

*O. Puig, Barcelona, Spain*

*I. Baeza, V. Sánchez, R. Penadés, E. De la Serna,*

*L. Fonrodona, J. Castro-Fornieles*

**P-07-009**

**First results of an ongoing study in Greece. Evaluation of the effectiveness of Integrated Psychological Therapy (IPT) in a Greek population**

*S. Rakitzi, Athens, Greece*

*V. Roder, P. Georgila, S. Sanida, K. Efthimiou,*

*D. Müller*

**S-17**

**SYMPOSIA**

**14.30 – 16.00 h**

**Plenary Room**

**Motivational loss and mood symptoms in first episode psychosis**

*Chairs: I. Melle, Oslo, Norway*

*J. I. Roessberg, Oslo, Norway*

**S-17-001**

**Apathy, neurocognition and functioning in first episode psychosis**

*A. Faerden, Oslo, Norway*

*A. Finset, S. Friis, I. Melle*

**S-17-002**

**Depression and depressive symptoms in first episode psychosis**

*K. L. Romm, Oslo, Norway*

*J. I. Rossberg, A. O. Berg, E. A. Barrett, A. Faerden,*

*I. Agartz, O. Andreassen, I. Melle*

**S-17-003**

**Associations between suicidality and the course of hallucinations and delusions over the first five years**

*J. Evensen, Oslo, Norway*

**S-17-004**

**Decreased reported arousal of aversive affective stimuli in schizophrenia and bipolar disorder**

*S. Aminoff, Oslo, Norway*

*J. Jensen, T. V. Lagerberg, O. A. Andreassen,*

*I. Melle*

S-18	SYMPOSIA
14.30 – 16.00 h	Harvard
<b>New psychosocial treatment options in schizophrenia</b>	
Organized by the Competence Network on Schizophrenia	
Chairs: W. Rössler, Zürich, Switzerland	
T. Wykes, London, United Kingdom	

**S-18-001**  
**CBT for psychosis: Not a quasi-neuroleptic**  
*M. Birchwood, Birmingham, United Kingdom*

**S-18-002**  
**Targeting negative symptoms by CBT**  
*S. Klingberg, Tübingen, Germany*  
*A. Wittorf, J. Herrlich, G. Wiedemann, C. Meisner, G. Buchkremer, W. Wölwer*

**S-18-003**  
**Rehabilitation in the basic cognitive and social cognitive domain**  
*V. Roder, Bern, Switzerland*  
*D. Müller*

**S-18-004**  
**Supported Employment – a new approach in occupational rehabilitation**  
*W. Rössler, Zürich, Switzerland*

S-19	SYMPOSIA
14.30 – 16.00 h	Stanford
<b>Interventions in people at risk of psychosis: Recent approaches</b>	
Chairs: A. Bechdolf, Cologne, Germany	
P. D. McGorry, Melbourne, Australia	

**S-19-001**  
**Early detection and psychological intervention in people at-risk of psychosis: Baseline characteristics of the EDI2 trial**  
*P. French, Manchester, United Kingdom*  
*A. Morrison, R. Bentall, S. Lewis, M. Birchwood, D. Fowler, A. Gumley, P. Jones, G. Dunn, L. Davies*

**S-19-002**  
**Preventing psychosis in a help-seeking population with distressing symptoms: Preliminary results**  
*M. van der Gaag, Den Haag, The Netherlands*  
*J. Rietdijk, S. Dragt, R. Klaassen*

**S-19-003**  
**CBT in the early initial prodromal state: Results of a randomized trial**  
*A. Bechdolf, Cologne, Germany*

**S-19-004**  
**A double blind, placebo-controlled randomized trial of low-dose risperidone, cognitive-behaviour therapy, and befriending in young people with subthreshold symptoms at incipient risk of psychotic disorder**  
*P. D. McGorry, Melbourne, Australia*  
*A. Yung, B. Nelson*



O-04	ORAL PRESENTATIONS
14.30 – 16.00 h	Princeton
<b>Neuro-imaging</b> <i>Chairs: W. Cahn, Utrecht, The Netherlands</i> <i>O. Gruber, Göttingen, Germany</i>	

#### O-04-001

##### Altered default-mode network activity in schizophrenia: A resting state fMRI study

G. Mingoia, Jena, Germany

K. Langbein, S. Scherpiet, G. Wagner, R. G. M. Schlösser, C. Gaser, S. Heinrich, I. Nenadic

#### O-04-002

##### Arousal-cognition decoupling in schizophrenia: An EEG-fMRI study

J. Foucher, Strasbourg, France

D. Luck, C. Marrer, B.-T. Pham, H. Ozenberger, I. Offerlin-Meyer

#### O-04-003

##### QEEG and negative symptoms in patients with and without transition to psychosis

U. Gschwandtner, Basel, Switzerland

R. Zimmermann, M. O. Pflueger, A. Riecher-Rössler, P. Fuhr

#### O-04-004

##### A multimodal imaging study of theory of mind functioning in a Japanese sample of schizophrenia patients

K. Koelkebeck, Münster, Germany

K. Hirao, T. Saze, J. Miyata, R. Kawada, P. Ohrmann, A. Pedersen, J. Bauer, V. Arolt, T. Murai

#### O-04-005

##### Cortical gyrification in monozygotic twins discordant for schizophrenia

R. Maitra, Jena, Germany

C. Gaser, A. Mohr, C. Kaufmann, M. Knauth, H. Sauer, M. Weisbrod, I. Nenadic

#### O-04-006

##### Source-based morphometry of grey matter volume in the first-episode schizophrenia

T. Kasperek, Brno, Czech Republic

R. Marek, D. Schwarz, R. Prikryl, J. Vanicek, M. Mikl, E. Ceskova

S-20	SYMPOSIA
16.30 – 18.00 h	Plenary Room
<b>First-episode schizophrenia: Early diagnosis, short- and long-term outcome</b> <i>Chairs: H.-J. Möller, Munich, Germany</i> <i>M. Riedel, Munich, Germany</i>	

#### S-20-001

##### How can we improve the early diagnosis of psychosis?

A. Riecher-Rössler, Basel, Switzerland

#### S-20-002

##### 8-week results of the efficacy and extrapyramidal tolerability of risperidone or haloperidol in first-episode schizophrenia

M. Jäger, Guenzburg, Germany

M. Riedel, H.-J. Möller

#### S-20-003

##### Depressive symptoms and their impact on short-term outcome in first-episode schizophrenia

R. Schennach-Wolff, Munich, Germany

#### S-20-004

##### Predictors in long-term treatment of first-episode schizophrenia

W. Wölwer, Düsseldorf, Germany

M. Riesbeck, W. Gaebel, for the German Study Group on First Episode Schizophrenia

S-21	SYMPOSIA
16.30 – 18.00 h	Harvard
Recovery and assertive community treatment in first psychosis	
Chairs: B. Jacobsen, Nijmegen, The Netherlands	
H. Gijsman, Nijmegen, The Netherlands	

**S-21-001**  
**Backgrounds and theory**  
*M. Elfrink, Nijmegen, The Netherlands*

**S-21-002**  
**Medication and recovery**  
*B. Jacobsen, Nijmegen, The Netherlands*

**S-21-004**  
**Focus on surrounding people**  
*S. Gradussen, Nijmegen, The Netherlands*

S-22	SYMPOSIA
16.30 – 18.00 h	Stanford
Controversies about antipsychotics: From bench to bed side	
Chairs: J. Foucher, Strasbourg, France	
G. Stoeber, Würzburg, Germany	

**S-22-001**  
**Which brain targets for antipsychotics?**  
The issue of extrastriatal binding sites  
*G. Gründer, Aachen, Germany*

**S-22-002**  
**Long term brain plasticity related to hyper- and hypo-dopaminergic states**  
*J. Zwiller, Strasbourg, France*

**S-22-003**  
**Evidence for antipsychotic-induced super-sensitivity psychoses**  
*J. Moncrieff, London, United Kingdom*

**S-22-004**  
**Parakinesia: The psychosis related movement disorder mistaken for tardive dyskinesia – the keys for the differential diagnosis**  
*G. Stoeber, Würzburg, Germany*  
*B. Pfuhlmann*

**O-05 ORAL PRESENTATIONS**  
**16.30 – 18.00 h Princeton**

**Treatment**

*Chairs: T. Wobrock, Göttingen, Germany  
V. Roder, Bern, Switzerland*

**O-05-001**

**Early response and its predictive validity within a randomised double-blind 1 year follow-up trial**

*R. Schennach-Wolff, Munich, Germany  
M. Jäger, A. Mayr, F. Seemüller, M. Riesbeck,  
W. Wölwer, W. Gaebel, H.-J. Möller, M. Riedel*

**O-05-002**

**Hospitalization in patients with schizophrenia – which factors predict hospital readmission?**

*M. Ujeyl, Berlin, Germany  
A. Hörer, G. Glaeske, B. Häussler, H. Gothe*

**O-05-003**

**The cost-effectiveness of cognitive behavioral therapy for persistent and recurrent psychosis**

*M. van der Gaag, Den Haag, Netherlands  
D. Stant, K. Wolters, D. Wiersma*

**O-05-004**

**Does a preceding cognitive training enhance the therapeutic effects of psychoeducation in schizophrenia? – Results of the COGPIP study**

*G. Pitschel-Walz, Munich, Germany  
J. Bäuml, T. Froböse, A. Gsottschneider, T. Jahn*

**O-05-005**

**Effects of olanzapine and a typical antipsychotic drug on dimensions of schizophrenia**

*U. Barahmand, Tabriz, Iran  
M. Abbasi*

**O-05-006**

**Is clozapine cardiologically safe?**

*I. Grande, Barcelona, Spain  
A. Pons, A. Torras, I. Baeza, M. Bernardo*

**S-23 SYMPOSIA**  
**18.15 – 19.45 h Plenary Room**

**Establishing the validity of community screening to identify children displaying the antecedents of schizophrenia**

*Chairs: S. Hodgins, London, United Kingdom  
K. R. Laurens, London,  
United Kingdom*

**S-23-001**

**Children presenting putative antecedents of schizophrenia: Clinical symptoms and disorders**

*S. Hodgins, London, United Kingdom  
M. Riaz, K. R. Laurens*

**S-23-002**

**Cognitive performance of 9 to 11 year old children who present putative antecedents of schizophrenia**

*A. Cullen, London, United Kingdom  
H. Dickson, S. Hodgins, R. Morris, R. Murray,  
K. R. Laurens*

**S-23-003**

**Do children with antecedents of schizophrenia display cognitive, motor and academic deficits similar to those that have been identified in children who develop schizophrenia in adulthood?**

*H. Dickson, London, United Kingdom  
A. E. Cullen, K. R. Laurens, S. Hodgins*

**S-23-004**

**Movement abnormalities in children with putative antecedents of schizophrenia**

*D. Macmanus, London, United Kingdom  
A. E. Cullen, K. R. Laurens, S. Hodgins*

**S-23-005**

**Brain function abnormalities in 9 to 11 year old children presenting putative antecedents of schizophrenia: Evidence from event-related potential recordings**

*K. R. Laurens, London, United Kingdom  
S. Hodgins, G. Mould, R. Murray, E. Taylor*

S-24	SYMPOSIA
18.15 – 19.45 h	Harvard
<b>Addressing the pathophysiology of hallucinations to tailor rTMS treatment</b>	
<i>Chairs: J. Foucher, Strasbourg, France</i>	
<i>S. Dollfus, Caen, France</i>	

**S-24-001**  
**Functional MRI to define rTMS' targets in the case of complex multisensory hallucinations**  
*R. Jardri, Lille, France*

**S-24-003**  
**Two days treatment of auditory hallucinations by high frequency rTMS guided by cerebral imaging: a 6 months follow-up study**  
*S. Dollfus, Caen, France*  
*A. Montagne-Larmurier, O. Etard*

**S-24-004**  
**Fronto-temporal functional dysconnectivity during the course of hallucinations**  
*J. Foucher, Strasbourg, France*  
*B.-T. Pham, D. Gounot, C. Marrer, J.-M. Danion*

W-02	WORKSHOPS
18.15 – 19.45 h	Stanford
<b>Assessment of outcome to antipsychotic therapy beyond symptom improvement</b>	
<i>Chair: A. G. Awad, Toronto, Canada</i>	
<i>Presenters: A. G. Awad, Toronto, Canada</i>	
<i>L. Voruganti, Oakville, Canada</i>	

O-06	ORAL PRESENTATIONS
18.15 – 19.45 h	Princeton
<b>Early stages of schizophrenia</b>	
<i>Chairs: M. Nordentoft, Copenhagen, Denmark</i>	
<i>G. Berger, Oetwil am See/Zürich, Switzerland</i>	

**O-06-001**  
**An innovating tool for the early diagnosis of schizophrenia and other psychotic disorders**  
*H. Wilquin, Villeneuve D'ascq, France*  
*Y. Delevoye-Turrell*

**O-06-002**  
**Is there coffee in the coffee grounds? Findings at the lower end of the psychosis continuum**  
*V. Ajdacic-Gross, Zürich, Switzerland*  
*S. Vetter, M. Müller, H. Haker, W. Kawohl, W. Rössler*

**O-06-004**  
**Is alexithymia a prodromal feature of psychoses?**  
*M. Joukamaa, Tampere, Finland*  
*A. Mattila, H. Puntola, J. Miettunen, A. Taanila, I. Moilanen, H. Ebeling, M. Heinimaa, J. Veijola*

**O-06-005**  
**The phenomenology of first episode psychosis: a qualitative exploration challenging early psychosis interventions**  
*C. Tranulis, Montreal, Canada*  
*L. Park, O. Freudenreich, B. Good*

**O-06-006**  
**Working memory impairment compromises episodic memory formation in at-risk mental state individuals for psychosis**  
*M. O. Pflueger, Basel, Switzerland*  
*R. Zimmermann, U. Gschwandtner, J. Aston, S. Borgwardt, R.-D. Stieglitz, A. Riecher-Rössler*

S-25	SYMPOSIA	S-26	SYMPOSIA
08.30 – 10.00 h	Plenary Room	08.30 – 10.00 h	Harvard
<b>Is neurocognitive dysfunction a core feature of schizophrenia?</b> Organized by the Schizophrenia Section of the European Psychiatric Association <i>Chairs: S. Galderisi, Naples, Italy</i> <i>W. Gaebel, Düsseldorf, Germany</i>		<b>Obstacles in the management of schizophrenia patients</b> Organized by the Competence Network on Schizophrenia <i>Chairs: S. Hodgins, London, United Kingdom</i> <i>P. Garety, London, United Kingdom</i>	
<b>S-25-001</b> <b>Neurocognitive impairment in individuals with an at risk mental state for psychosis</b> <i>A. Riecher-Rössler, Basel, Switzerland</i>		<b>S-26-001</b> <b>Non-adherence to antipsychotic medication: Effects of integrated treatment on relapse and rehospitalisation in recent onset schizophrenia</b> <i>G. Morken, Trondheim, Norway</i>	
<b>S-25-002</b> <b>Neurocognitive impairment in first episode schizophrenia</b> <i>S. Galderisi, Naples, Italy</i>		<b>S-26-002</b> <b>Suicidality among patients with psychoses in schizophrenia spectrum</b> <i>M. Nordentoft, Copenhagen, Denmark</i>	
<b>S-25-003</b> <b>Neurocognitive impairment in schizophrenia and other psychotic disorders</b> <i>A. A. Reichenberg, London, United Kingdom</i>		<b>S-26-003</b> <b>Aggression and violent behaviour among people with schizophrenia</b> <i>S. Hodgins, London, United Kingdom</i>	
<b>S-25-004</b> <b>Neurocognitive impairment as an outcome predictor in schizophrenia</b> <i>E. Joyce, London, United Kingdom</i>		<b>S-26-004</b> <b>Physical illness and schizophrenia</b> <i>S. Leucht, Munich, Germany</i>	

S-27	SYMPOSIA
08.30 – 10.00 h	Stanford
Neurobiology of schizophrenia and co-morbid cannabis abuse	
Chairs: T. Wobrock, Göttingen, Germany	
P. Roser, Bochum, Germany	

**S-27-001**  
**Brain imaging of cannabis abusing schizophrenia patients**  
*W. Cahn, Utrecht, Netherlands*  
*M. Rais, N. van Haren, H. Hulshoff Pol, R. Kahn*

**S-27-002**  
**Event-related potentials of cannabis consumers and schizophrenia patients**  
*P. Roser, Bochum, Germany*

**S-27-003**  
**CSF parameters of cannabis abusing schizophrenia patients**  
*M. Leweke, Mannheim, Germany*

**S-27-004**  
**Schizophrenia, Cannabis and TMS – link to GABAergic deficit**  
*T. Wobrock, Göttingen, Germany*  
*A. Hasan, B. Malchow, C. Wolff-Menzler, B. Guse, T. Schneider-Axmann, P. Falkai*

S-28	SYMPOSIA
08.30 – 10.00 h	Princeton
Phenotypes and the genetics of schizophrenia	
Chairs: G. Stoeber, Würzburg, Germany	
W. Verhoeven, Venray, Netherlands	

**S-28-001**  
**Phenotypes in the 22q11 deletion syndrome and Prader-Willi syndrome**  
*W. Verhoeven, Venray, Netherlands*  
*J. Egger*

**S-28-002**  
**Cycloid psychoses: Twin and family studies**  
*B. Pfuhlmann, Würzburg, Germany*

**S-28-003**  
**Kraepelin's schizophasia revisited: Phenotypes and heredity**  
*B. Jabs, Dresden, Germany*

**S-28-004**  
**Periodic catatonia: Genome-wide association studies**  
*G. Stoeber, Würzburg, Germany*  
*D. Schanze, A. Ekici, B. Pfuhlmann, A. Reis*

S-29	SYMPOSIA
10.30 – 12.00 h	Plenary Room
<p><b>Are there any valid neurofunctional and neurostructural endophenotypes for schizophrenia?</b></p> <p>Organized by the Schizophrenia Section of the World Psychiatric Association</p> <p><i>Chairs: B. Glenthøj, Glostrup, Denmark</i>  <i>W. Cahn, The Netherlands</i></p>	

#### S-29-001

**Specific and composite endophenotypes for schizophrenia: Tools in the search for a better treatment for schizophrenia?**

*B. Glenthøj, Glostrup, Denmark*

#### S-29-002

**Is there a core in schizophrenia? Neuro-cognitive disorders and schizophrenia**

*J. Parnas, Copenhagen, Denmark*

#### S-29-003

**Are there any valid structural endophenotypes for schizophrenia?**

*W. Cahn, Utrecht, Netherlands*

*H. Boos, N. van Haren, H. Schnack, H. Hulshoff Pol, R. Kahn*

#### S-29-004

**Neurochemical endophenotype for schizophrenia**

*O. Howes, London, United Kingdom*

W-03	WORKSHOPS
10.30 – 12.00 h	Harvard
<p><b>Comparative effectiveness of antipsychotics in the treatment of schizophrenia: Guidelines for clinical practice</b></p> <p>Organised by the WPA sections on schizophrenia and pharmacopsychiatry</p> <p><i>Chairs: W. Gaebel, Düsseldorf, Germany</i>  <i>H.-J. Möller, Munich, Germany</i></p>	

**Consensus statement on the use and usefulness of second generation antipsychotic medication**

*H.-J. Möller, Munich, Germany*

**Findings from recently-concluded meta-analyses on comparative antipsychotics**

*S. Leucht, Munich, Germany*

**What do guidelines tell us about the effectiveness of antipsychotics?**

*P. Falkai, Göttingen, Germany*

**Steps towards a joint position statement by the two WPA-sections on schizophrenia and pharmacopsychiatry**

*W. Gaebel, Düsseldorf, Germany*

S-30	SYMPOSIA
10.30 – 12.00 h	Stanford
<b>Positive Symptoms of Psychosis: Psychological models and psychotherapeutic interventions</b>	
<i>Chairs: S. Klingberg, Tübingen, Germany I. Myin-Germeys, Maastricht, The Netherlands</i>	

**S-30-001**  
**Social cognitive biases, self-representations, and delusional content in psychosis**  
*S. Mehl, Bonn, Germany  
M. Landsberg, M. Wagner*

**S-30-002**  
**Fluctuations in self-esteem and paranoia in the context of daily life**  
*I. Myin-Germeys, Maastricht, The Netherlands  
V. Thewissen, R. Bentall, J. van Os*

**S-30-003**  
**Cognitive behavioural treatment of persistent positive symptoms: First results of the POSITIVE-Study**  
*S. Klingberg, Tübingen, Germany  
A. Wittorf, B. Müller, T. Kircher, H. H. König, G. Sartory, M. Wagner, G. Wiedemann, C. Meisner, W. Wölwer, G. Buchkremer*

**S-30-004**  
**Improving social recovery in psychosis using CBT: The ISREP trial**  
*D. Fowler, Norwich, United Kingdom*

S-31	SYMPOSIA
10.30 – 12.00 h	Princeton
<b>What can animal models of schizophrenia tell us about basic cognition and risk-related phenotypes?</b>	
<i>Chairs: A. Schmitt, Göttingen, Germany R. Wolf, Bochum, Germany</i>	

**S-31-001**  
**Schizophrenia-related alterations in a pharmacological animal model using NMDA receptor antagonism**  
*D. Rujescu, Munich, Germany  
J. Genius, A. Hartmann, H.-J. Möller*

**S-31-002**  
**Effects of excitotoxic lesion of the ventral thalamus on sensorimotor gating in pubertal and adult rats**  
*R. Wolf, Bochum, Germany*

**S-31-003**  
**Perinatal hypoxia as probable environmental animal model of obstetric complications in schizophrenia**  
*A. Schmitt, Göttingen, Germany  
M. Fendt, P. Gebicke-Haerter, U. Sommer, P. Falkai*

**S-31-004**  
**Schizophrenia-related behavioral changes in G72/G30 transgenic mice**  
*D.-M. Otte, Bonn, Germany*



PL-03	PLENARY LECTURES
12.15 – 13.00 h	Plenary Room
Psychological treatments in schizophrenia	
Chair: H.-J. Möller, Munich, Germany	

#### PL-03-001

#### Psychological treatments in schizophrenia: Current evidence and future perspectives

P. Garety, London, United Kingdom

P-08a	POSTER PRESENTATIONS
13.30 – 14.30 h	Foyer
Neuropsychology	
Chair: W. Wölwer, Düsseldorf, Germany	

#### P-08a-001

#### Task performance of schizophrenia patients on working memory components

P. Quee, Groningen, The Netherlands

P. Eling, F. Heijden, van der, H. Hildebrandt

#### P-08a-002

#### Neuropsychological performance in elderly patients with schizophrenia: A comparative study with Alzheimer's disease

N. Pujol, Barcelona, Spain

R. Penadés

#### P-08a-003

#### Association of deficits in smell identification and basic cognition in patients with schizophrenia, their first-degree relatives and matched healthy controls

N. Mossaheb, Vienna, Austria

M. Schloegelhofer, R. M. Kaufmann, T. Anilkumparambil, A. Gold, C. Himmelbauer, S. Inreiter, L. Schlehaider, H. N. Aschauer

#### P-08a-004

#### Sex-related differences in smell identification in patients with schizophrenia, their first-degree relatives and matched healthy controls

M. Schloegelhofer, Vienna, Austria

N. Mossaheb, R. M. Kaufmann, T. Anilkumparambil, A. Gold, C. Himmelbauer, S. Inreiter, L. Schlehaider, H. N. Aschauer

#### P-08a-005

#### Counterfactual cognitive deficits in schizophrenic patients: Preliminary results

F. Contreras, Llabregat, Spain

B. Benejam, A. Caño

#### P-08a-006

#### A longitudinal study of empathic abilities in schizophrenia and healthy controls

H. Haker, Zurich, Switzerland

S. Jann, J. Schimansky, W. Rössler

#### P-08a-008

#### Theory of mind and sense of agency in schizophrenia

J. Schimansky, Zurich, Switzerland

#### P-08a-010

#### Suicidality connected with mentalizing anomalies in schizophrenia: A study with stabilized outpatients

R. Duñó, Sabadell, Spain

E. Pousa, M. Miguélez, I. Montalvo, N. Benito, D. Suárez, A. Tobeña

#### P-08a-011

#### Cognitive insight and mental-state reasoning in patients with paranoid schizophrenia

A. Lehmann, Berlin, Germany

J. Gallinat, C. Montag

**P-08b POSTER PRESENTATIONS**

13.30 – 14.30 h Foyer

**Neuropsychology**

*Chair: M. Wagner, Bonn, Germany*

**P-08b-012**

**The possible role of post-movement cortical motor processing in self-disturbances**

*U. Thiemann, Heidelberg, Germany*

*F. Resch, M. Weisbrod, S. Bender*

**P-08b-013**

**Dissecting early bottom-up and top-down dysfunction during visual attention in schizophrenia**

*A. Neuhaus, Berlin, Germany*

*E. Hahn, C. Opgen-Rhein, C. Urbanek, T. M. Tam Ta, M. Gross, M. Dettling*

**P-08b-014**

**Attention Network Test (ANT) reveals gender-specific alterations of executive function in schizophrenia**

*C. Urbanek, Berlin, Germany*

*A. Neuhaus, C. Opgen-Rhein, R. Schaub, E. Hahn, T.-M.-Tam Ta, M. Dettling*

**P-08b-015**

**Anterior shift of maximal global field power in depressed first episode schizophrenia during an auditory oddball paradigm**

*S. Bègré, Berne, Switzerland*

*H. Kleinlogel*

**P-08b-016**

**N100 deflection and N100/P200 ratio as response to non-target stimuli during an auditory oddball paradigm are positively related to psychopathology in recent onset schizophrenia**

*S. Bègré, Berne, Switzerland*

*H. Kleinlogel*

**P-08b-017**

**Functional significance and clinical value of the P2 component of the ERP. Preliminary results of a study on patients with schizophrenia**

*F. R. Santos, Porto, Portugal*

*P. Almeida, J. B. Vieira, M. Machado, C. Silveira, F. Barbosa, J. Marques-Teixeira*

**P-08b-018**

**Repeatability of auditory processing deficits in young adults with first episode psychosis – preliminary results**

*S. Kaprinis, Thessaloniki, Greece*

*V. Iliadou, K. Apalla, D. Kandyliis, G. Kaprinis*

**P-08b-019**

**Deficient prepulse inhibition and attention-task performance in remitted schizophrenia patients and their unaffected siblings**

*S. Giakoumaki, Heraklion Crete, Greece*

*P. Roussos, A. Vardiampasis, Z. Fousteri, P. Bit-sios*

**P-08b-020**

**QEEG spectral power density changes in the early course of schizophrenia**

*M. O. Pflueger, Basel, Switzerland*

*U. Gschwandtner, R. Zimmermann, A. Riecher-Rössler, P. Fuhr*

**P-08b-021**

**Mental retardation and schizophrenia**

*M. T. Pinto Neves, Barreiro, Portugal*

*G. M. Marcelino da Ponte*

**P-09 POSTER PRESENTATIONS**

13.30 – 14.30

Foyer

**Neuroimaging**

*Chair: W. Strik, Bern, Switzerland*

**P-09-001**

**Interaction of Dopamin and Glutamate: In vivo evidence for dysfunctions in schizophrenia during reward processing**

*J. Gallinat, Berlin, Germany*

*A. Heinz, F. Schubert*

**P-09-002**

**Hippocampus dysfunction, deficient memory encoding, and positive symptoms in schizophrenia**

*K. Zierhut, Magdeburg, Germany*

*B. Bogerts, B. Schott, M. Walter, D. Albrecht,*

*E. Düzel, K. Schiltz*

**P-09-003**

**Increased and decreased fractional anisotropy in schizophrenia: A study with DTI and tract-based spatial statistics**

*K. Koch, Jena, Germany*

*G. Wagner, R. Dahnke, C. Schachtzabel, C. Schultz, M. Axer, M. Röbel, D. Güllmar, J. Reichenbach, H. Sauer, R. Schlösser*

**P-09-004**

**Psychopathological correlates of the entorhinal cortical shape in schizophrenia**

*C. Schultz, Jena, Germany*

*K. Koch, G. Wagner, M. Roebel, I. Nenadic, C. Schachtzabel, C. Albrecht, J. Reichenbach, H. Sauer, R. G. Schlösser*

**P-09-005**

**Associations of psychopathology with phospholipid and high-energy metabolism in unmedicated first-episode schizophrenia patients**

*K. Langbein, Jena, Germany*

*I. Nenadic, R. Rzanny, H. Sauer, S. Smesny*

**P-09-006**

**Asymmetry of language activation in families with multiple incidences of schizophrenia**

*J. Cermak, Prague, Czech Republic*

*F. Spaniel, J. Tintera, P. Mohr*

**P-09-007**

**Dopamine effects on reversal learning in unmedicated schizophrenia patients**

*F. Schlagenhauf, Berlin, Germany*

*A. Beck, Q. Huys, M. Rapp, B. Schott, J. Wrase,*

*J. Gallinat, A. Heinz*

**P-10 POSTER PRESENTATIONS**

13.30 – 14.30 h

Foyer

**Neurobiology**

*Chair: O. Howes, London, United Kingdom*

**P-10-001**

**Disturbed skin barrier function in schizophrenia: Reconsidering the link between mental illness and skin physiology**

*B. Milleit, Jena, Germany*

*C. Schmelzer, A. Hinder, A. Köhler, C. Schneider, M. Rudzok, U. Cyriax, R. Neubert, J. Fluhr, H. Sauer, S. Smesny*

**P-10-002**

**TH-1/TH-2 cytokine imbalance more pronounced in neuroleptic-naïve first episode schizophrenia**

*B. Milleit, Jena, Germany*

*C. Milleit, U. C. Hipler, D. Neuhaus, K. Roediger, H. Sauer, S. Smesny*

**P-10-003**

**Niacin skin flush response in schizophrenia linked to soluble interleukin 2 receptor serum levels**

*B. Milleit, Jena, Germany*

*C. Milleit, U. C. Hipler, D. Neuhaus, K. Roediger, M. Rudzok, U. Cyriax, A. Köhler, C. Schneider, H. Sauer, S. Smesny*

**P-10-004**

**Albumin binding sites in first-episode drug-naïve patients with paranoid schizophrenia studied by subnanosecond fluorescence spectroscopy**

*N. Smolina, Moscow, Russia*

*Y. Gryzunov, T. Syreishchikova, M. Uzbekov, G. Dobretsov, E. Misionzhnik, A. Komar, V. Tokarev*

**P-10-005**

**Biochemical changes in first-episode drug-naïve schizophrenic patients**

*M. Uzbekov, Moscow, Russia*

*M. Uzbekov, E. Misionzhnik, I. Gurovich, A. Shmukler, Y. Gryzunov, V. Tokarev*

**P-10-006**

**The link between Hyperhomocysteinemia and psychotic disorders in childhood and adolescents**

*S. Purvina, Riga, Latvia*

*L. Kever, D. Bauze, M. Zeibarts, A. Rizevs, M. Caune, I. Purvins, R. Andrezina*

**P-10-007**

**Emerging roles of prohibitin in schizophrenia: Evidence from human postmortem studies and a rat model of psychosis**

*H.-G. Bernstein, Magdeburg, Germany*

*K.-H. Smalla, M. Mikhaylova, J. Salin, B. Bogerts, A. Schmitt, R. Van der Schors, G. Smit, K. W. Li, D. Duerschmidt, E. D. Gundelfinger*

**P-10-008**

**Prevention of MPTP (N-metil-1-4-phenil-1,2,3,6-tetrahydropyridine) neurotoxic dopaminergical effect in rats' brain using preparation containing antioxidant effects**

*G. Kazaryan, Yerevan, Armenia*

**P-10-009**

**Cardio-respiratory coupling indicates suppression of vagal activity in acute schizophrenia**

*S. Berger, Jena, Germany*

*J. Peupelmann, C. T. Ramachandraiah, V. K. Yerragani, H. Sauer, K. J. Bär*

**P-10-010**

**An OCD patient presenting with a cerebellum venous variant in a family with a strong schizophrenia loading**

*N. Borja Santos, Amadora, Portugal*

*B. Trancas, A. Luengo, C. Vieira, J. Ribeiro, J. Ramos, M. Martins, A. Neto, G. Cardoso*

**P-11**

**POSTER PRESENTATIONS**

**13.30 – 14.30 h**

**Foyer**

**Genetics**

*Chair: D. Rujescu, Munich, Germany*

**P-11-001**

**Impact of the AHI1 gene on the vulnerability to schizophrenia: a case-control association study**

*O. Rivero, Burjassot, Spain*

*A. Reif, C. Nájera, T. Töpner, J. Sanjuan, K.-P. Lesch*

**P-11-002**

**A2 risk allele of Interleukin-1beta modifies both grey and white matter in temporal lobe in schizophrenia**

*R. Maitra, Jena, Germany*

*R. Schloesser, A. Rosa, S. Papiol, C. Gaser, C. Schachtzabel, J. R. Reichenbach, H. Sauer, L. Fananas, I. Nenadic*

**P-11-003**

**The influence of genetic variants of the CHRNA7 gene on backward masking in schizophrenic patients**

*G. Bakanidze, Berlin, Germany*

*I. Puls, A. Brand, M. Herzog, M. Roinishvili, E. Chkonia*

**P-11-004**

**Functional neuroanatomy of set-shifting is differentially associated with Val108/158Met genotypes in schizophrenic patients and healthy controls**

*P. Ohrmann, Münster, Germany*

*K. Domschke, A. Wilmsmeier, J. Bauer, C. Hohoff, H. Kugel, T. Suslow, V. Arolt, A. Pedersen*

**P-11-005**

**Association of HTR2C but not leptin gene with antipsychotic-induced weight gain in a German sample**

*C. Opgen-Rhein, Berlin, Germany*

*E.-J. Brandl, D. Mueller, A. Tiwari, T. Sander, M. Dettling*

**P-11-006**

**Homer and Postsynaptic Density: A putative target of antipsychotic treatment or a possible molecular marker of antipsychotic response?**

*F. Marmo, Naples, Italy*

*C. Tomasetti, F. Iasevoli, C. Sarappa, E. Buonaguro, S. Giordano, G. Muscettola, A. de Bartolomeis*

**P-11-007**

**Analysis of BDNF Val66Met allele-specific mRNA levels in schizophrenia**

*V. de Luca, Toronto, Canada*

*R. de Souza, F. Panariello, C. Zai, T. Talerico, J. Kennedy, A. Wong*

**P-11-008**

**Association of VAL66met polymorphism of the brain-derived neurotrophic factor and serum BDNF in a sample of first psychotic episode patients**

*E. Rizos, Athens-Haidari, Greece*

*N. Siafakas, N. Stefanis, A. Douzenis, I. Rontos, E. Laskos, A. Kastania, V. Zoumbourlis, A. Giarika, L. Lykouras*

**P-11-009**

**Association between the gamma-aminobutyric acid type B receptor 1 (GABBR1) gene and schizophrenia**

*P. Manikantan, Coimbatore, India*

*K. Sasikala, V. Balachandar, B. Lakshman Kumar, S. Mohanadevi*

**P-11-010**

**Chronic and regional-specific changes in the expression of NR2A and NR2B NMDA receptor subunits in a neurodevelopmental animal model for cognitive dysfunction in schizophrenia**

*L. V. Kristiansen, Copenhagen, Denmark*

*T. Secher, V. Berezin, E. Bock, B. Pakkenberg*

**P-11-011**

**Characterization of the D-amino acid oxidase (DAO) interactome**

*M. Popiolek, Monmouth Junction, USA*

**P-11-012**

**In search of schizophrenia manifestation causes: Genetic polymorphism of mother and child**

*I. M. Halayenka, Belarus*

*V. G. Objedkov, O.-D. Levdansky, E. A. Aksyónova, M. G. Siniauskaya, N. G. Danilenko*

S-32	SYMPOSIA
14.30 – 16.00 h	Plenary Room
Large scale proteomic and gene expression studies on post-mortem brains in schizophrenia: What have we gained? <i>Chairs: P. Falkai, Göttingen, Germany W. Maier, Bonn, Germany</i>	

**S-32-001**  
The contribution of a transcriptome analysis of five CNS diseases towards the study of neurodegeneration and schizophrenia  
*P. Durrenberger, London, United Kingdom  
S. Fernando, S. Kashefi, I. Ferrer, D. Seilhean, A. Schmitt, P. Gebicke-Haerter, E. Grünblatt, T. Arzberger, D. Dexter, R. Reynolds*

**S-32-002**  
Differential expression of subsets of genes in schizophrenia using genome-wide microarrays  
*A. Schmitt, Göttingen, Germany  
P. Gebicke-Haerter, P. Durrenberger, R. Reynolds, P. Falkai*

**S-32-003**  
Biomarkers for the early diagnosis of schizophrenia  
*S. Bahn, Cambridge, United Kingdom*

**S-32-004**  
Shotgun proteomics: What does it tell us about schizophrenia?  
*D. Martins-de-Souza, Munich, Germany  
W. F. Gattaz, A. Schmitt, S. Marangoni, J. C. Novello, G. Maccarrone, C. W. Turck, E. Dias-Neto*

S-33	SYMPOSIA
14.30 – 16.00 h	Harvard
Cognitive remediation and social functioning in schizophrenia <i>Chairs: W. Wölwer, Düsseldorf, Germany V. Roder, Bern, Switzerland</i>	

**S-33-001**  
Social cognition as a possible mediator between neuro-cognition and social functioning  
*V. Roder, Bern, Switzerland  
S. Schmidt*

**S-33-002**  
Does remediation of basic cognitive impairments improve social functioning?  
*T. Wykes, London, United Kingdom*

**S-33-003**  
Does remediation of social cognitive impairments improve social functioning?  
*W. Wölwer, Düsseldorf, Germany  
N. Frommann*

**S-33-004**  
Integrating cognitive remediation and other interventions to improve social functioning  
*R. Penadés, Barcelona, Spain*

S-34	SYMPOSIA
14.30 – 16.00 h	Stanford
Prediction of neuroleptic treatment response in schizophrenia <i>Chairs: O. Gruber, Göttingen, Germany W. Gaebel, Düsseldorf, Germany</i>	

**S-34-001**  
New concepts for predicting the outcome in neuroleptic treatment  
*W. Gaebel, Düsseldorf, Germany*

**S-34-002**

**Prediction of symptom remission in schizophrenia during inpatient treatment**

*H.-J. Möller, Munich, Germany*

**S-34-003**

**Neurofunctional phenotypes for the prediction of neuroleptic treatment response**

*O. Gruber, Göttingen, Germany*

**S-34-004**

**Genetic prediction of neuroleptic-response**

*R. Mössner, Bonn, Germany*

**S-35 SYMPOSIA**

**14.30 – 16.00 h Princeton**

**Neurobiological and neurocognitive findings in persons at risk for psychosis**

*Chairs: A. Riecher-Rössler, Basel, Switzerland  
S. Ruhrmann, Cologne, Germany*

**S-35-001**

**Elevated striatal dopamine function linked to prodromal signs of schizophrenia?**

*O. Howes, London, United Kingdom*

**S-35-002**

**EEG abnormalities in persons clinically at risk for psychosis**

*A. Brockhaus-Dumke, Cologne, Germany  
M. Bodatsch, R. Müller, F. Schultze-Lutter,  
J. Klosterkötter, S. Ruhrmann*

**S-35-003**

**Neurocognitive indicators for conversion to psychosis**

*R. Pukrop, Cologne, Germany*

**S-35-004**

**Brain structural and functional correlates of the 'at-risk mental state'**

*S. Borgwardt, Basel, Switzerland  
R. Smieskova, J. Aston, U. Gschwandtner,  
M. Pflueger, E.-W. Radue, A. Riecher-Rössler*

**CM CONGRESS MEETINGS**

**16.30 – 17.00 h Plenary Room**

**Closing Ceremony**

**O-07 ORAL PRESENTATIONS**

**17.00 – 18.30 h Harvard**

**Comorbidity**

*Chairs: W. Maier, Bonn, Germany  
J. Zielasek, Düsseldorf, Germany*

**O-07-001**

**Effect of a preventive weight-management program in schizophrenic patients treated with Olanzapine (formerly S-36-003)**

*J. Cordes, Düsseldorf, Germany*

**O-07-002**

**Cannabis and psychosis: The role of neurotrophic factors BDNF and NGF**

*V. Ricci, Rome, Italy  
F. Angelucci, P. Bria, C. Caltagirone*

**O-07-003**

**Schizophrenia and substance abuse: A specific treatment proposal**

*A. Catalan, Bilbao, Spain  
M. González-Torres, S. Bustamante, A. Madrazo, L. Pérez*

**O-07-004**

**Concomitant lifetime disorders in two psychosis syndromes**

*V. Ajdacic-Gross, Zürich, Switzerland  
J. Angst, A. Gamma, W. Rössler*

**O-07-005**

**Self rated psychotic symptoms in depressed inpatients – a valid source of information?**

*F. Seemüller, Munich, Germany  
H.-J. Möller, M. Obermeier, A. Mayr, R. Schen-nach-Wolff, M. Riedel*

**O-07-006**

**Influence of stigmatization and self-stigmatization of schizophrenic on their socially dangerous behavior**

*G. Bogojevic, Belgrade, Serbia  
L. Zivavac*

S-37	SYMPOSIA
17.00 – 18.30 h	Stanford
Learning potential and related concepts in schizophrenia: From neurobiology to clinical practice	
Chairs: K. H. Wiedl, Osnabrück, Germany	
P. Ohrmann, Münster, Germany	

S-37-001

Learning potential in the WCST: Can we describe learner types by their pattern of errors?

M. Waldorf, Osnabrück, Germany  
K. H. Wiedl

S-37-002

Neurobiological correlates of learning potential in schizophrenia

A. Pedersen, Münster, Germany  
A. Wilmsmeier, J. Bauer, K. Koelkebeck, A. Siegmund, T. Suslow, K. H. Wiedl, V. Arolt, P. Ohrmann

S-37-004

Possible psychological treatments based on learning and cognition

V. Roder, Bern, Switzerland

S-38	SYMPOSIA
17.00 – 18.30 h	Princeton
Cycloid psychoses: From clinical concepts to biological foundations	
Chairs: B. Pfulmann, Würzburg, Germany	
F. van der Heijden, Venray, The Netherlands	

S-38-001

Cycloid psychosis in ICD and DSM: A naturalistic study

F. van der Heijden, Venray, The Netherlands  
W. Verhoeven

S-38-002

Cycloid psychoses: Clinical and genetic aspects

G. Stoeber, Würzburg, Germany  
B. Jabs, B. Pfulmann

S-38-003

Outcome in a 10-year follow-up study on cycloid psychosis

B. Pfulmann, Würzburg, Germany

S-38-004

Neuroimaging in cycloid psychoses

J. Foucher, Strasbourg, France



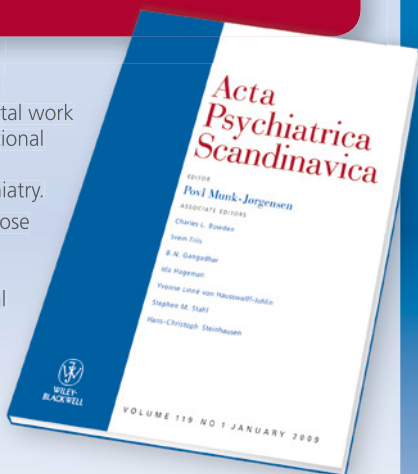
# Submit Online Today!

## Acta Psychiatrica Scandinavica

Contains high-quality scientific articles in English, representing clinical and experimental work in psychiatry. The journal acts as an international forum for the dissemination of information advancing the science and practice of psychiatry.

Original articles are welcomed, especially those that bring new knowledge or extend the present understanding of treatment. Equal priority is given to review articles and clinical overview articles.

Recent prominent authors include Hagop Akiskal, Jules Angst, Tom G. Bolwig, Peter Buckley, S. Nassir Ghaemi, Anthony Jorm, Gin S. Malhi, Gordon Parker, Stefan Priebe, Stephen M. Stahl, David Taylor, Jim van Os, Euard Vieta, Peter Weiden and Mary Zanarini.



### Topics covered in recent papers include:

- Treatment and other aspects of depression and subthreshold depression
- Treatment and other aspects of schizophrenia
- Physical illness and weight gain in psychiatric diseases
- Cognitive functioning and treatment in bipolar and other disorders
- Childhood trauma in development of psychosis
- Substance use disorders in psychiatric diseases
- Cannabis in the development of psychosis

To submit your next paper to  
*Acta Psychiatrica Scandinavica*, visit:

<http://mc.manuscriptcentral.com/actapsych>

For author guidelines and further information  
visit: [www.actapsychiatria.com](http://www.actapsychiatria.com)

### Author Benefits:

- **Quick and easy online submission** - via Manuscript Central
- **Advanced article tracking** - from submission through to acceptance and publication with Author Services
- **Fast publication times** - articles are available online weeks ahead of print publication
- **Online Open** - authors of articles in this journal can now choose to make their articles open access and available free for all readers through the payment of an author fee.

# ACKNOWLEDGEMENTS

## ACKNOWLEDGMENTS

The organisers of the 2nd European Conference on Schizophrenia Research gratefully acknowledge the support of the following companies:

AstraZeneca

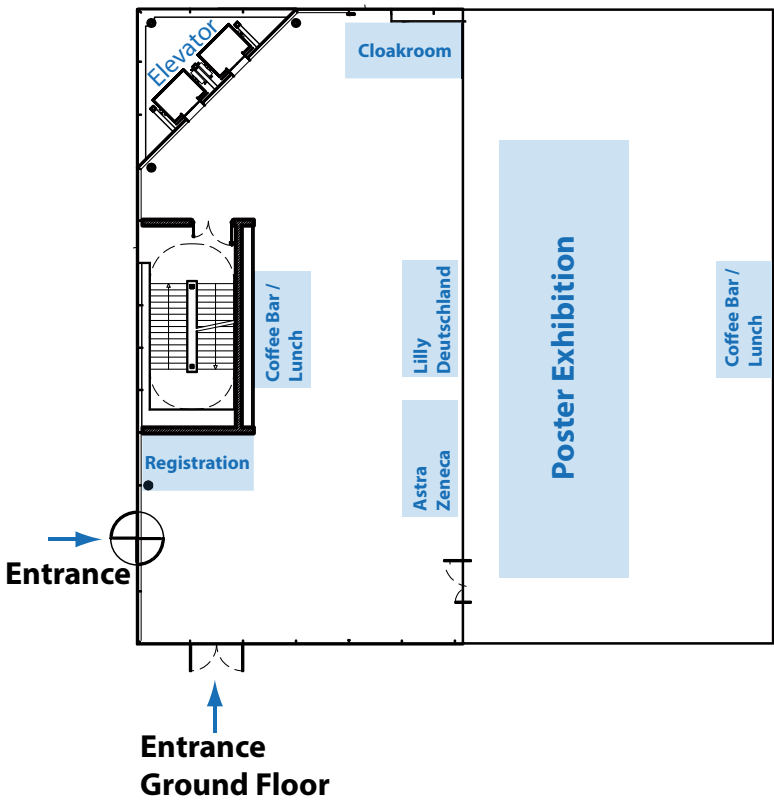
AstraZeneca

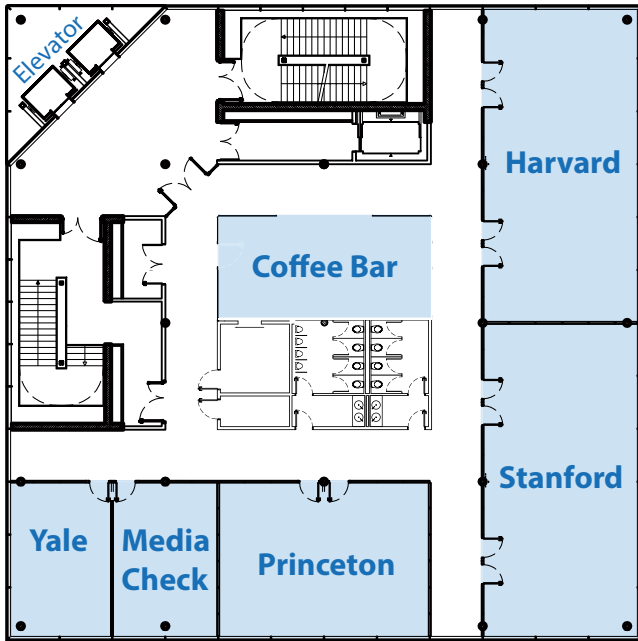


Lilly Deutschland GmbH

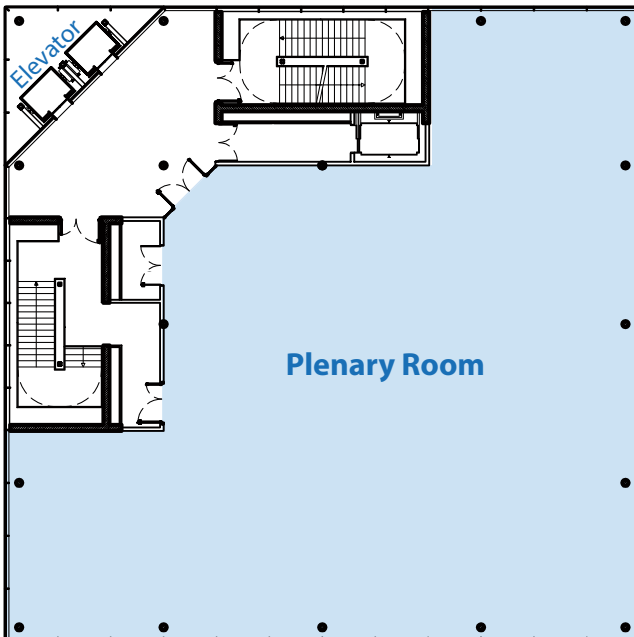


# FLOORPLAN





**First Floor**



**Second Floor**

## INDEX OF CHAIRPERSONS, AUTHORS AND PRESENTERS

### A

Abdollahian, E. ....	29
Ahmadzadeh, G. ....	30
Ajdacic-Gross, V. ....	36, 47
Alvarez-Jimenez, M. ....	15
Amering, M. ....	22
Aminoff, S. ....	31
Aminolroayaie Yamini, M. ....	19
Ammon, M. ....	23
Ansari, H. ....	19
Arranz, M. ....	14
Attari, A. ....	30
Awad, A. G. ....	23, 36

### B

Baeza, I. ....	18
Bahn, S. ....	27, 46
Bakanidze, G. ....	44
Barahmand, U. ....	35
Barajas, A. ....	18
Baran, X. Y. ....	19
Bechdorf, A. ....	15, 32
Begré, S. ....	42
Bergé, D. ....	16
Berger, G. ....	15, 18, 36
Berger, S. ....	18, 44
Bernstein, H.-G. ....	44
Birchwood, M. ....	26, 32
Bittner, R. ....	27
Bogojevic, G. ....	47
Borbé, R. ....	22
Borgwardt, S. ....	47
Borja Santos, N. ....	44
Brand, A. ....	27
Bridges, J. F. P. ....	17
Brockhaus-Dumke, A. ....	47
Broekema, W. J. ....	24
Brotos Girona, O. ....	30
Brüne, M. ....	25

### C

Cadranel, M. ....	30
Cahn, W. ....	25, 33, 38, 39
Casañas Sanchez, R. ....	29
Catalan, A. ....	47
Cermak, J. ....	43
Chen, E. E. ....	15
Cichocki, A. ....	17
Cichon, S. ....	21
Contreras, F. ....	41
Cordes, J. ....	47
Correia, D. ....	28
Correll, C. ....	29
Cullen, A. ....	35

### D

Dangellia, A. ....	16
Dickson, H. ....	35
Dievel, M. van ....	14
Do, K. Q. ....	27
Dollfus, S. ....	36
Drexhage, H. ....	21
Duñó, R. ....	41
Durrenberger, P. ....	46

### E

Ehrenreich, H. ....	25
Elfrink, M. ....	34
Evensen, J. ....	23, 31

### F

Faerden, A. ....	31
Falkai, P. ....	22, 25, 39, 46
Foucher, J. ....	33, 34, 36, 48
Fowler, D. ....	40
Freimueller, L. ....	22
French, P. ....	32
Frommann, N. ....	31

### G

Gaag, M. van der ....	30, 32, 35
Gaebel, W. ....	14, 15, 20, 24, 26, 37, 39, 47
Galderisi, S. ....	20, 27, 37
Gallinat, J. ....	43
Garety, P. ....	37, 41
Gaur, R. ....	17
Geert, S. van ....	17
Giakoumaki, S. ....	42
Gijsman, H. ....	34
Glenthøj, B. ....	39
Gorna, K. ....	16
Gorwood, P. ....	14
Gradussen, S. ....	34
Grande, I. ....	35
Gruber, O. ....	22, 33, 47
Gründer, G. ....	24, 34
Gschwandtner, U. ....	33
Gulzar, M. ....	30
Gurovich, I. Y. ....	28

### H

Habel, U. ....	22
Haker, H. ....	41
Halayenka, I. M. ....	45
Hamtat, M.-L. ....	31
Haralanova, E. ....	25
Hargarter, L. ....	29
Harrison, G. ....	24
Hauser, M. ....	25
Heinimaa, M. ....	26

Heijden, F. van der .....	48
Henderson, C.....	14
Hert, M. de.....	26
Herzog, M.....	27
Hodgins, S.....	35, 37
Homayouni, A.....	25
Höschl, C.....	14
Howes, O.....	39, 43, 47

## I

Ilankovic, L. M.....	25
Iliadou, V.....	42
Iliopoulou, L.....	30
Ince, H.....	29
Ingretoili, S.....	16

## J

Jablonski, M.....	30
Jabs, B.....	38
Jacobsen, B.....	34
Jaeger, S.....	17
Jäger, M.....	33
Jaracz, K.....	16
Jardri, R.....	36
Jimeno, N.....	30
Joe, S.....	19
Joukamaa, M.....	36
Joyce, E.....	27, 37

## K

Kaprinis, S.....	42
Kasperek, T.....	33
Kazaryan, G.....	44
Kerkhof, N. van de .....	28, 29
Killackey, E.....	20
Kircher, T.....	22
Klein, H.....	21
Klingberg, S.....	23, 32, 40
Klosterkötter, J.....	26, 28
Koch, K.....	43
Koelkebeck, K.....	33
Kristiansen, L. V.....	45

## L

Laia, M.....	31
Lalucat-Jo, L.....	29
Landgraf, S.....	25
Langbein, K.....	29, 43
Lau, A.....	20
Laurens, K. R.....	35
Lebedeva, I.....	27
Lehmann, A.....	41
Ler, S.....	19
Leucht, S.....	24, 28, 37, 39
Leweke, M.....	38
Lin, E.....	17

Luca, V. de.....	45
Lyubov, E.....	28

## M

Maeser, O.....	23
Maier, W.....	14, 21, 46, 47
Maitra, R.....	33, 44
Major, B.....	20
Mane, A.....	16
Manikantan, P.....	45
Marmo, F.....	45
Maroufi, M.....	29
Martins-de-Souza, D.....	46
McGorry, P. D.....	15, 20, 28, 32
Mc Nally, K.....	23
Mehl, S.....	40
Melle, I.....	31
Menezes, A. K. P. M. ....	19, 28
Milleit, B.....	18, 43
Mingoia, G.....	33
Misri, S.....	23
Möller, H.-J.....	26, 33, 39, 41, 47
Moncrieff, J.....	34
Morken, G.....	37
Mossaheb, N.....	41
Mössner, R.....	21, 47
Myin-Germeyns, I.....	40
Myint, A.-M.....	21

## N

Neuhaus, A.....	42
Nordentoft, M.....	15, 36, 37

## O

Obermeier, M.....	17
Ohrmann, P.....	44, 48
Opgen-Rhein, C.....	30, 45
Orlova, N.....	19
Os, J. van.....	14, 20
Otte, D.-M.....	40
Owen, M.....	14

## P

Pajonk, F.....	25
Papageorgiou, K.....	23
Parnas, J.....	39
Pedersen, A.....	48
Penadés, R.....	46
Pflueger, M. O.....	36, 42
Pfuhmann, B.....	38, 48
Pinto Neves, M. T.....	42
Pintsov, O.....	23
Pirlog, M.....	30
Pitschel-Walz, G.....	35
Popiolek, M.....	45

# INDEX OF CHAIRPERSONS, AUTHORS AND PRESENTERS

Puig, O. ....	31
Pujol, N. ....	41
Pukrop, R. ....	47
Purvina, S. ....	44

## Q

Quee, P. ....	41
---------------	----

## R

Rakitz, S. ....	31
Rausch, F. ....	24
Reichenberg, A. A. ....	25, 37
Rezaei Ghalechi, E. ....	19
Ricci, V. ....	47
Richa, S. ....	29
Riecher-Rössler, A. ....	33, 37, 47
Riedel, M. ....	30, 33
Riesbeck, M. ....	15
Rietschel, M. ....	21
Rinaldi, M. ....	20
Rivero, O. ....	44
Rizos, E. ....	45
Roder, V. ....	32, 35, 46, 48
Roessberg, J. I. ....	31
Roinishvili, M. ....	27
Romm, K. L. ....	31
Roser, P. ....	38
Rössler, W. ....	22, 32
Ruhrmann, S. ....	15, 26, 47
Rujescu, D. ....	21, 40, 44

## S

Salokangas, R. K. R. ....	24, 26
Sanchez-Gistau, V. ....	19
Sanemeterio, M. ....	29
Santos, F. R. ....	42
Schaub, D. ....	17
Schennach-Wolff, R. ....	16, 33, 35
Schimansky, J. ....	41
Schlagenhauf, F. ....	43
Schlögelhofer, M. ....	41
Schmauß, M. ....	24, 29
Schmitt, A. ....	40, 46
Schneider, F. ....	22
Schreiner, A. ....	29
Schultz, C. ....	43
Schwarz, M. J. ....	21
Seemüller, F. ....	16, 47
Serna, E. de la ....	18
Shrivastava, A. ....	16
Silva, F. ....	28
Singh, S. ....	20
Singla, N. ....	27
Smith, J. ....	20
Smolina, N. ....	44

Stathopoulou, A. ....	18
Stoeber, G. ....	34, 38, 48
Strik, W. ....	22, 43
Stroth, S. ....	18
Sulejmanpasic-Arslanagic, G. ....	19
Svirskis, T. ....	26

## T

Tessier, C. ....	28
Theil, M.-M. ....	16
Thiemann, U. ....	42
Tranulis, C. ....	36

## U

Uhlhaas, P. J. ....	27
Ujeyl, M. ....	35
Urbanek, C. ....	42
Utschakowski, J. ....	22
Uzbekov, M. ....	44

## V

Vargas, M. ....	17, 28
Vauth, R. ....	24
Verhoeven, W. ....	19, 38
Voruganti, L. ....	19, 36
Voss, M. ....	25
Vyshka, G. ....	18

## W

Wagner, M. ....	24, 42
Waldorf, M. ....	48
Wallcraft, J. ....	14
Weinmann, S. ....	26
Werge, T. ....	27
Werneck, A. P. ....	28
Wiedl, K.H. ....	48
Wilquin, H. ....	36
Wobrock, T. ....	35, 38
Wolf, R. ....	40
Wölwer, W. ....	25, 33, 41, 46
Wunderink, L. ....	15, 16
Wykes, T. ....	32, 46

## Y

Yeghyan, M. ....	30
------------------	----

## Z

Zamarro Arranz, M. ....	19
Zäske, H. ....	14
Zielasek, J. ....	16, 28, 47
Zierhut, K. ....	43
Zimmermann, R. ....	18
Zlenko, H. ....	28
Zwiller, J. ....	34



German Association for Psychiatry and Psychotherapy

# DGPPN CONGRESS 2009

with DGPPN Academy for Continuing Medical Education



**25 – 28 November 2009 // ICC Berlin, Germany**

## **Psychiatric Disorders through Lifespan**

More than 500 sessions

Educational symposia

More than 30 CME credits achievable

Special sessions for students

DGPPN Congress Kindergarten

Free for new DGPPN members 2009

[www.dgppn-congress.de](http://www.dgppn-congress.de)



World Psychiatric  
Association WPA



European Psychiatric  
Association EPA



*Improve the Quality of Psychiatric Research & Treatment in Europe*

# 18<sup>th</sup> EUROPEAN CONGRESS OF PSYCHIATRY

FEBRUARY 27 – MARCH 2, 2010 | MUNICH, GERMANY



Abstract  
Submission  
Deadline:  
November 18,  
2009

[www.kenes.com/epa](http://www.kenes.com/epa)

The 18th EPA European Congress of Psychiatry, under the motto **“Improve the Quality of Psychiatric Research & Treatment in Europe,”** brings together a blend of psychiatrists from all specialties in different psychiatry and neuropsychiatry fields.

## **EPA Munich 2010 Core Symposia:**

- Neurobiology of Human Sexuality, Chaired by R. Balon, USA
- Diagnosis and Treatment of Sub-threshold Conditions in Europe, Chaired by M. Maj, Italy
- Psychotherapy in European Psychiatry, Chaired by U. Schnyder, Switzerland
- Psychosomatics and Liaison Psychiatry in Europe, Chaired by A. Diefenbacher, Germany
- Translating Research Findings into Clinical Practice, Chaired by S. Kasper, Austria
- Brain Imaging Research, Recent Findings of the Brain Imaging Research in Europe, Chaired by A. Meyer-Lindenberg, Germany
- Mild Cognitive Impairment (MCI) and Dementia in Europe, Chaired by N. Sartorius, Switzerland

---

## **Congress Secretariat EPA 2010 c/o Kenes International**

1-3 Rue de Chantepoulet, PO Box 1726, CH-1211, Geneva 1, Switzerland  
Tel: + 41 22 908 0488, Fax: + 41 22 906 9140, E-mail: [epa@kenes.com](mailto:epa@kenes.com)